

[Home](#) / [Products](#) / [Orthodontics](#) / [i-GEL Phosphoric Acid Etching Gel](#)

i-GEL Phosphoric Acid Etching Gel

I-DENTAL

1. P.D.
21. P.D.



PRODUCT DETAILS

Overview

i-GEL Phosphoric Acid Etching Gel

- For etching teeth and preparing surfaces
- Advantages:
 - Thixotropic
 - Optimum level of viscosity
 - 37% phosphoric acid
- Available in:
 - 4 x 4.3gm syringe + 5 tips
 - 50gm syringe + 20 tips

Pradžia » Produktai » Ėsdinimo medžiagos » i-GEL N

i-GEL N

Fosforo rūgšties ėsdinimo gelis ir skystis, 37% fosforo rūgštis



PASKIRTIS

- Danties paviršiaus ėsdinimui



PRIVALUMAI

- Pasižymi optimaliu takumu
- 37% fosforo rūgštis
- Pašalina lipnųjį sluoksnį ir atveria dentino tubules



PAKUOTĖ

REF	SUDĖTIS
GELIS:	
IGECP	4,3g švirkštas, 5 antgaliukai
IGEK1	4x4,3g švirkštai, 10 antgaliukų
IGET2B	12g švirkštas, 10 antgaliukų
IGES0B	42g švirkštas, 2x4,3g švirkštai, 20 antgaliukų
SKYSTIS:	
IGEGL	5ml buteliukas
IGEGC	10ml buteliukas

PREPARATION OF WORKING MODELS

ALABASTER

EN ISO 6873

Colour:	grey-white
Mixing ratio:	55 ml water / 100 g powder
Working time:	ca. 3-4 minutes
Setting time:	ca. 8 minutes
Setting expansion	0.20 %
Compressive strength:	12 MPa after 1 h
Hardness:	12 MPa after 24 h

A general purpose dental plaster for investing prosthesis into the flask before polymerization.

REF 6624 sack 25 kg



ARTICULATOR ARTI-LITE II

- adjustable
- inclination of Condil way 35°C
- Benet angle 0°-20°
- weight 540 g



REF 81030.2

ADDITION

REF 81035	mounting plate
REF 81065	plastic loadstar - Calotte
REF 81070	magnet Splitcast system, á 2 pcs
REF 81062	matrix Splitcast system
REF 81060	adapter
REF 81059	socle for biting spoon

FACEBOW

- facebow complete
- registration
- facebow bag

REF 81057



OCCLUDATORS

REF 3401	occludator small
REF 3402	occludator large

4. P.D. 24. P.D.





PRODUCTS

BECOME A RESELLER

MEDICAL PROFESSIONALS

ABOUT US

CONTACT



5. P.D.
25. P.D.



[← BACK TO CUPS](#)

TOP CUPS PP | 3,000 CARTON | 200 ML

 Viola

TOP CUPS PP are the cups to get, if you like a **modern looking practice**.

The Cup is made of food safe **polypropylene (PP)** and is 100% recyclable.

The smooth yet very resistant material guarantees a **good grip** and **optimal stability**.

TOP CUPS come in 17 different colors and are **color-intensive** and **shiny**.

TOP CUPS fit all **standardized cup dispensers**.

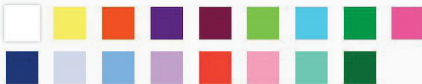
Burns without residue.



SIZE

200 ml

COLORS



CONSUMABLE UNITS

100 Pieces | Tube; 30 Tubes | Carton

SALES UNITS

Carton

CERTIFICATES



CUPDP14-AKZ-MC-L01	200	Dark Blue	3,000	38 x 38 x 51.5	8.5	6	4	24	80 x 120 x 221	228
CUPDP14-AKZ-TB-L01	200	Aqua Blue	3,000	38 x 38 x 51.5	8.5	6	4	24	80 x 120 x 221	228
CUPDP14-AKZ-MB-L01	200	Med Blue	3,000	38 x 38 x 51.5	8.5	6	4	24	80 x 120 x 221	228
CUPDP14-AKZ-RE-L01	200	Red	3,000	38 x 38 x 51.5	8.5	6	4	24	80 x 120 x 221	228
CUPDP14-AKZ-PI-L01	200	Pink	3,000	38 x 38 x 51.5	8.5	6	4	24	80 x 120 x 221	228
CUPDP14-AKZ-EG-L01	200	Mint Green	3,000	38 x 38 x 51.5	8.5	6	4	24	80 x 120 x 221	228
CUPDP14-AKZ-DG-L01	200	Dark Green	3,000	38 x 38 x 51.5	8.5	6	4	24	80 x 120 x 221	228
CUPDP14-AKZ-X3-L01	200	Mixed	3,000	38 x 38 x 51.5	8.5	6	4	24	80 x 120 x 221	228

ARE YOU A DENTIST?