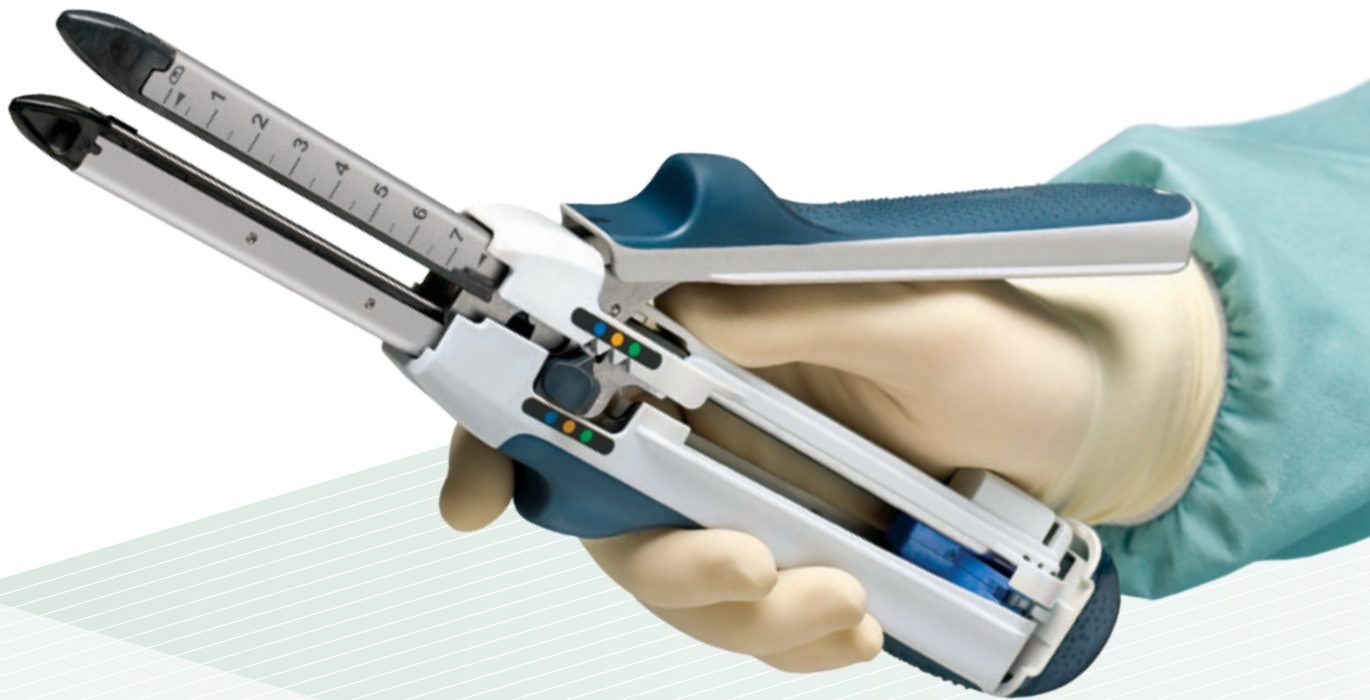


Linear Cutter

Ethicon Linear Cutter

Developed in collaboration with surgeons worldwide to deliver superior hemostasis.*



Advancing Open Surgery, Together

Focusing on the Patient

As a surgeon, you are most concerned with delivering optimal outcomes for your patients. To assist you in achieving this goal, Ethicon remains committed to developing advanced instrumentation across the spectrum of surgical methods, including open surgery. And so, in collaboration with surgeons worldwide, we have developed the Ethicon Linear Cutter to deliver superior hemostasis.*

Maintaining respect for tissue

Respect for tissue is at the heart of everything we do at Ethicon. In the 19th century, Dr. William Halsted defined a set of interrelated principles for safe and effective surgery. He stressed the importance of hemostasis, adequate blood supply, and the gentle handling of tissue. It is these principles that help drive our approach to developing advanced surgical devices.

The Ethicon Linear Cutter demonstrates these principles with several engineering breakthroughs. The Ethicon Linear Cutter is the only open linear cutter with innovative 6-row, 3-D surgical staple technology. This optimizes tissue compression and provides superior hemostasis.* Selectable Staple Height on the device gives you the versatility to deliver appropriate compression for the targeted tissue, without the need for different cartridge sizes. And the intermediate locking mechanism allows for easier, one-handed tissue manipulation, helping you to gently interact with tissue.



Engineered to Deliver Superior Hemostasis*

Innovative 6-row, 3-D surgical staple technology



3-D staple, side view



3-D staple, top view



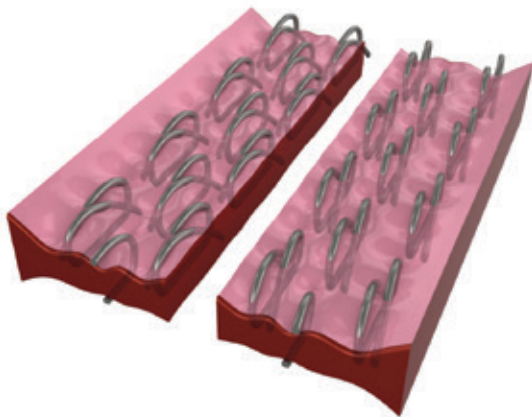
Traditional staple, side view



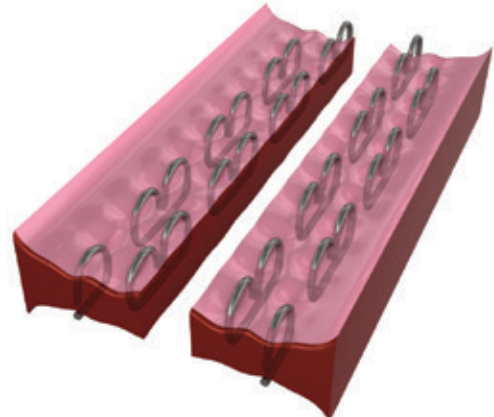
Traditional staple, top view

The 3-D staple is designed with angled, parallel staple legs, which increase the area of compressed tissue.

Tissue Compression: 3-D vs Traditional Staple Lines



Innovative 6-row, 3-D staple line

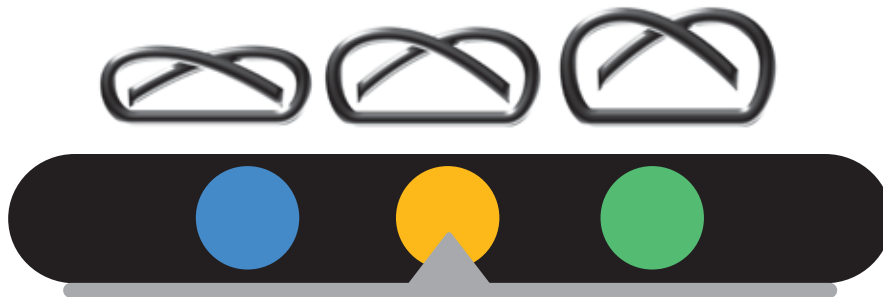


Traditional 4-row staple line

The Ethicon Linear Cutter (NTLC55 & NTLC75) with innovative 3D staple technology is designed to produce more uniform tissue compression than B-Form staples and to deliver superior hemostasis.*

Focusing on Each Individual Patient

Expanded versatility with Selectable Staple Height



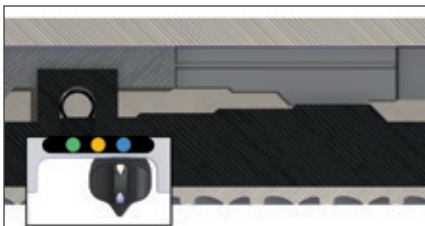
Each patient is different, and Selectable Staple Height gives you the flexibility to address these differences.

- Treatment can be individualized as needed during a procedure
- You have the ability to choose the appropriate closed staple height for the tissue conditions you encounter

Selectable Staple Height also gives you the efficiency of 3 closed staple heights in one cartridge.

- No need for separate blue, gold, and green cartridges
- You can remain focused on what is best for the individual patient
- 50% reduction in SKUs** simplifies ordering and stocking

Selectable Staple Height is achieved through the ability to change the gap between the cartridge and anvil pockets using the staple height selector.



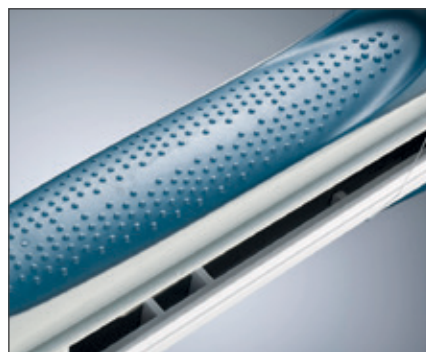
Changing the staple height selector setting moves the anvil up or down. As a result, the gap between the cartridge and anvil pockets gets smaller or larger, affecting the closed staple height.

The gap setting pad helps maintain a uniform gap between the anvil and cartridge from the proximal end to the distal tip, ensuring a consistent closed staple height throughout the staple line.



Greater Control in your Hand

- Improved, spring-loaded, intermediate locking mechanism gives you easier, one-handed tissue manipulation
- Two-sided firing allows firing at any angle, whether left- or right-handed
- Non-slip grip provides improved control of the device





**Contact your Ethicon Sales Professional to learn more
about our commitment to responsible tissue management
and for a product demonstration.**

* Assessment based on visual inspection of vessels after transection in an animate porcine model compared to the AutoSuture DST Series GIA (GIA8038S) and Frankenmann Chex Linear Cutter (LC80B).

** Compared with the leading competitor.

Please always refer to the Instructions for Use / Package Insert that come with the device for the most current and complete instructions.

Ethicon Endo-Surgery (Europe) GmbH
Hummelsbütteler Steindamm 71
22851 Norderstedt, Germany

www.ethicon.com

ETHICON
PART OF THE *Johnson & Johnson* FAMILY OF COMPANIES

Shaping
the future
of surgery

©2016 Ethicon Endo-Surgery (Europe) GmbH. 047079-160209 EMEA