



Mureva, Thalassa

Surface mounted boxes for rough
and damp environments



Catalogue | 01/2016

schneider-electric.com

Life Is On

Schneider
Electric™





Mureva & Thalassa boxes: easy to choose, easy to install

Sometimes you need electricity where it is quite difficult to install it, like in wet or dusty places, or where electricity has not been planned at all.

The Mureva & Thalassa boxes satisfy any high safety requirement that the business might have, all surface mounted installations can be made irrespective of environment or safety needs. The boxes can be installed in residential, tertiary or industrial environments.

They are easy to install, they are stable, they are halogen-free and self extinguishing. You can equip them according to your specific needs or buy them as complete junction boxes. With Mureva & Thalassa at hand, no job will be too demanding!



Wide

choice of sizes and
uses, wide range
of accessories,
Eco-designed,



► Wherever security and tightness are required



Safety
Class II
**double
isolation**



Watertightness
IP55 - IP66



Robustness
IK07 - IK08



Environment
"Eco-designed"

Check the Product Environmental Profile (PEP) on
www.schneider-electric.com

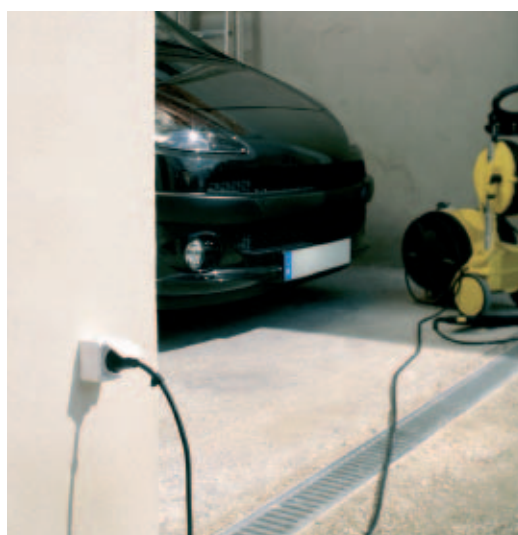
IP55/66 - for rough and damp environments

Every rough environment presents an obvious risk that electric installations become exposed to water or dust. The Mureva & Thalassa ranges of Schneider Electric offer a wide range of possibilities to provide safe installations in rough environments. The ease and fast time of installation bring to these ranges their most important advantage.



Where to install

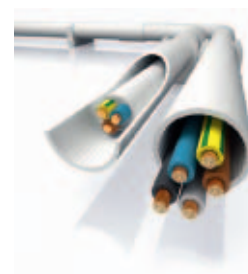
All the environments, indoors as well as outdoors, exposed to water and dust like industry, farms, parking facilities home and professional laundries...



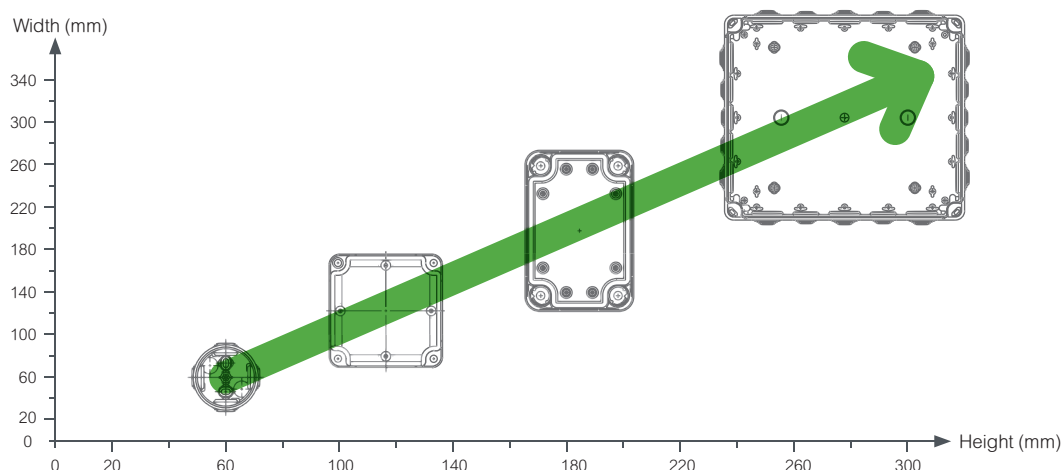
+ If you want to continue saving time in your installation you must use the Mureva GT conduits

All our Mureva GT conduits are equipped with longitudinal grooves which offer much less frictional resistance than conventional conduits. Studies have shown that the cable installation time can be reduced by up to **55%** and installation efforts by up to **60%**. Try it out – you can really feel the difference!

Mureva & Thalassa, easy to choose, easy to use



► There are inevitably a size that suits you





Mureva boxes: easy to choose, easy to Install

The Mureva range of surface-mounted boxes is wide and feature-rich. Specifically designed for components requiring sturdiness and watertightness, they are best installed in the tertiary and residential sectors.

The various ways in which they can be mounted and connected make them indispensable for exposed installations. Sealed entries, oblong holes, junction boxes (terminal blocks), reinforced fire-resistant models... a wide variety of possibilities and facilities await you.

These boxes are part of an even wider range of reinforced IP and IK wiring equipment: flush-mounted boxes, switches and power sockets, conduits, enclosures, etc.



Wide

choice of sizes and uses, wide range of accessories, Eco-designed,

► Your choice of dimensions



► Your choice of waterproof junction boxes



Boxes with grommets for direct entry



Boxes without entries

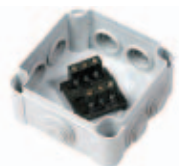


Boxes with knock-outs

► Specific applications



Security boxes 960°C



Boxes pre-equipped with terminal blocks



Safety
Glow wire test:
**650 to
960°C**



Safety
Class II:
**double
isolation**



Watertightness
IP55

IP55 protection – for rough and damp environments

Mureva boxes have been developed in a spirit of safety and respect for the planet. Halogen-free, they give off far fewer dangerous combustion gases. And by their very nature, they are less polluting.



Where to install

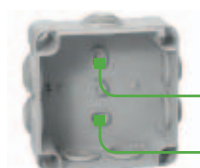
All the environments, indoors as well as outdoors, exposed to water and dust like Industry, farms, parking facilities ...



◀ An easy installation



With a threaded plug



Oblong holes

Central stud

With a standard screw + plug



With a gas or powder nailer.



Outside the waterproof space

- Through the chimneys
- Using fixing lugs.

◀ Exclusive



Two universal fixings:

- for mesh trays
- for cable trays and IPN profiles.

◀ An easy cable entry



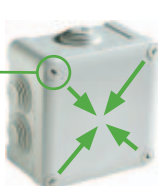
System of grommets with direct entry

- Conduits entry after removing a step
- Direct cable entry by pushing.

◀ An easy closing



1/4-turn screws



- Captive screws
- Closing visually identifiable, the arrow of the screw pointing towards the center of the box.

Clipped cover



- Waterproofness assured by the double lips
- Tool necessary to open the box.



Check the Product Environmental Profile (PEP) on www.schneider-electric.com

Thalassa boxes: robustness and safety

Thalassa boxes are the answer to the continuous evolution of the industry. They have been designed to withstand the toughest environmental conditions. Its rounded shape avoids any kind of water and dust accumulation. They are easy to install and machine. The Thalassa boxes meet all the international certifications according to IEC62208 standard. Class II: double insulation. Insulating material, self extinguishing and halogen free.

- ABS & polycarbonate versions.
- Faces lines (without grommets).

► This range can be configured according to your needs



Machining

- Make square and circle cut-outs before painting the enclosure (body, cable gland plate, sides) and mounting plates

- + Ensures safety and the best protection against rust
- + The enclosure is ready to be equipped



Mounting of standard accessories

- Pre-installation of accessories inside or out-side of the enclosure (ex.: mounting plate, plinth, canopy, etc.)

- + Enclosure ready to be equipped



Painting

- Change the colour of the complete enclosure (choice of 36 colours)
- Modify the coating of the raw material (ex.: zinc, etc.)

- + Industrial painting ensures the best protection
- + Totally customized



Packaging

- Just ask how many Thalassa products you want in each chipping box

► Insulating industrial boxes



- ABS for conventional applications (IK07) with the usual constraints,
- polycarbonate for enhanced impact resistance (IK08) and for outdoor applications or applications directly exposed to UV,
- polycarbonate certified UL.

► Smart



- Fixing studs on the cover.
- specific: transparent cover.

Watertightness – IP66 for all ranges

Thalassa is not only specifically designed for industrial use and for aggressive tertiary environments. This range will find a prominent place in the residential sector: cellars, garages, workshops, utility rooms, boiler rooms... Its reinforced IP and IK products make it ideal for use in places where a high degree of safety, sturdiness and watertightness is required.

◀ Your choice of dimensions



◀ An easy installation



3 methods of fixing the box to its support.

◀ Easy to use



Only one tool is required: a flat screwdriver.

◀ Main application

Electrical distribution

Receive and protect electrical & electronic components and control devices

Junctions

Electronics

Universal

Dedicated applications

Shunting

Industrial automatism



- Anti-condensation valves available as an accessory, prevent the build-up of moisture inside the box.



Watertightness
IP66



Robustness
IK07 - IK08

Boxes with knock-outs IP55 - IK07

E101244d



AC_01396



Overall external dimensions			Overall internal dimensions			Number of knock-outs					Standard	For security circuits
(mm)			(mm)			(Ø min. - max.)					Grey	Red
Height	Width	Depth	Height	Width	Depth	12/16	16/20	20/25	25/32	32/40	650°C	960°C

Cover clipped-on

74	74	52	65	65	45	-	4	-	-	-	ENN05082	-
89	89	52	80	80	45	-	4	-	-	-	ENN05084	ENN05174
116	74	62	105	65	55	-	6	-	-	-	ENN05083	-

E101246d



AC_01395



Overall external dimensions			Overall internal dimensions			Number of knock-outs					Standard	For security circuits
(mm)			(mm)			(Ø min. - max.)					Grey	Red
Height	Width	Depth	Height	Width	Depth	12/16	16/20	20/25	25/32	32/40	750°C	960°C

Cover quarter-turn screws

115	115	62	105	105	55	-	7	-	-	-	ENN05085	ENN05175
164	121	87	150	105	80	8	4	2	-	-	ENN05087	ENN05177
193	164	88	175	150	80	8	-	4	4	-	ENN05090	-
241	194	108	225	175	100	-	-	6	-	6	ENN05093	-
292	242	128	275	225	120	-	-	16	-	8	ENN05097	-
342	292	129	325	275	120	-	-	24	-	8	ENN05099	-

Boxes without entries IP55 - IK07

E101242d



Overall external dimensions			Overall internal dimensions			Standard	
(mm)			(mm)			Grey	White
Height	Width	Depth	Height	Width	Depth	650°C	

Cover clipped-on

89	89	52	80	80	45	ENN05044	ENN05064
----	----	----	----	----	----	----------	----------

GY9ED019



Overall external dimensions			Overall internal dimensions			Standard	
(mm)			(mm)			Grey	White
Height	Width	Depth	Height	Width	Depth	750°C	

Cover quarter-turn screws

115	115	62	105	105	55	ENN05045	ENN05065
164	121	87	150	105	80	ENN05047	-
193	164	88	175	150	80	ENN05050	-
241	194	108	225	175	100	ENN05053	-
292	242	128	275	225	120	ENN05057	-
342	292	129	325	275	120	ENN05059	-

Boxes with grommets IP55 - IK07

P12237



PB500090



PB0090



Overall external dimensions			Overall internal dimensions			Number of grommets				Standard		With terminal blocks	For security circuits	
(mm)			(mm)			(Ø min. - max.)				Grey	White	Grey	Red	Grey
Height	Width	Depth	Height	Width	Depth	4/20	4/25	4/32	4/40	650°C		650°C	960°C	
Cover clipped-on														
Ø	72	50	Ø	60	40	4	-	-	-	ENN05001	ENN05021	-	-	-
82	82	52	65	65	45	4	-	-	-	ENN05002	ENN05022	-	-	-
						7	-	-	-	ENN05032	ENN05072	-	-	-
97	97	52	80	80	45	7	-	-	-	ENN05004	ENN05024	ENN05204	ENN05164	ENN05264
124	82	62	105	65	55	8	-	-	-	ENN05003	ENN05023	-	-	-

PB500091-32



AC_01335



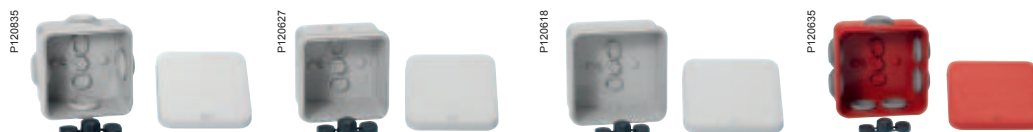
Overall external dimensions			Overall internal dimensions			Number of grommets				Standard		With terminal blocks	For security circuits	
(mm)			(mm)			(Ø min. - max.)				Grey	White	Grey	Red	Grey
Height	Width	Depth	Height	Width	Depth	4/20	4/25	4/32	4/40	750°C		750°C	960°C	
Cover quarter-turn screws														
128	128	62	105	105	55	-	7	-	-	ENN05005	ENN05025	ENN05205	ENN05165	ENN05265
172	129	87	150	105	80	-	10	-	-	ENN05007	-	-	ENN05167	ENN05267
200	176	88	175	150	80	-	10	2	-	ENN05010	-	-	-	-
251	204	108	225	175	100	-	4	8	-	ENN05013	-	-	-	-
302	255	128	275	225	120	-	-	16	4	ENN05017	-	-	-	-
355	305	129	325	275	120	-	-	10	10	ENN05019	-	-	-	-



Surface mounted boxes

Mureva boxes

Characteristics








Characteristics	Boxes with grommets	Boxes with knock-outs	Boxes without entries	Boxes security circuits
	<p>The Mureva BOX range of junction boxes is available in ten sizes, varying from the small round Ø 60 x 40 mm to the spacy rectangular 325 x 275 x 120 mm</p> <ul style="list-style-type: none">■ The boxes come in one of three entry versions:<ul style="list-style-type: none">□ with grommets□ with knock-outs□ without entries (solid faces) <p>Versions with extended temperature resistance (glow wire test 960°C) are available</p> <p>All boxes in sizes up to 105 x 65 x 55 mm have clipped-on covers, while bigger ones use four quarter-turn screws</p> <p>All boxes are packed in plastic film, enabling fast recognition of the product</p> <p>Small boxes (up to size 105 x 105 x 55 mm) are packed in fives, whereas large boxes are packed by the piece</p> <p>The products respect environmental needs, which is assured by halogen-free plastic materials (except slightly halogenated red boxes) and the use of eco-design rules (product environmental profile)</p>			
Material, box and cover	<ul style="list-style-type: none">■ The junction boxes with grommets are available in all ten sizes■ The grommet diameters are 20, 25, 32 or 40 mm, depending on the box	<ul style="list-style-type: none">■ The junction boxes with knock-outs are available in nine sizes (no small round box) with ISO diameters from M12 up to M40, depending on the box■ Metric knock-outs usually have two consecutive ISO sizes in each location, e.g. ISO 16/20 or ISO 20/25, etc■ The exception is for small boxes (up to 80 x 80 x 45 mm), which only have a single knock-out ISO 20 in each location	<ul style="list-style-type: none">■ The junction boxes with solid walls are available in seven sizes (from 80 x 80 x 45 mm to 325 x 275 x 120 mm)	<p>The junction boxes for security circuits are available in three sizes (80 x 80 x 45 mm, 105 x 105 x 55 and 150 x 105 x 80 mm) with two entry versions:</p> <ul style="list-style-type: none">■ with grommets: the grommet diameters are 20 or 25 mm, depending on the box■ with knock-outs: the knock-out diameters are M12, M16, M20 or M25, depending on the box. Metric knock-outs have two consecutive ISO sizes in each location, i.e. ISO 12/16, 16/20 and 20/25
	<p>Boxes ≤ 105 x 105</p> <ul style="list-style-type: none">■ Halogen-free■ Insulating material:<ul style="list-style-type: none">□ body made of ABS□ cover made of PP <p>Large boxes</p> <ul style="list-style-type: none">■ Halogen-free■ Insulating material: body and cover made of PP <p>Red boxes</p> <ul style="list-style-type: none">■ Slightly halogenated■ Insulating material: body and cover made of PP (960°C glow wire test) <p>Operating temperature</p> <ul style="list-style-type: none">■ - 25°C...+ 40°C <p>Flame resistance</p> <ul style="list-style-type: none">■ 650°C for boxes < 105 x 105 mm■ 750°C for boxes ≥ 105 x 105 mm■ 960°C for red and grey boxes			
Colour	<ul style="list-style-type: none">■ Standard grey series: RAL 7035 grey■ Standard white series: RAL 9010 white■ Red series: RAL 3000 red			
Ingress protection rating	IP55 to standard IEC 60529 Class II to IEC 536 assured by protection caps (supplied) and fixing screws			
Mechanical protection rating	IK07 (2J) according to EN50102			
Standards	Conforming to standard EN 60670			
Certifications	<ul style="list-style-type: none">■ EN 60670 certified by TÜV■ AENOR (pending)			
Installation	<p>Fixing the box</p> <ul style="list-style-type: none">■ Boxes up to 105 x 105:<ul style="list-style-type: none">□ single fixing central point (e.g. using powder nailer)□ through box bottom, using two oblong knock-out holes (also by using gas nailer)■ Large boxes:<ul style="list-style-type: none">□ outside usable volume, using four chimneys at box corners□ through box bottom, using two or four (depending on size) oblong knock-out holes			
Benefits	<ul style="list-style-type: none">■ Wide choice:<ul style="list-style-type: none">□ wide dimensional range with 10 sizes□ three types of entries (walls) to suit all installation methods□ boxes for specific applications (security circuits, pre-equipped with terminals)■ Safety: IP range also assured by gaskets and protection caps (supplied)■ Ease of installation:<ul style="list-style-type: none">□ quick cover closing, either by clipping-in (small boxes) or by captive quarter-turn screws assuring IP55 protection□ captive cover, with a link between body and cover, facilitating installation□ the four "feet" of the cover of boxes 105 x 105 x 55 and larger ensure rigidity and perfect stability during machining operations (e.g. customisation)□ several solutions for box fixing:<ul style="list-style-type: none">- central point (small boxes)- oblong holes- chimneys outside the IP zone (large boxes)			
Product Environmental Profile	Product Environmental Profile documents are available on www.schneider-electric.com			









Mureva boxes

Characteristics

					
Characteristics	For fixing	For cable entry	For protection	For coupling	For cabling
	Universal fixing for metal beams and cable trays	<ul style="list-style-type: none">■ Flexible entries (grommets with diameters 20 - 40 mm)■ Cable glands and gaskets■ Multi-cable discs	Various plugs for transport and ventilation	<ul style="list-style-type: none">■ Coupling kit to connect two boxes	<ul style="list-style-type: none">■ Terminals■ Support bars and mounting plate for terminal blocks
References*					

* For details, type reference in the search engine of www.schneider-electric.com

Junction boxes with grommets

	Dimensions H x L x W (mm)	Type	Colour	Reference	Qty per package	
Junction box with clipped-on cover						
P120834		Ø 60 x 40	4 grommets Ø 20	Grey	ENN05001	5
				White	ENN05021	
P120835		65 x 65 x 45	4 grommets Ø 20	Grey	ENN05002	5
		65 x 65 x 45	7 grommets Ø 20	White	ENN05022	5
				Grey	ENN05032	
P120831		80 x 80 x 45	7 grommets Ø 20	Grey	ENN05004	5
		80 x 80 x 45	7 grommets Ø 20 and terminal blocks	White	ENN05024	5
				Grey	ENN05204	
P120825		105 x 65 x 55	8 grommets Ø 20	Grey	ENN05003	5
				White	ENN05023	
Junction box with screw-fixed cover						
P120823		105 x 105 x 55	7 grommets Ø 25	Grey	ENN05005	5
				White	ENN05025	
P120810		105 x 105 x 55	7 grommets Ø 25 and terminal blocks	Grey	ENN05205	5
		150 x 105 x 80	10 grommets Ø 25	Grey	ENN05007	1
		175 x 150 x 80	10 grommets Ø 25 and 2 grommets Ø 32	Grey	ENN05010	1
		225 x 175 x 100	4 grommets Ø 25 and 8 grommets Ø 32	Grey	ENN05013	1
		275 x 225 x 120	16 grommets Ø 32 and 4 grommets Ø 40	Grey	ENN05017	1
		325 x 275 x 120	10 grommets Ø 32 and 10 grommets Ø 40	Grey	ENN05019	1

Junction boxes with grommets, DIY

	Dimensions H x L x W (mm)	Type	Colour	Reference	Qty per package
Junction box with clipped-on cover					
P120834	Ø 60 x 40	4 grommets Ø 20	Grey	ENN05121	1
P120835	65 x 65 x 45	7 grommets Ø 20	Grey	ENN05142	1
	80 x 80 x 45	7 grommets Ø 20	Grey	ENN05124	1
Junction box with screw-fixed cover					
P120823	105 x 105 x 55	7 grommets Ø 25	Grey	ENN05125	1






Surface mounted boxes

Mureva boxes


Junction boxes - IP55

Junction boxes with knock-outs

	Dimensions H x L x W (mm)	Type	Colour	Reference	Qty per package
Junction box with clipped-on cover					
	Surface mounted junction box with metric knock-outs and clipped-on cover. Degree of protection IP55, mechanical protection IK07, flame resistance 650°C. Material: ABS (body), PP (cover).				
	65 x 65 x 45	4 knock-outs M16/20	Grey	ENN05082	5
	80 x 80 x 45	4 knock-outs M16/20	Grey	ENN05084	5
	105 x 65 x 55	6 knock-outs M16/20	Grey	ENN05083	5
Junction box with screw-fixed cover					
	Surface mounted junction box with metric knock-outs and quarter-turn screw-fixed cover. Degree of protection IP55, mechanical protection IK07, flame resistance 750°C. Material: PP.				
	105 x 105 x 55	7 knock-outs M16/20	Grey	ENN05085	5
	150 x 105 x 80	8 knock-outs M12/16, 4 x M16/20 and 2 x M20/25	Grey	ENN05087	1
	175 x 150 x 80	8 knock-outs M12/16, 4 x M20/25 and 4 x M25/32	Grey	ENN05090	1
	225 x 175 x 100	6 knock-outs M20/25 and 6 x M32/40	Grey	ENN05093	1
	275 x 225 x 120	16 knock-outs M20/25 and 8 x M32/40	Grey	ENN05097	1
	325 x 275 x 120	24 knock-outs M20/25 and 8 x M32/40	Grey	ENN05099	1


Junction boxes without entries

P120618









Dimensions H x L x W (mm)	Type	Colour	Reference	Qty per package
Junction box with clipped-on cover				
Surface mounted junction box with solid walls and clipped-on cover, without entries. Degree of protection IP55, mechanical protection IK07, flame resistance 650°C. Material: ABS (body), PP (cover).				
80 x 80 x 45	Junction box without entries	Grey	ENN05044	5
		White	ENN05064	5

P120611



Junction box with screw-fixed cover				
Surface mounted junction box with solid walls and quarter-turn screw-fixed cover, without entries. Degree of protection IP55, mechanical protection IK07, flame resistance 750°C Material: PP.				
105 x 105 x 55	Junction box without entries	Grey	ENN05045	5
		White	ENN05065	5
150 x 105 x 80	Junction box without entries	Grey	ENN05047	1
175 x 150 x 80	Junction box without entries	Grey	ENN05050	1
225 x 175 x 100	Junction box without entries	Grey	ENN05053	1
275 x 225 x 120	Junction box without entries	Grey	ENN05057	1
325 x 275 x 120	Junction box without entries	Grey	ENN05059	1

Accessories for cable entries with strain relief

	ISO diameter	Diameter of cable/ conduit (mm)	No of diameters	Colour	Reference	Qty per package
Cable glands acc. to ISO standard						
 P60928	Cable gland equipped with nut and neoprene seal for one cable. May be used both for threaded and unthreaded holes. The IP68 classification assures complete protection. The temperature range is between -30° and +80°C permanently and up to +150°C intermittently. Material: PA6.					
	M12	Ø 3 / 6.5		Grey RAL 7035	ISM71501	20
	M16	Ø 4 / 8		Grey RAL 7035	ISM71502	20
	M20	Ø 6 / 12		Grey RAL 7035	ISM71503	20
	M25	Ø 11 / 17		Grey RAL 7035	ISM71504	10
	M32	Ø 15 / 21		Grey RAL 7035	ISM71505	10
	M40	Ø 19 / 28		Grey RAL 7035	ISM71506	5
Security cable gland						
 P100905	Security cable gland equipped with nut and seal for one cable, specially adapted to red boxes for safety circuits. May be used in both theaded and unthreaded holes. The IP68 and choice of plastic material ensures complete protection even in hot environments. Incandescent wire tested at 960°C. Material: PA6.					
	M20	Ø 6 / 12		Red RAL 3000	IMT36150	20
Gasket						
 P100908	Gasket for cable gland. To be used to ensure a tight fit and complete protection IP68 when mounting cable glands on rough surfaces. Material: EPDM rubber.					
	M12			Black	IMT36151	100
	M16			Black	IMT36152	100
	M20			Black	IMT36153	100
	M25			Black	IMT36154	50
	M32			Black	IMT36155	50
	M40			Black	IMT36156	25
Multi-cable discs						
 P60958	Multi-cable disc for cable glands. To be used for a secure fitting of multiple cables or wires through the same cable gland. Material: EPDM rubber					
	M16		2 x Ø 4	Black	IMT36157	40
	M20		3 x Ø 4	Black	IMT36158	40
	M25		4 x Ø 5	Black	IMT36159	20
	M32		6 x Ø 5	Black	IMT36160	20
Transport plugs						
 P60959	Transport plug for cable gland. To be used to seal a cable gland during transport, or when pre-assembling a cable gland for later use. Material: PA6.					
	M16			Black	IMT36167	40
	M20			Black	IMT36168	40
	M25			Black	IMT36169	20
	M32			Black	IMT36170	20
	M40			Black	IMT36171	10
Blanking plugs						
 P100909	Blanking plug including lock nut. To be used to seal openings in the box during transport, or as a protection for holes intended for later installations. Material: PA6.					
	M12			Grey RAL 7035	IMT36161	40
	M16			Grey RAL 7035	IMT36162	40
	M20			Grey RAL 7035	IMT36163	40
	M25			Grey RAL 7035	IMT36164	20
	M32			Grey RAL 7035	IMT36165	20
	M40			Grey RAL 7035	IMT36166	10

Accessories for cable entries without strain relief

</

Accessories for coupling

	Type	For boxes (mm)	For trunking (mm)	Color	Reference	Qty per package
Coupling kit						
Coupling M32 to be used to connect two boxes (from 105 x 105 mm) with M32 knock-outs. Enables side-by-side mounting of boxes without reduction of the IP classification Material: Polystyrene						
P120639	Coupling	From 175 x 150 x 80		Grey	13934	2

Accessories for fixing

Universal fixing for IPN profiles and cable trays						
Universal fixing intended for the fixing of < 105 x 105 mm (internal dimension) junction boxes on IPN profiles from 2 to 12 mm and all types of cable trays Material: Steel						
P100907	Universal fixing			Grey	ENN08167	10
Universal fixing for mesh trays						
Universal fixing intended for the fixing of < 105 x 105 mm (internal dimension) junction boxes on all types of mesh trays Material: PA6 with 30% glass-fibre						
P120644	Universal fixing			Grey	ENN08162	10
M6 clip						
Add-on accessory for the IPN profiles and cable trays fixing intended to enable the fixing with an M6 screw Material: Steel						
P120653	M6 clip				ENN48861	10
Fixing lugs						
Fixing lugs intended for mounting of < 105 x 105 mm junction boxes. Fixing is made outside the waterproof space Material:						
P120661	Fixing lugs				NSYAEFTB	4

Accessories for cabling

Type	Colour	Reference	Qty per package
Mounting plate			
Mounting plate for terminal blocks 2.5 mm ² and 6 mm ² in boxes 80 x 80 mm and 105 x 105 mm (internal dimensions). The plate enables mounting of eight 2.5 mm ² blocks or two 6 mm ² blocks or a combination of both. Material: PC.			
 P120643 P100598 Mounting plate	Anthracite RAL 7016	ENN08241	10
Terminal blocks			
6-pole push-in terminal block approved for max. 85°C. Max cable area 6 x 2.5 mm ² . Material: PA.			
 P80938 Spring terminal 6 x 2.5 mm ²	White	WDE0000010	100
3-pole screw-type terminal block. 440 V. Material: PA.			
 P80988 Screw terminal 3 x 6 mm ²	Black	IMT36089	20
Earth terminal marked with an earth sign for easy recognition during maintenance operations. Material: CuZn37-R350/H095.			
Earth terminal	Red	IMT34009	10
4-hole terminal blocks			
4-holes terminal block to be used together with support bar. Boxes from 175 x 150 mm (internal dimension) accept mounting of a 12 x 2 mm bar that can be used for easy clip-on of up to 8 terminal blocks (depending on sizes of bars and terminal blocks, see selection guide below). Material: Brass bars in a plastic housing.			
 PB502585 Phase, 2 x 10 mm ² + 2 x 16 mm ²	Red	IMT34003	10
 PB0964 Neutral, 2 x 10 mm ² + 2 x 16 mm ²	Blue	IMT34005	5
Terminal block like the above but supplied including a separate yellow sticker with the earth symbol. When required, the symbol can be stuck to the cover of the terminal block			
 P120793 Earth, 2 x 10 mm ² + 2 x 16 mm ²	Green	IMT34007	5
Support bar			
12 x 2 mm support bar for 4-holes terminal blocks. For easy clip-on up to 8 terminal blocks (depending on sizes of bars and terminal blocks, see selection guide below), which frees considerable space for introduction of cables. Including plastic feet and screws. Material: Galvanised steel bar on plastic feet.			
 PB500294 Support bar Ls = 140 mm	-	IMT34000	1
Support bar Ls = 185 mm	-	IMT34001	1
Support bar Ls = 235 mm	-	IMT34002	1

Selection guide

Number of terminal blocks per support bar

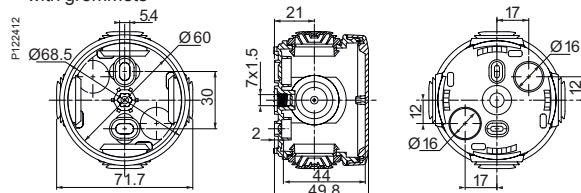
	Terminal block 2 x 10 mm ² + 2 x 16 mm ²	For boxes (mm)
Support bar 140 mm (ref. IMT34000)	4 -	175 x 150 225 x 175
Support bar 185 mm (ref. IMT34001)	6 - 3	225 x 175 275 x 225
Support bar 235 mm (ref. IMT34002)	8 - 3 4	275 x 225 325 x 275

Box of Ø 60 x 40 mm

Interior with grommets

Side

Rear



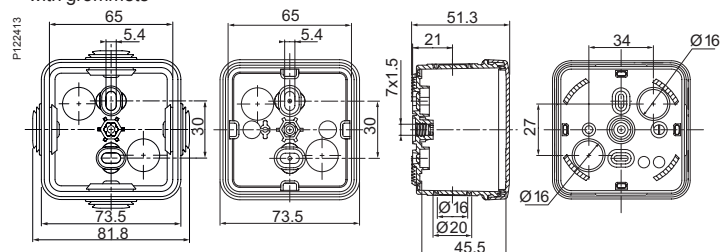
Box of 65 x 65 x 45 mm

Interior with grommets

Interior

Side

Rear



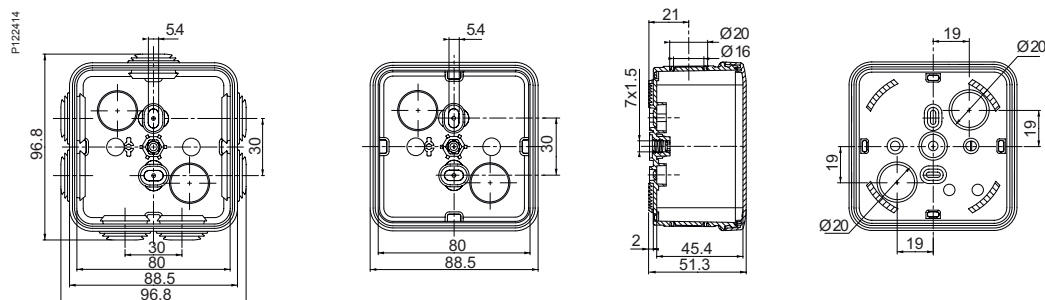
Boîtes 80 x 80 x 45 mm

Interior with grommets

Interior

Side

Rear



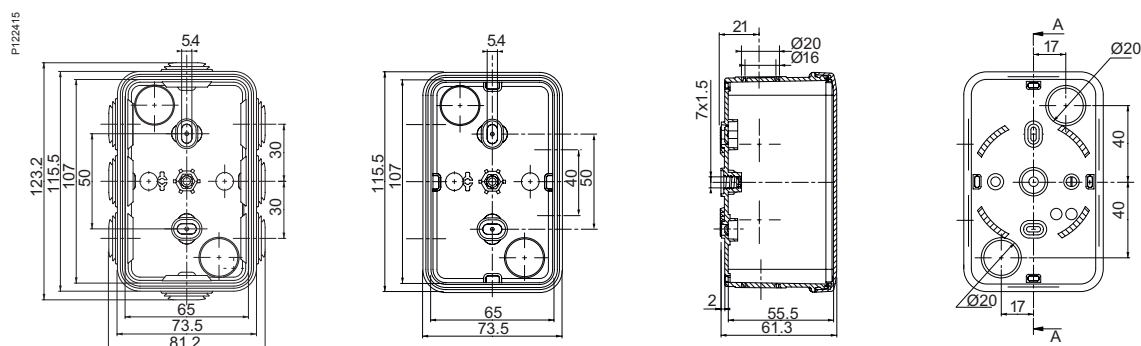
Boîtes 105 x 65 x 55 mm

Interior with grommets

Interior

Side

Rear



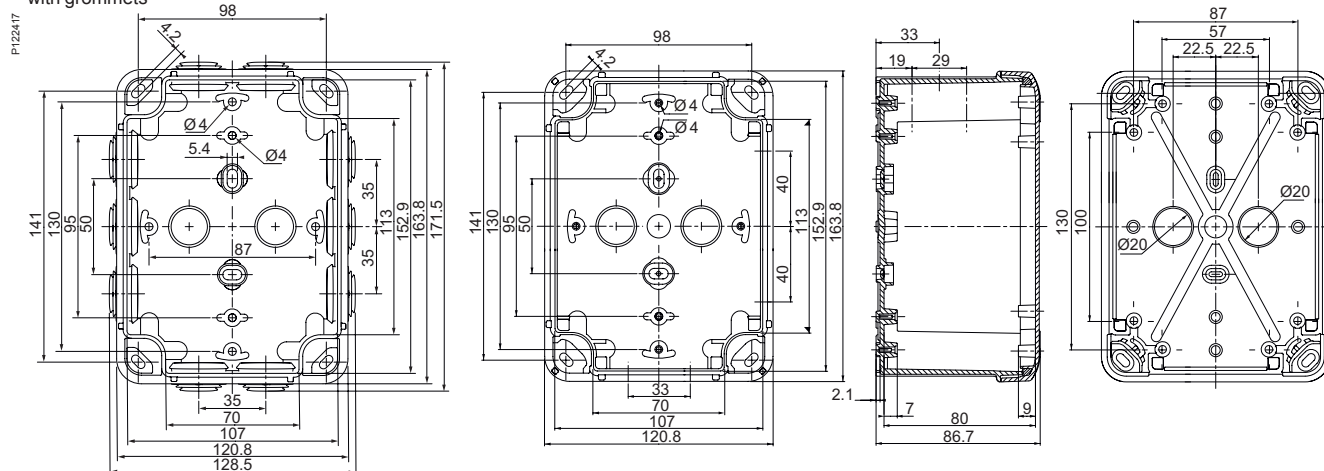
Boîtes 150 x 105 x 80 mm

Interior with grommets

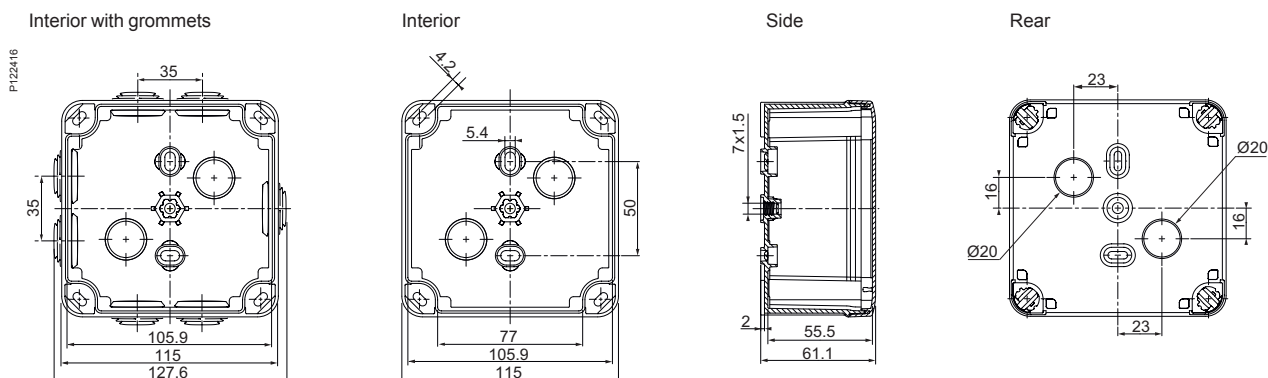
Interior

Side

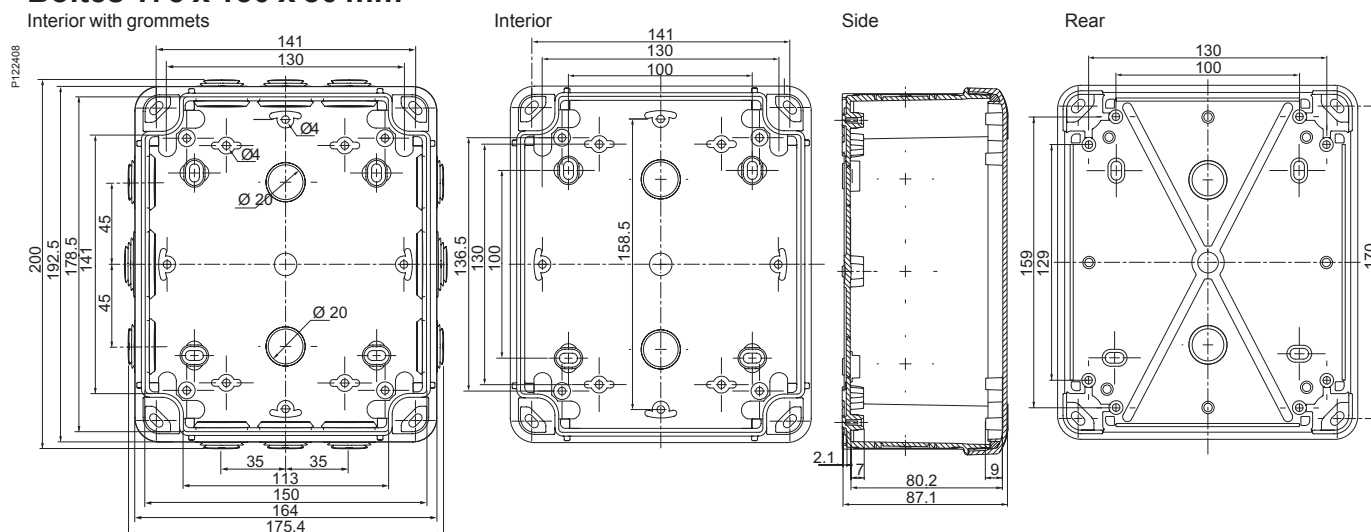
Rear



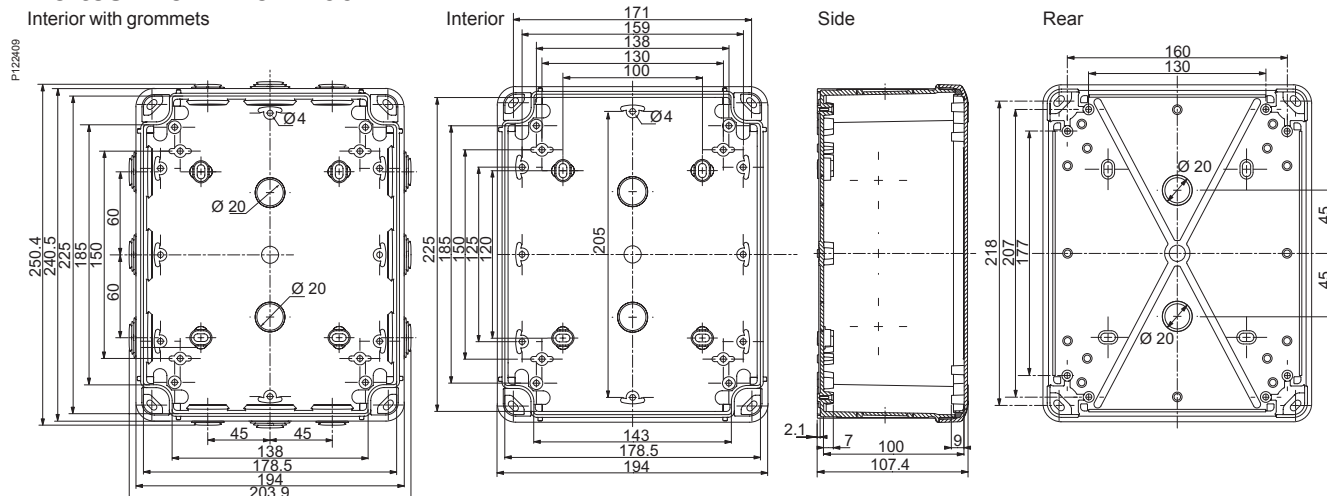
Boîtes 105 x 105 x 55 mm



Boîtes 175 x 150 x 80 mm



Boîtes 225 x 175 x 100 mm



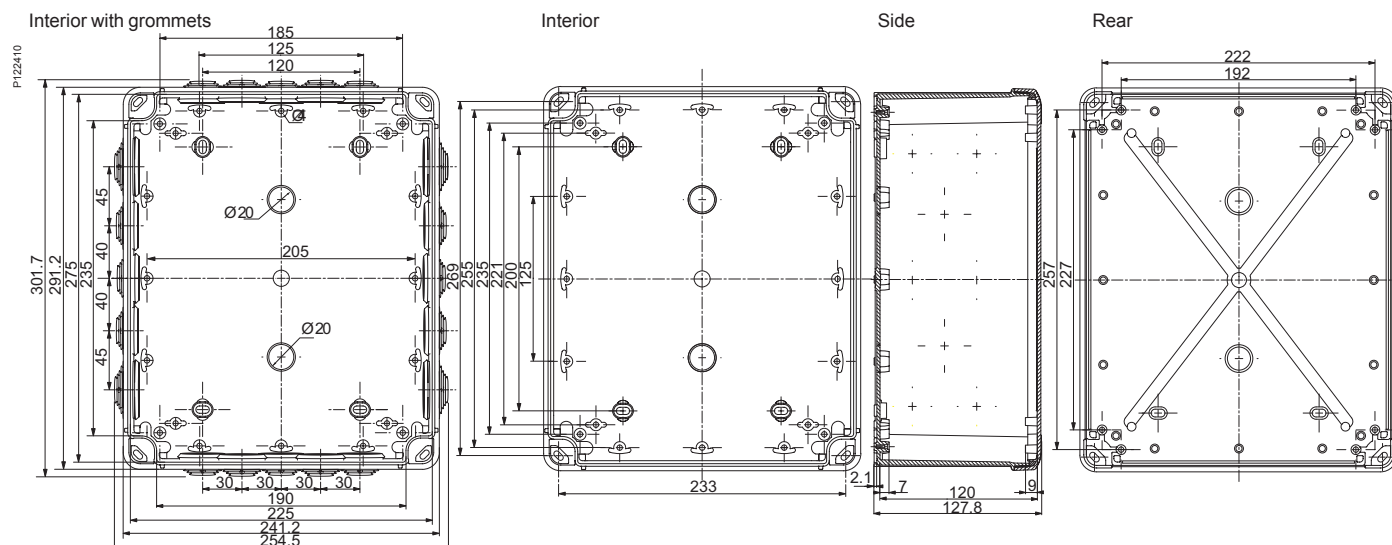


Surface mounted boxes

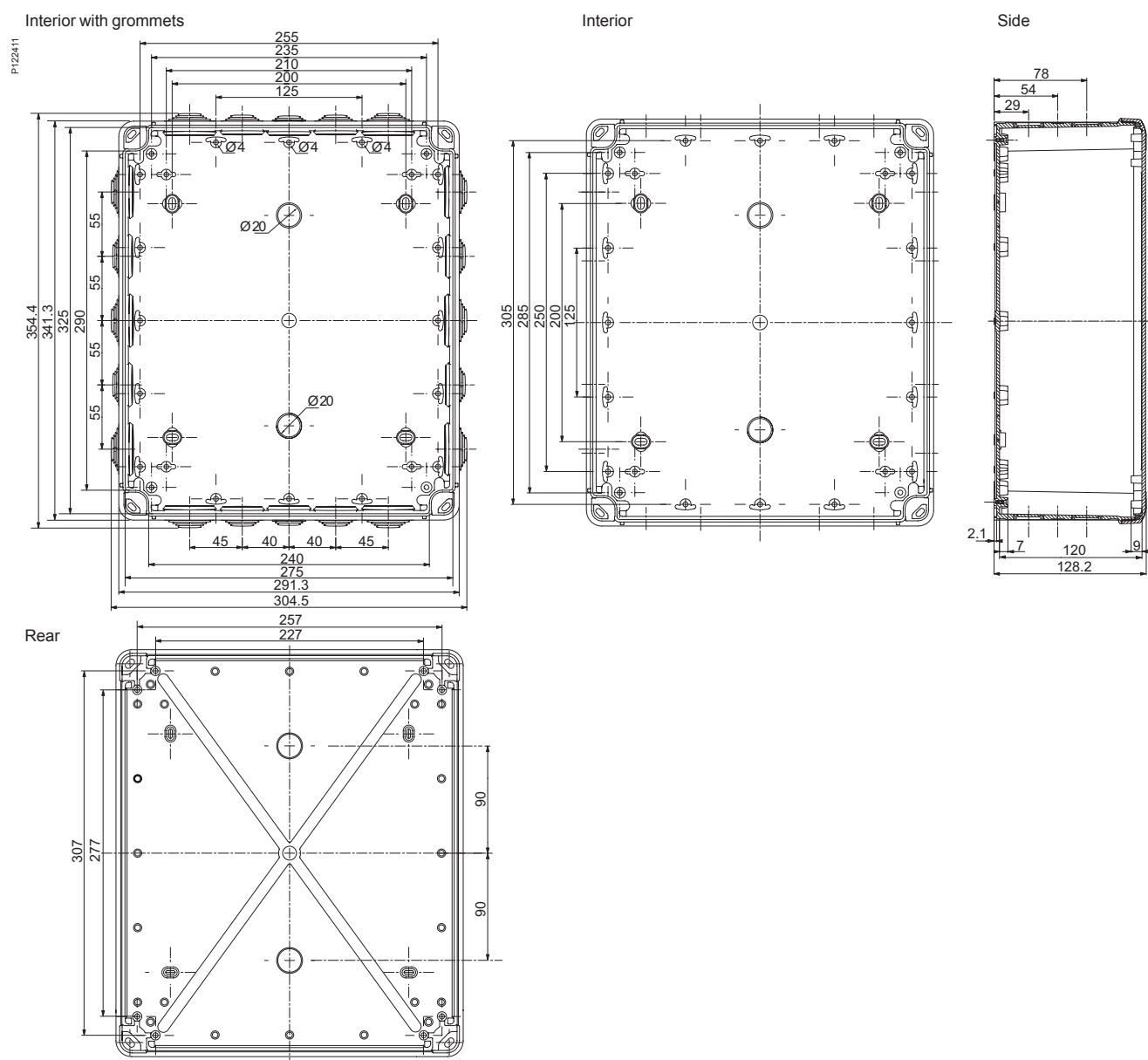
Mureva boxes

Dimensions

Boîtes 275 x 225 x 120 mm

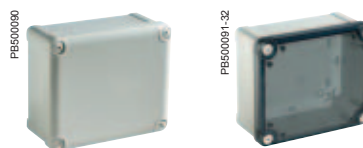


Boîtes 325 x 275 x 120 mm



Thalassa boxes

Selection guide



Overall external dimensions			Overall internal dimensions			Body	Cover	Minor pack.	Cover screw	Universal boxes with IP66			
(mm)			(mm)			(mm)	(mm)			ABS IP66 IK07		PC-UL IP66 IK08	
Height	Width	Depth	Height	Width	Depth					Opaque cover	Transparent cover	Opaque cover	Transparent cover
74	74	54	65	65	47	37	10	5	Metal	NSYTBS775	-	NSYTBP775	-
89	89	54	80	80	47	37	10	5	Metal	NSYTBS885	-	NSYTBP885	-
116	74	62	105	65	55	45	10	5	Metal	NSYTBS1176	-	NSYTBP1176	-
		94	105	65	85	45	40	3	Metal	NSYTBS1179H	-	-	-
		62	105	105	55	45	10	5	Plastic	NSYTBS11116	-	NSYTBP11116	-
138	93	133	105	105	125	45	80	2	Plastic	NSYTBS11113H	-	-	-
		72	125	80	65	45	20	2	Plastic	NSYTBS1397	NSYTBS1397T	NSYTBP1397	NSYTBP1397T
		87	150	105	80	60	20	2	Plastic	NSYTBS16128	NSYTBS16128T	NSYTBP16128	NSYTBP16128T
164	121	87	175	105	80	60	20	2	Plastic	NSYTBS19128	NSYTBS19128T	NSYTBP19128	NSYTBP19128T
192	121	105	175	105	100	60	40	2	Plastic	NSYTBS191210H	NSYTBS191210HT	NSYTBP191210H	NSYTBP191210HT
		87	175	150	80	60	20	1	Plastic	NSYTBS19168	NSYTBS19168T	NSYTBP19168	NSYTBP19168T
		105	175	150	100	60	40	1	Plastic	NSYTBS191610H	NSYTBS191610HT	NSYTBP191610H	NSYTBP191610HT
241	194	87	225	175	80	60	20	1	Plastic	NSYTBS24198	NSYTBS24198T	NSYTBP24198	NSYTBP24198T
		107	225	175	100	80	20	1	Plastic	NSYTBS241910	NSYTBS241910T	NSYTBP241910	NSYTBP241910T
		107	225	175	100	60	40	1	Plastic	NSYTBS241910H	NSYTBS241910HT	NSYTBP241910H	NSYTBP241910HT
		127	225	175	120	80	40	1	Plastic	NSYTBS241912H	NSYTBS241912HT	NSYTBP241912H	NSYTBP241912HT
291	241	88	275	225	80	60	20	1	Plastic	NSYTBS29248	NSYTBS29248T	NSYTBP29248	NSYTBP29248T
		128	275	225	120	100	20	1	Plastic	NSYTBS292412	NSYTBS292412T	NSYTBP292412	NSYTBP292412T
		128	275	225	120	60	60	1	Plastic	NSYTBS292412H	NSYTBS292412HT	NSYTBP292412H	NSYTBP292412HT
		168	275	225	160	100	60	1	Plastic	NSYTBS292416H	NSYTBS292416HT	NSYTBP292416H	NSYTBP292416HT
341	291	128	325	275	120	100	20	1	Plastic	NSYTBS342912	NSYTBS342912T	NSYTBP342912	NSYTBP342912T
		168	325	275	160	100	60	1	Plastic	NSYTBS342916H	NSYTBS342916HT	NSYTBP342916H	NSYTBP342916HT

Thalassa boxes

Selection guide



Overall external dimensions (mm)			Overall internal dimensions (mm)			Body (mm)	Cover (mm)	Minor pack.	Boxes equipped with IP54 ABS buttons		ABS button boxes, to be equipped		
Height	Width	Depth	Height	Width	Depth				Function	References	No. of holes	Cover	References
74	74	83	-	-	-	-	-	1	Emergency switching off	XALEK1702 (1)	-	-	-
116	74	62	105	65	55	45	10	5	-	-	2	Grey	XALE2
		62	105	65	55	45	10	5	-	-	3	Grey	XALE3
		75	-	-	-	-	-	1	Start / stop	XALE2141	-	-	-
		75	-	-	-	-	-	1	Up / down / stop	XALE3255	-	-	-

(1) Ref. **XALEK1702** houses an emergency switching off palm button with mechanical locking according to standards IEC 60364-5-53 and 60947-5-5.

Button description

- Emergency switching off function with a red, Ø 40 mm, "turn to unlock" palm button
- Start / Stop function with 2 push buttons
- Up / Down / Stop function with 3 push buttons
- Technical features of the switches:
 - "NC" switch with positive opening manoeuvre according to IEC 60947-5-1 appendix K
 - mechanical durability of the emergency switch: 0.1 million cycles
 - mechanical durability of the "NC" and "NO" switches: 5 million cycles
 - protection against short circuits: 10 A

Function	Type			
	"NO"	"NC"	"C / O"	Type of push
Emergency switching off	1	1	-	Latching, red
Start/stop				
Start	1	-	-	Flush, green
Stop	-	1	-	Projecting, red
Up / down / stop				
Up	-	-	1	Flush, black
Down	-	-	1	Flush, white
Stop	-	1	-	Projecting, red
	P122402	P122403	P122404	



Characteristics	Universal boxes with IP66	Equipped button boxes, in ABS with IP54	ABS boxes for buttons, to be equipped
	<ul style="list-style-type: none"> Boxes that can be coupled (exactly the same dimensions) with kit ref. 13934 Locks from box size of 116 x 116 x 62 mm: <ul style="list-style-type: none"> cover locking by 4 plastic captive screws with coarse thread outside the sealed area plumbable lock Locks from box size of 138 x 93 x 72 mm: the standard screws (flat screwdriver) can be replaced with other standardised screws (page 28) The 4 "legs" of the cover ensure its robustness and perfect support during customisation operations Adaptable hinges on all the 20- and 40-mm covers (page 30) 		
Material	<ul style="list-style-type: none"> ABS boxes: <ul style="list-style-type: none"> glow wire resistance: 650°C according to IEC 60695-2-11 usage temperature: -25°C...+60°C installation temperature: -15°C...+40°C Polycarbonate boxes: <ul style="list-style-type: none"> glow wire resistance: 960°C usage temperature: -25°C...+80°C installation temperature: -15°C...+60°C 	<ul style="list-style-type: none"> ABS boxes: <ul style="list-style-type: none"> glow wire resistance: 650°C according to IEC 60695-2-11 usage temperature: -25°C...+60°C installation temperature: -15°C...+40°C 	
Colour	<ul style="list-style-type: none"> Body: RAL 7035 grey Cover: RAL 7035 grey or tinted transparent 		
Ingress protection rating	IP66	IP54	-
Mechanical protection rating	ABS: IK07 (2J) according to IEC 62262 Polycarbonate: IK08 (2J) according to IEC 62262		
Standards	IEC 62208		
Certifications	<ul style="list-style-type: none"> IEC 62208 certified by TÜV SEMKO, DEMKO UL 508A: polycarbonate range Product Environmental Profile NEMA 4.4X according to NEMA 250 Class II according to IEC 61140 Self-extinguishing: UL 94-V0 	<ul style="list-style-type: none"> IEC 62208 certified by TÜV SEMKO, DEMKO UL 508A: polycarbonate range Product Environmental Profile NEMA 4.4X according to NEMA 250 Class II according to IEC 61140 	
Installation	Fixing the box <ul style="list-style-type: none"> Outside the sealed sensitive volume by the 4 chimneys in the corners from box size of 138 x 93 x 72 mm Through the rear of the box by 2 or 4 elongated holes to be perforated With fixing lugs from box size of 116 x 116 x 62 mm (ref. NSYAEFTB) Outdoor installation: compliant with IEC 62208 regarding type tests specified in §9.12 (resistance to ultra-violet (UV) radiation) and §9.13 (resistance to corrosion). It is always advisable to install a canopy to avoid water stagnation on the upper part of the enclosure Equipment installation <ul style="list-style-type: none"> Studs for fixing the equipment in the body and the cover of the box by means of a Ø 4-mm self-tapping screw (ref. NSYAMFSTB, screw Ø 4 x 10 mm with Pozidriv and slotted head) Option of installing rails, plates (page 31) or other types of supports (card, etc.) Spacers and stand-offs to be installed on the studs, for adjusting the height of the equipment 		
Other characteristics	<ul style="list-style-type: none"> Thermal dissipation: <ul style="list-style-type: none"> use a suitable calculation method according to IEC 60890 anti-condensation valves available as an accessory, prevent the build-up of moisture inside the box 	<ul style="list-style-type: none"> Thermal dissipation: <ul style="list-style-type: none"> use a suitable calculation method according to IEC 60890 anti-condensation valves available as an accessory, prevent the build-up of moisture inside the box 	

Cable entries overview

PB500266



PB500975



PB500267



PB500976



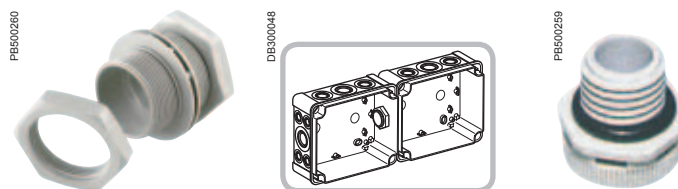
PB500099



Characteristics	Simple-1	Simple-2	Simple-3	Simple-4	Simple-5
	Mixed membrane entries for enclosure thickness 20/10° - 32/10° mm.	PVC adjustable cone-shaped entries for enclosure thickness 30/10° - 32/10° mm.	Quick cable entries for enclosure thickness 10/10° - 40/10° mm.	PVC adjustable cone-shaped entries for Pg tubes or for enclosure thickness 12/10° - 15/10° mm.	ISO cable gland.
Cable entry material	Soft membrane		Combined		
Cable glands to be fitted	Not applicable				
Installation possibilities	On cable gland plate or directly on enclosure				
Flexibility of the installation	Low				
Reversibility	Medium				
Ingress protection rating	IP55	IP55	IP67	IP55	IP68
Cable retention	Low	Low	Medium	Low	High
Cable diameter (mm)	From 20 to 40	From 18 to 87	From 12 to 50	From 16 to 44	From 12 to 40
Cable Installation time	Fast	Fast	Fast	Fast	Slow
Quantity of cables to be fitted for a given surface	+	+	+	+	+
Cable entries for cables with connectors	No	No	No	No	No
Cut-out dimensions (mm)	Various circular hole diameters according to cable diameter				
External dimensions (mm)	-	From Ø 25 to 98	-	From Ø 25 to 52	From Ø 15 to 46
Certificates	-	-	-	-	-
Flame resistance	750°C	-	750°C	-	750°C

References*

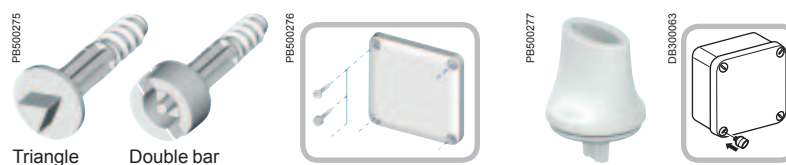
* For details, type reference in the search engine of www.schneider-electric.com



Characteristics		Coupling kit	Sealed anti-condensation valve		
		The coupling kit allows you to join several boxes with dimensions from 138 x 93 mm	Controls the pressure to avoid condensation following an internal temperature increase Applications Protection of equipment for luminaires, industrial control, transportation, pumps, etc		
Material		Polystyrene 650°	PA6-V2, acrylic co-polymer membrane, water and oil repellent		
Ingress protection rating		IP66	IP68		
Installation		The kit is installed by drilling a hole with Ø 32 mm in the boxes to be coupled	The valve is installed by drilling a hole with Ø 12 mm in the box		
Usage temperature		-	-40...+105°C		
Supply		The kit consists of 2 linking parts, nuts and seals	10 valves, nuts and seals		
Drill Ø	Minor pack.	Reference	Permeability (1)	Pressure difference (2)	References
32 mm	1	13934	-	-	-
M12	10	-	16 litres/h	$\Delta P < 1$ bar	NSYCAG12LPH1
M12	10	-	120 litres/h	$\Delta P < 0.1$ bar	NSYCAG12LPH2

(1) Air flow under $\Delta P = 0.7$ bar.
(2) Condition for IP68.

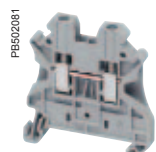
Cover accessories



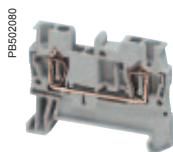
Characteristics			Set of 4 shape screws			Pack of 4 handles
			<ul style="list-style-type: none"> The Thalassa boxes are delivered as standard with slotted-head screws for flat screwdrivers from 4 to 5.5 mm With box sizes from 138 x 93 x 72 mm, these screws can be replaced for screws with different standardised heads, to comply with most cases After removing the standard screw, simply position the new screw by pressing on it The adapter clips (intermediate parts for tightening the cover on the body of the box) are the same as those for the standard screws. They are not delivered with the shape screws (see drawing on page 30) A single key for opening the boxes as well as the other enclosures of your installation 			<ul style="list-style-type: none"> The handle (or thumbwheel) allows the screws to be handled without any tools. It is ideally associated with a box equipped with hinges It snaps onto the head of the standard plastic screw
Type	Minor pack.		Height of the lid (mm)			
			20	40	60	
Triangle 6.5 mm	1	NSYAEDST620TB (1)	-	-	-	-
8 mm	1	NSYAEDST820TB	-	-	-	-
Double bar 3 mm	1	NSYAEDSB320TB	-	-	-	-
5 mm	1	NSYAEDSB520TB	-	-	-	-
Spare standard plastic screw	1	NSYAEDS20TB	NSYAEDS40TB	NSYAEDS60TB	-	-
Pack of 4 handles	1	-	-	-	-	NSYAEDKTB

(1) CNOMO.

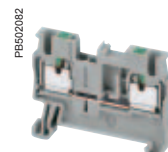
Terminal blocks



NSYTRV**



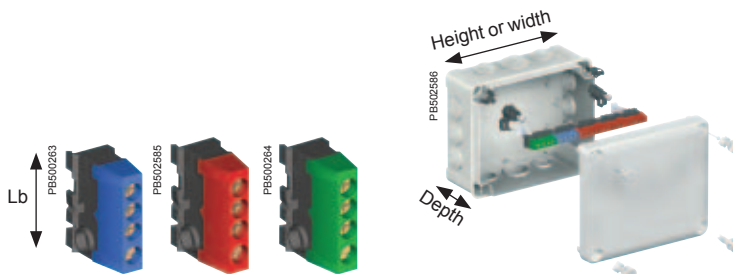
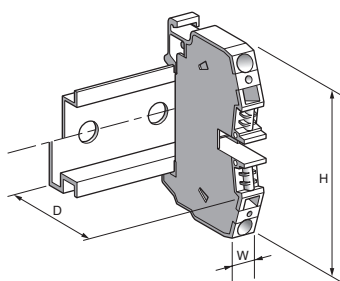
NSYTRR**



NSYTRP**

Characteristics	DIN rail terminal blocks									
	<ul style="list-style-type: none"> The new Linergy TR terminal blocks have 3 types of connections: screw, spring or "push-in" and they can be mounted on a DIN rail Connection capacity from 1.5 mm² up to 150 mm² Available in grey, blue, orange, red, green, black or white color 									
Minor pack.	50									
Type	Screw connection				Spring connection				"Push-in" connection	
	H (mm)	W (mm)	D (mm)	References	H (mm)	W (mm)	D (mm)	References	References	
Passthrough, 2.5 mm ² , grey	47.5	5.2	47.7	NSYTRV22	48.5	5.2	36.5	NSYTRR22	NSYTRP22	
Passthrough, 2.5 mm ² , blue	47.5	5.2	47.7	NSYTRV22BL	48.5	5.2	36.5	NSYTRR22BL	NSYTRP22BL	
Protective earth, 2.5 mm ²	47.5	5.2	47.7	NSYTRV22PE	48.5	5.2	36.5	NSYTRR22PE	NSYTRP22PE	
Passthrough, 4 mm ² , grey	65.4	5.2	47.7	NSYTRV44	56	6.2	36.5	NSYTRR42	NSYTRP42	
Passthrough, 4 mm ² , blue	65.4	5.2	47.7	NSYTRV44BL	56	6.2	36.5	NSYTRR42BL	NSYTRP42BL	
Protective earth, 4 mm ²	65.4	6.2	47.7	NSYTRV44PE	56	6.2	36.5	NSYTRR42PE	NSYTRP42PE	

DB300725

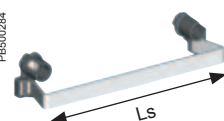


Characteristics	4-hole terminal blocks		
	<ul style="list-style-type: none"> The 4-hole terminal block support bar is particularly well suited to the thermoplastic boxes Boxes with sizes from 192 x 116 mm can accommodate a terminal-block support bar of 12 x 2 mm The screwing terminal blocks are easily clipped onto this bar Terminal-block connection capacity: see the selection table below 		
Minor pack.	10	5	5
Type	Red (live)	Blue (neutral)	Green (earth)
4-hole terminal blocks* 2 x 10 ² + 2 x 16 ²	IMT34003	IMT34005	IMT34007
Earth terminal block** 2 x 25 ²	IMT34009	-	-

* Terminal block length (Lb): 30 mm.

** The earth terminal snap fits into boxes with dimensions of less than 116 x 116 mm.

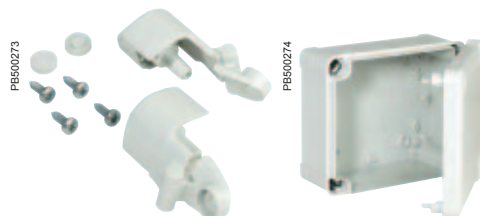
PB500284

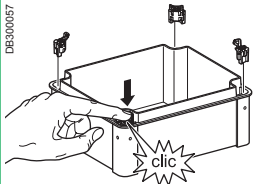
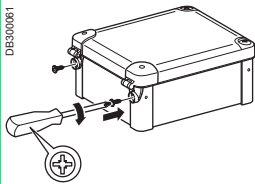
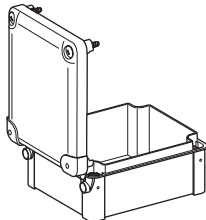
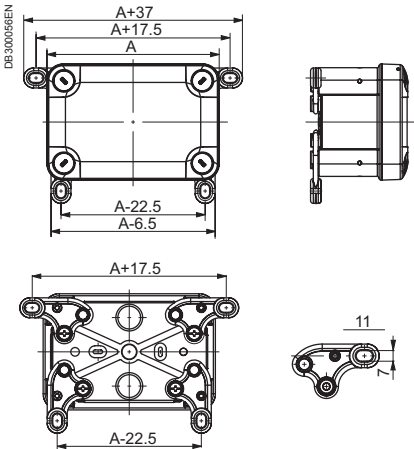


Terminal-block support bar				No. of Terminal blocks 2 x 10 ² + 2 x 16 ² 4 holes	Support length Ls (mm)
Height or width	Min. depth	Minor pack.	References		
192	87	1	IMT34000	4	140
241	87	1	IMT34001	6	185
291	128	1	IMT34002	8	235

Discover our complete terminal blocks range in **LVYED213001EN**.

Hinges



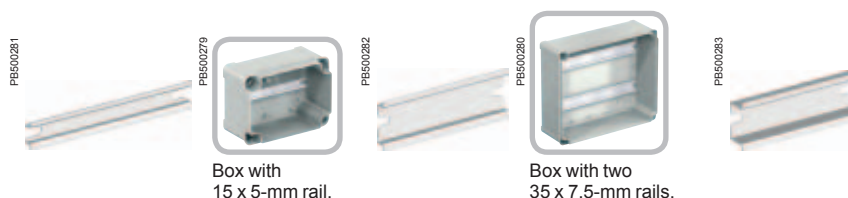
Characteristics	Set of 2 hinges	Set of 4 fixing lugs								
	<ul style="list-style-type: none">■ The hinges can be adapted to all covers with a height of 20 and 40 mm with dimensions from 138 x 93 mm■ The hinge allows the lid to open fully to 200°	<ul style="list-style-type: none">■ Plastic fixing lugs for installation on boxes with dimensions from 116 x 116 mm■ Option of vertical or horizontal installation								
Ingress protection rating	IP66	IP66								
Installation	<ul style="list-style-type: none">■ The hinge allows an opening angle > 200°■ The hinge does not require any machining and is installed easily even with the box already equipped	Installation by a single screw at the last moment, with the box closed and equipped								
Maximum load	Hinged cover: 10 kg/m²	<ul style="list-style-type: none">■ Body: 30 kg/m²■ Cover: 10 kg/m²								
Minor pack.	1	1								
Supply	The hinges (2 per set) are delivered with the fixings									
	<table><tr><th>Height of the lid (mm)</th><th>References</th></tr><tr><td>20</td><td>NSYAEDH20TB</td></tr><tr><td>40</td><td>NSYAEDH40TB</td></tr></table>	Height of the lid (mm)	References	20	NSYAEDH20TB	40	NSYAEDH40TB	<table><tr><th>Reference</th></tr><tr><td>NSYAEFTB</td></tr></table>	Reference	NSYAEFTB
Height of the lid (mm)	References									
20	NSYAEDH20TB									
40	NSYAEDH40TB									
Reference										
NSYAEFTB										
	<div><div><div>DB300057</div></div><div><div>DB300061</div></div><div><div>DB300062-32</div></div></div>	<div><div><div>DB300056EN</div></div></div>								

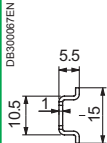
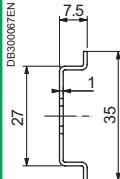
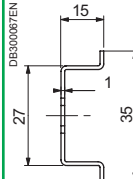
Installation accessories

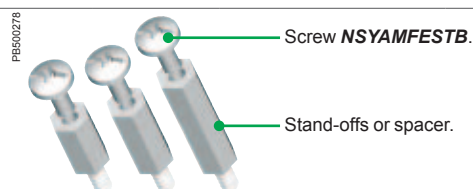


Characteristics					Mounting plates	
					Mounting plates made to adapt to all usage scenarios	
Material					Galvanised-steel	Insulating polyester plate reinforced with fibreglass, halogen-free: glow wire resistance 750°C
Thickness					15/10° mm	25/10° mm
Installation					■ Fixing by means of Ø 4-mm self-tapping screws, Pozidrive and slotted head, ref. NSYAMFSTB ■ To raise the plate, use the stand-offs ref. NSYAMFET154TB , NSYAMFET204TB , NSYAMFET304TB and the screw NSYAMFESTB ■ To stack several mounting plates, use the spacers, ref. NSYAMFEP154TB , NSYAMFEP204TB , NSYAMFEP304TB and the screw NSYAMFESTB	
Supply					Plates supplied without screws	
Box (mm)		Dimensions (mm)		Minor pack.	References	
Height	Width	A	B			
192	164	168.5	140	1	NSYAMP1916TB	NSYAMPA1916TB
241	194	215	168.5	1	NSYAMP2419TB	NSYAMPA2419TB
291	241	265	215	1	NSYAMP2924TB	NSYAMPA2924TB
341	291	315	265	1	NSYAMP3429TB	NSYAMPA3429TB
Accessories					Pack of 100 screws	
Ø 4 x 10 mm					NSYAMFSTB	NSYAMFSTB

Installation accessories



Characteristics	Rails					
	Symmetric DIN rails ■ A 15 x 5-mm rail is provided for the compact terminal blocks ■ To raise the rail, use stand-offs ref. NSYAMFET154TB , NSYAMFET204TB , NSYAMFET304TB and the screw NSYAMFESTB					
Installation	Fixing of the rails with Ø 4-mm self-tapping screws, (not included), Pozidrive and slotted head, ref. NSYAMFSTB					
Supply	Supplied without screws (except for the 15 x 5 mm rails)					
For boxes with height or width	15 x 5 mm		35 x 7.5 mm		35 x 15 mm	
(mm)	Minor pack.	References	Minor pack.	References	Minor pack.	References
105	10	NSYAMRD11155TB	10	NSYAMRD11357TB	-	-
150	10	NSYAMRD16155TB	10	NSYAMRD16357TB	-	-
175	10	NSYAMRD19155TB	10	NSYAMRD19357TB	-	-
225	10	NSYAMRD24155TB	10	NSYAMRD24357TB	10	NSYAMRD243515TB
275	10	NSYAMRD29155TB	10	NSYAMRD29357TB	10	NSYAMRD293515TB
325	10	NSYAMRD34155TB	10	NSYAMRD34357TB	10	NSYAMRD343515TB
						
Accessories	Pack of 100 screws					
Ø 4 x 10 mm	NSYAMFSTB					



Characteristics	Stand-offs		Spacers
	Stand-offs consisting of a Ø 4-mm self-tapping thread at one end (for direct screwing into the rivets of the box) and an M4 tapping on the other end, for direct installation of a card with an M4 screw, ref. NSYAMFESTB , or of a spacer		Spacer for installation on the stand-offs M4 thread and tapping
Material	Steel		Steel
Supply	Set of four M4 self-tapping stand-offs		Set of four M4 spacers
Height (mm)	Minor pack.	References	References
15	1	NSYAMFET154TB	NSYAMFEP154TB
20	1	NSYAMFET204TB	NSYAMFEP204TB
30	1	NSYAMFET304TB	NSYAMFEP304TB
			<p>H = 15, 20, 30</p>
Accessories	Screw for stand-offs and spacers		
	M4 x 10 mm screw for fixing cards on the spacers and stand-offs		
	<ul style="list-style-type: none"> The plate always at the right level A single Ø 4-mm screw for fixing any element 		
Supply	Batch of 50 screws		
	Minor pack.	References	
	1	NSYAMFESTB	

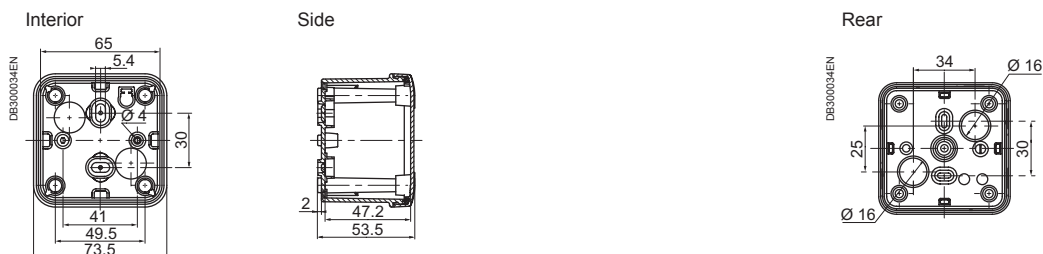


Surface mounted boxes

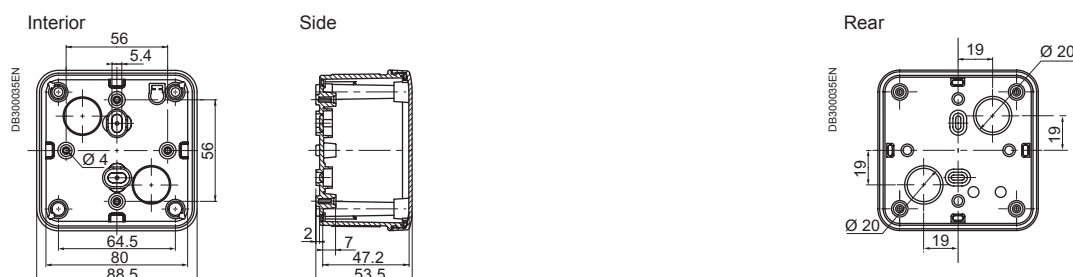
Thalassa boxes

Dimensions

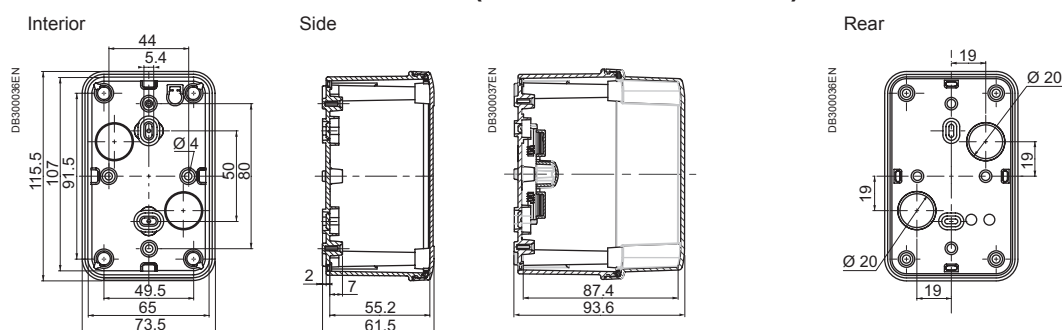
Box of 74 x 74 x 54 mm (external dimensions) NSYTB...775



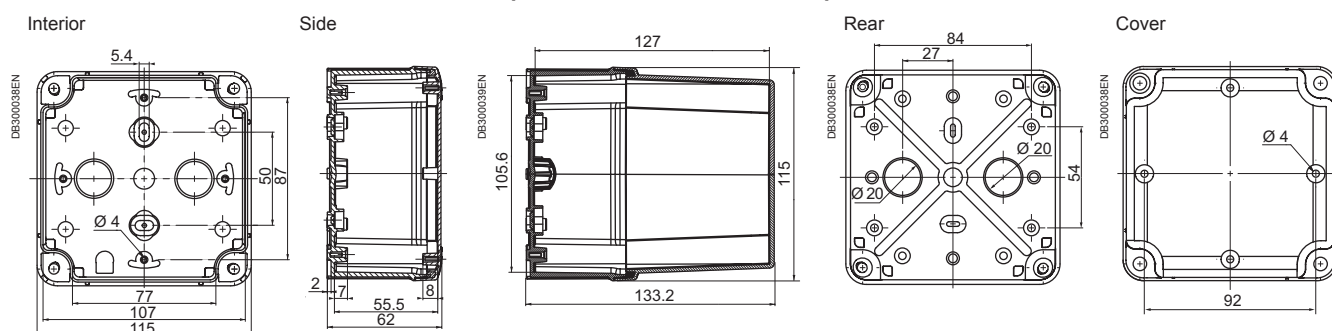
Box of 89 x 89 x 54 mm (external dimensions) NSYTB...885



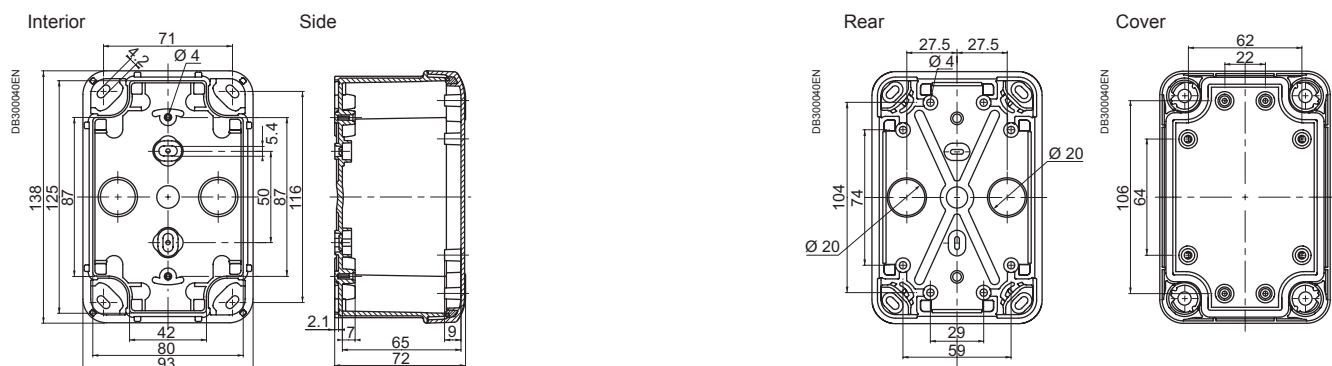
Box of 116 x 74 x 62 or 94 mm (external dimensions) NSYTB...1176 or NSYTB...1179



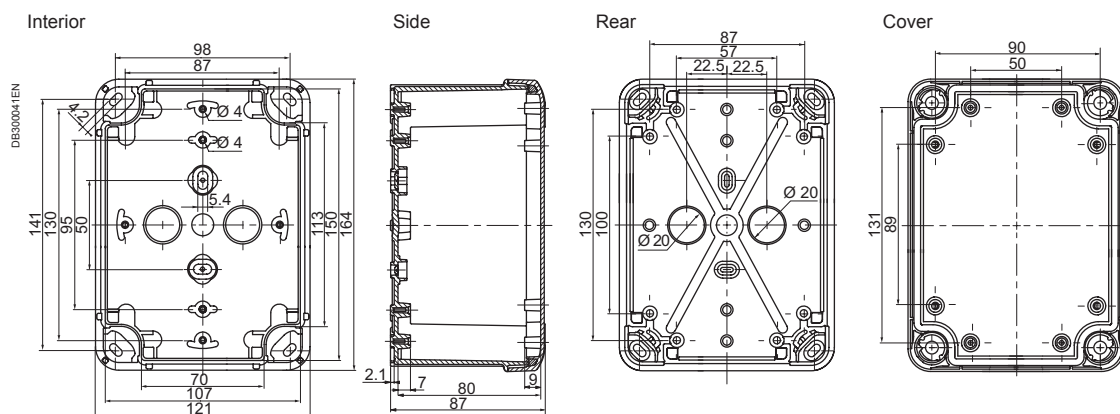
Box of 116 x 116 x 62 or 133 mm (external dimensions) NSYTB...11116 or NSYTB...11113



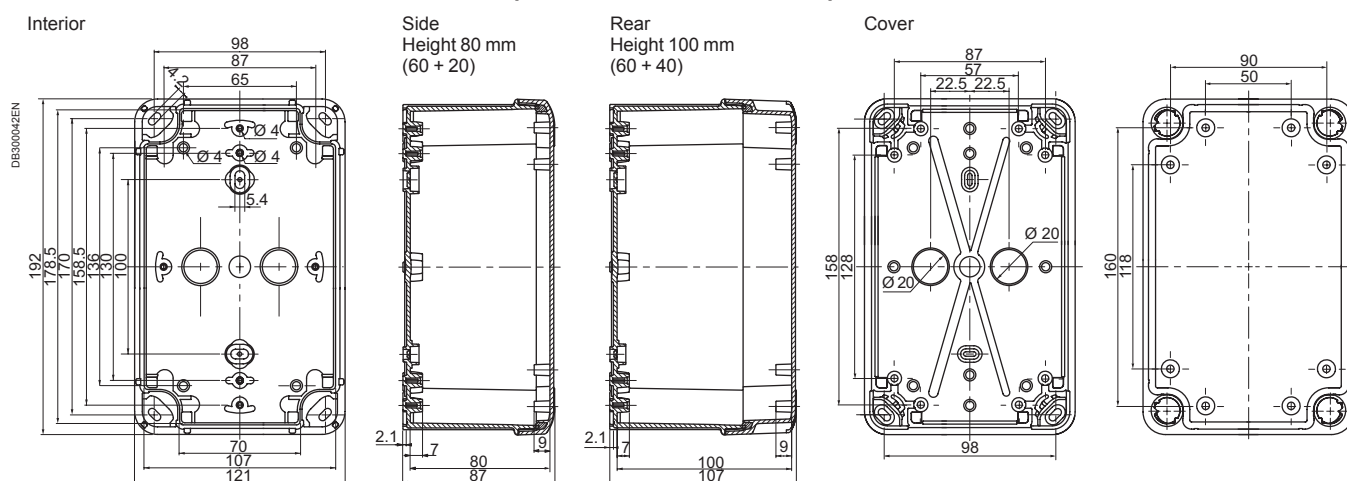
Box of 138 x 93 x 72 mm (external dimensions) NSYTB...1397



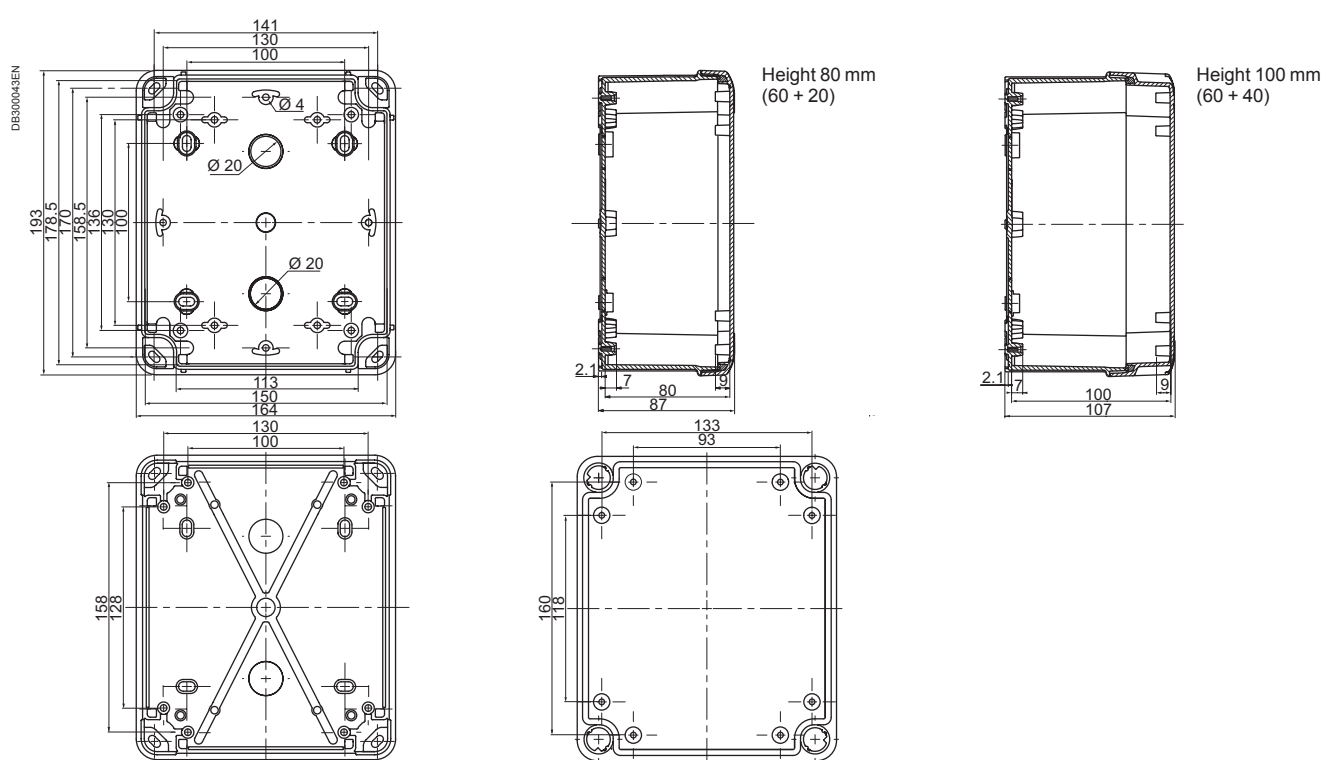
Box of 164 x 121 x 87 mm (external dimensions) NSYTB...16128



Box of 192 x 121 x 87 or 105 mm (external dimensions) NSYTB...19128 or NSYTB...191210



Box of 192 x 164 x 87 or 105 mm (external dimensions) NSYTB...19168 or NSYTB...191610



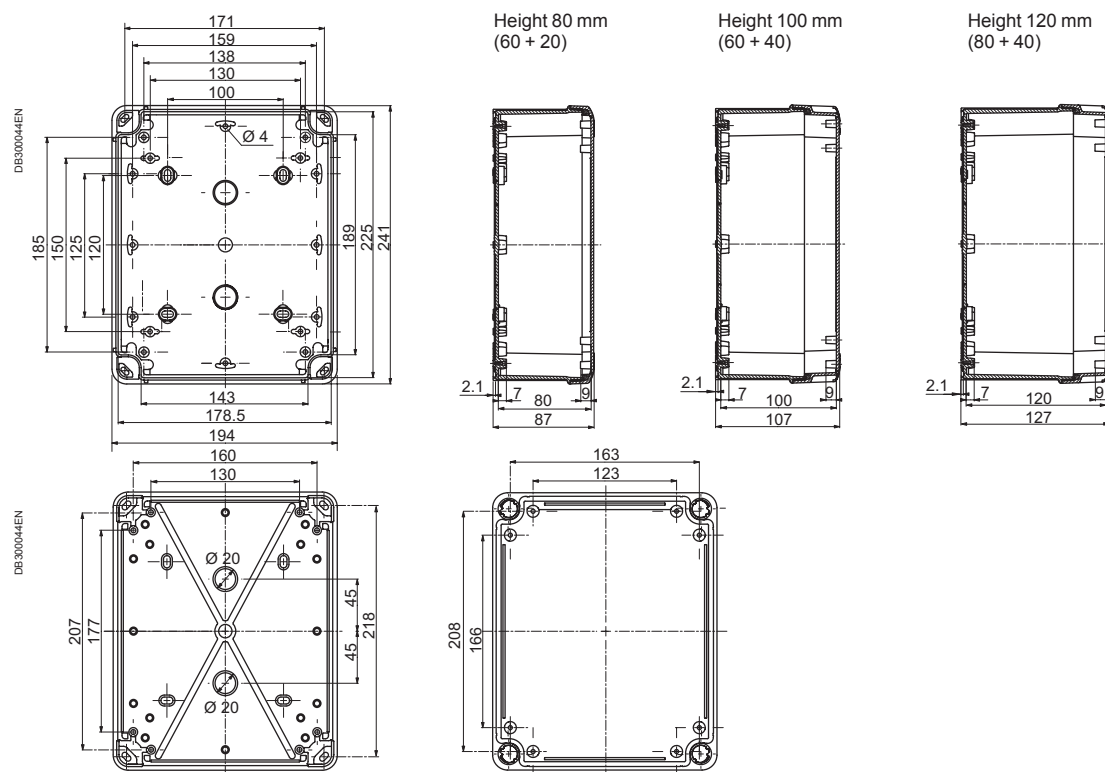


Surface mounted boxes

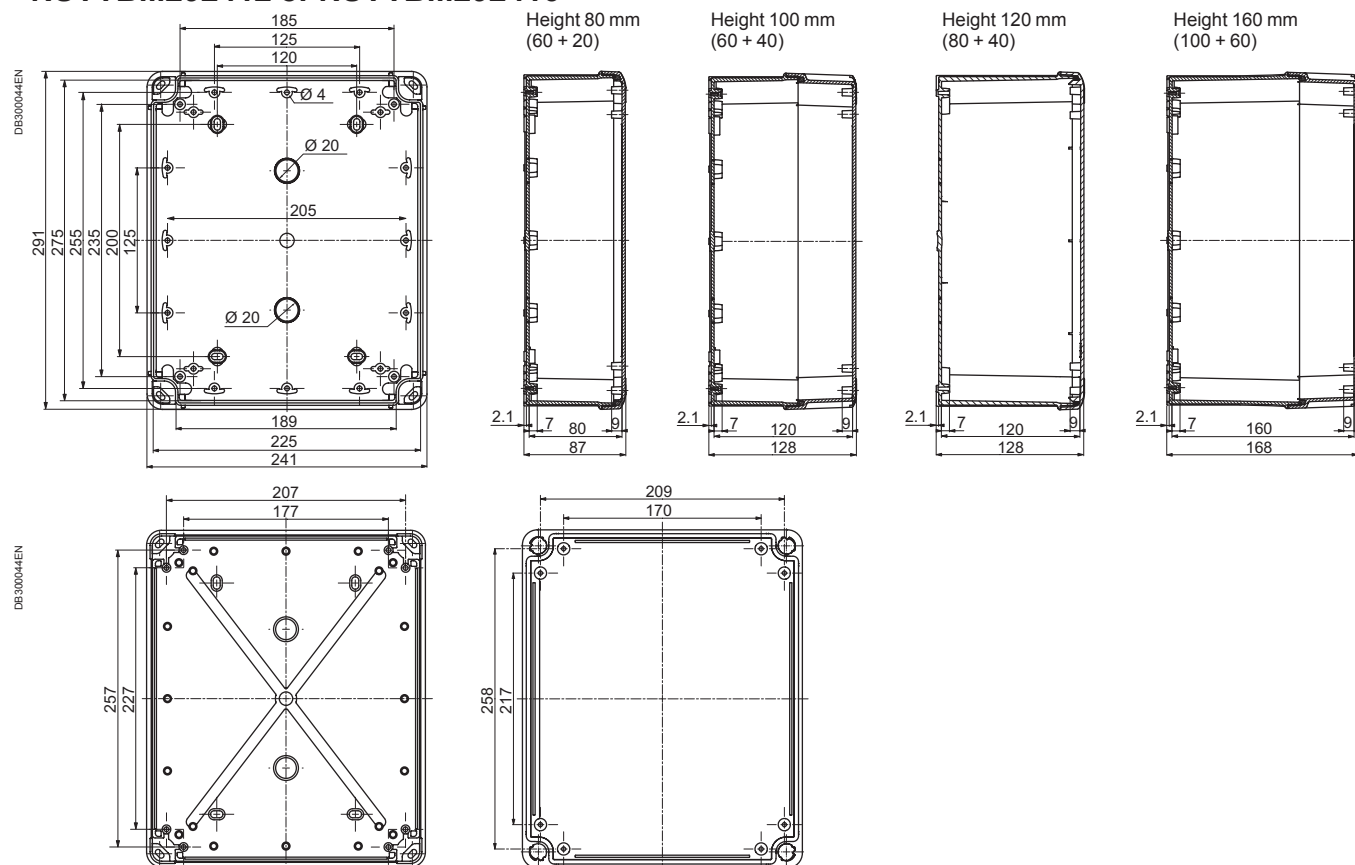
Thalassa boxes

Dimensions

Box of 241 x 194 x 87, 107 or 127 mm (external dimensions) NSYTB...24198, NSYTB...241910 or NSYTB...241912



Box of 291 x 241 x 88, 128 or 168 mm (external dimensions) NSYTB...29248, NSYTB...292412 or NSYTB...292416



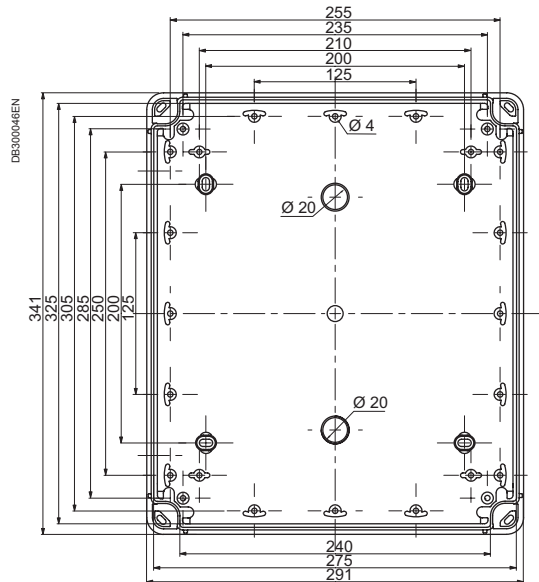


Surface mounted boxes

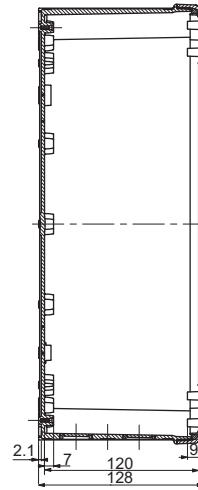
Thalassa boxes

Dimensions

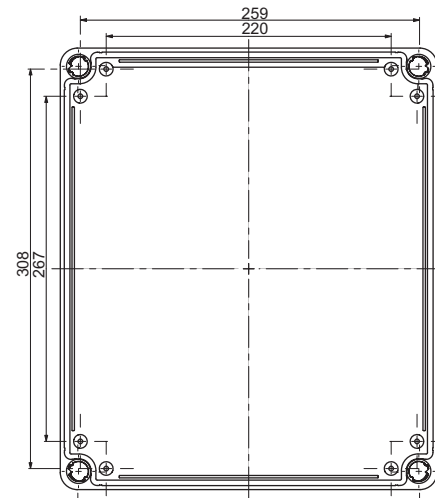
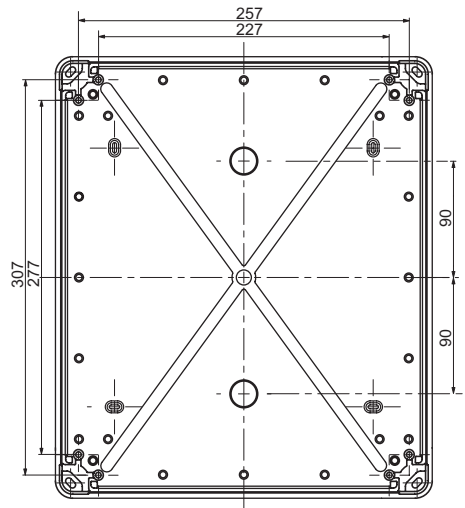
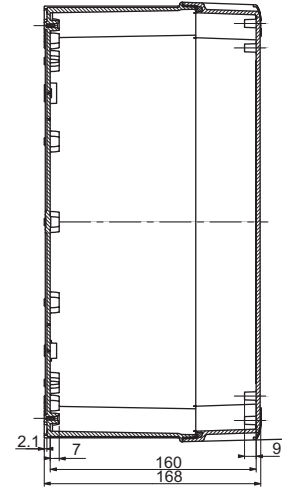
Box of 341 x 291 x 128 or 168 mm (external dimensions) NSYTB...342912 or NSYTB...342916



Height 120 mm
(80 + 40)



Height 160 mm
(100 + 60)



Properties of the plastic materials

Mechanical, electrical, physical and fire-resistance properties

Plastic materials generally used to manufacture our products:

- ABS
- Polycarbonate
- PVC (polyvinyl chloride)
- Bayblend® = PC + ABS
- Polyester reinforced with fibreglass
- Altuglas
- Polypropylene
- Polystyrene
- Polyamide 6 and 12
- SBS.

Specifications	Standards	Units	ABS	Polycarbonate	PVC	Bayblend®	Polyester	SBS
Mechanical properties								
Tensile strength	ISO 257	MPa	44	> 65	45	35	85	5
Tensile strain	ISO 527	%	12	> 110	120 to 150	40	0	600
Impact resistance	ISO 179	kJ/m²	125	No breakage	25	No breakage	60	No breakage
Notching resistance	ISO 179	kJ/m²	19	25	20	25	50	-
Electrical properties								
Stress point	IEC 60112	-	-	250-300	> 600	> 550	> 600	-
Surface strength	IEC 60093	ohm	1015	> 1015	> 1013	> 1014	≥1012	> 1013
Dielectric strength	IEC 60243	kV/mm	16.5	> 30	30	24	18-20	20
Specific resistivity	IEC 60093	ohm³cm	1015	> 1016	≥ 1015	1016	≥ 1012	> 1016
Physical properties								
Softening temperature (Vicat B)	ISO 306	°C	95	145-150	79-80	115	(1)	80
Temperature resistance	-	°C	-40...+90	-50...+125	-20...+65	-35...+90	-50...+150	-40...+120
Water absorption	ISO 62	%	0.2 - 0.45	0.15	< 0.1	0.2	0.2	-
Specific weight	ISO 1183	kg/dm³	1.04	1.21	1.4	1.12	1.85	0.3 in 24 h
Fire resistance								
Oxygen index	ISO 4589	%	19	26	45-50	22	24.4	18
Glow wire resistance, 2 mm	IEC 60695-2	°C	650	960	960	750	960	750° (1.5 mm)
Glow wire resistance, 3 mm	IEC 60695-2	°C	650	960	960	750	960	NA

(1) No softening of the polyester.

Specifications	Standards	Units	Altuglas	Polypropylene	Polystyrene	Polyamide 6	Polyamide 12
Mechanical properties							
Tensile strength	ISO 257	MPa	30	35	24	40	30
Tensile strain	ISO 527	%	5	400	36	200	300
Impact resistance	ISO 179	kJ/m²	20	20	63	No breakage	No breakage
Notching resistance	ISO 179	kJ/m²	3	5	50	31.2	15
Electrical properties							
Stress point	IEC 60112	-	-	-	KB175	KB175	KB180
Surface strength	IEC 60093	ohm	≥ 1014	-	> 1013	1012	5 x 1010
Dielectric strength	IEC 60243	kV/mm	13-15	20	≤ 40	23	55
Specific resistivity	IEC 60093	ohm³cm	> 1015	> 1016	> 1015	1011	3 x 1011
Physical properties							
Softening temperature (Vicat B)	ISO 306	°C	120-122	75 (vicat A)	79	230	140
Temperature resistance	-	°C	-20...+80	-10...+80	-15...+60	-20...+100	-50...+125
Water absorption	ISO 62	%	< 0.5	0.1 in 24 h	0.1 in 24 h	1.6	1.5
Specific weight	ISO 1183	kg/dm³	1.18	0.91	1.06	1.14	1.03
Fire resistance							
Oxygen index	ISO 4589	%	18.5	18	18	24	22
Glow wire resistance, 2 mm	IEC 60695-2	°C	-	650	650	750	650
Glow wire resistance, 3 mm	IEC 60695-2	°C	960	650	650	850	650

Properties of the plastic materials

Resistance to chemical agents

The table shows:

- The concentration of the chemical agent in %; sat = saturation
- The resistance of the material:
+ : Resistant
O : Limited resistance
- : Not resistant.

Plastic materials generally used to manufacture our products:

- ABS
- Polycarbonate
- PVC (polyvinyl chloride)
- Bayblend® = PC + ABS
- Polyester
- Altuglas
- Polypropylene
- Polystyrene
- Polyamide 6 and 12
- SBS.

Resistance to	ABS	Poly-carbonate	PVC	Bayblend®	Polyester	Altuglas	Poly-propylene	Poly-styrene	Poly-amide 6	Poly-amide 12	SBS
Acetone	—	—	—	—	—	O	100 +	—	100 +	+	+
Hydrochloric acid	15 +	10 +	30 +	20 +	30 +	sat +	10 +	O	10 —	10 +	10 +
Citric acid	—	10 +	sat +	10 +	100 +	sat +	sat +	+	10 O	+	10 +
Lactic acid	80 +	10 +	90 +	10 —	100 +	20 +	90 +	O	50 O	+	sat +
Nitric acid	30 +	10 + 100 —	50 +	10 +	20 +	10 + 100 —	25/ 50	O	2 O	—	50 +
Phosphoric acid	85 +	100 +	sat +	+	100 +	10 + 95 —	sat +	O	2 O	50 +	+
Sulphuric acid	50 +	50 + 100 —	96 +	30 +	70 +	30 +	96 +	O	3 —	10 +	96 +
Alcohol	O	96 +	96 +	—	50 O	50 O	96 +	+	96 O	96 +	+
Pure aniline	O	—	100 —	—	O	—	100 +	—	100 O	100 O	—
Benzene	+	100 —	—	+	—	O	100 O	—	100 +	+	—
Liquid bromine	—	100 —	—	—	—	—	100 —	—	—	100 —	—
Liquid chlorine	—	—	100 —	—	sat +	—	100 —	—	100 O	—	50 +
Sea water	+	100 +	100 +	+	100 +	100 +	—	100 +	—	100 +	sat +
Petrol	+	100 +	100 O	—	100 +	100 O	—	—	100 +	+	—
Ether	—	100 O	100 —	—	100 O	+	—	—	100 +	100 +	—
Hexane	O	+	O	O	—	—	100 +	—	100 +	100 +	—
Oil and greases	+	100 +	100 +	O	100 +	100 O	100 +	—	+	100 +	—
Aromatic hydrocarbon	O	—	—	—	—	+	—	—	—	+	—
Fuel oil	O	100 O	100 +	—	100 +	100 —	100 +	—	100 +	100 +	—
Naphthalene	—	—	100 O	—	100 +	100 —	100 +	—	100 +	100 +	—
Nitrobenzene	—	—	100 —	—	—	—	100 O	—	—	O	—
Phenol	—	—	sat O	—	20 O	—	sat +	—	—	—	10 O
Mineral salts	—	+	+	+	+	+	+	—	—	+	+
Iodine solution	—	O	—	+	—	—	—	—	+	—	—
Toluene	—	—	100 —	—	+	O	100 O	—	100 +	100 +	—
Trichloroethylene	—	—	100 —	—	—	—	100 O	—	100 —	100 O	—
Urea	—	sat +	sat +	+	—	—	sat +	—	10 +	sat +	sat O

For other chemical agents, please contact us.

All this information is taken from the best sources and provided for information purposes only, with no commitment on our behalf.



1

13934 18

E

ENN02290 20
ENN05001 11, 14
ENN05002 11, 14
ENN05003 11, 14
ENN05004 11, 14
ENN05005 11, 14
ENN05007 11, 14
ENN05010 11, 14
ENN05013 11, 14
ENN05017 11, 14
ENN05019 11, 14
ENN05021 11, 14
ENN05022 11, 14
ENN05023 11, 14
ENN05024 11, 14
ENN05025 11, 14
ENN05032 11, 14
ENN05044 10, 15
ENN05045 10, 15
ENN05047 10, 15
ENN05050 10, 15
ENN05053 10, 15
ENN05057 10, 15
ENN05059 10, 15
ENN05064 10, 15
ENN05065 10, 15
ENN05072 11, 14
ENN05082 10, 15
ENN05083 10, 15
ENN05084 10, 15
ENN05085 10, 15
ENN05087 10, 15
ENN05090 10, 15
ENN05093 10, 15
ENN05097 10, 15
ENN05099 10, 15
ENN05121 14
ENN05124 14
ENN05125 14
ENN05142 14
ENN05164 11, 16
ENN05165 11, 16
ENN05167 11, 16
ENN05174 10, 16
ENN05175 10, 16
ENN05177 10, 16
ENN05204 11, 14
ENN05205 11, 14
ENN05264 11, 16
ENN05265 11, 16
ENN05267 11, 16
ENN08131 18
ENN08132 18
ENN08162 18
ENN08167 18
ENN08241 19
ENN08271 20
ENN08276 20
ENN48861 18

I

IMT34000 19, 29
IMT34001 19, 29
IMT34002 19, 29
IMT34003 19, 29
IMT34005 19, 29
IMT34007 19, 29
IMT34009 19, 29
IMT36089 19
IMT36150 17
IMT36151 17
IMT36152 17
IMT36153 17
IMT36154 17

IMT36155 17
IMT36156 17
IMT36157 17
IMT36158 17
IMT36159 17
IMT36160 17
IMT36161 17
IMT36162 17
IMT36163 17
IMT36164 17
IMT36165 17
IMT36166 17
IMT36167 17
IMT36168 17
IMT36169 17
IMT36170 17
IMT36171 17
IMT36172 18
IMT36173 18
IMT36179 18
IMT36180 18
IMT36181 18
IMT36182 18
IMT36183 18
IMT36184 18
IMT36185 18
ISM71071 18
ISM71072 18
ISM71073 18
ISM71074 18
ISM71501 17
ISM71502 17
ISM71503 17
ISM71504 17
ISM71505 17
ISM71506 17

N

NSYAEDH20TB 30
NSYAEDH40TB 30
NSYAEDKTB 28
NSYAEDS20TB 28
NSYAEDS40TB 28
NSYAEDS60TB 28
NSYAEDSB320TB 28
NSYAEDSB520TB 28
NSYAEDST620TB 28
NSYAEDST820TB 28
NSYAEFTB 18, 30
NSYAMFEP154TB 32
NSYAMFEP204TB 32
NSYAMFEP304TB 32
NSYAMFESTB 32
NSYAMFET154TB 32
NSYAMFET204TB 32
NSYAMFET304TB 32
NSYAMFSTB 31, 32
NSYAMPA1916TB 31
NSYAMPA2419TB 31
NSYAMPA2924TB 31
NSYAMPA3429TB 31
NSYAMPM1916TB 31
NSYAMPM2419TB 31
NSYAMPM2924TB 31
NSYAMPM3429TB 31
NSYAMRD11155TB 20, 32
NSYAMRD11357TB 20, 32
NSYAMRD16155TB 20, 32
NSYAMRD16357TB 20, 32
NSYAMRD19155TB 20, 32
NSYAMRD19357TB 20, 32
NSYAMRD24155TB 20, 32
NSYAMRD24357TB 20, 32
NSYAMRD29155TB 20, 32
NSYAMRD29357TB 20, 32
NSYAMRD34155TB 20, 32
NSYAMRD34357TB 20, 32
NSYAMRD243515TB 32
NSYAMRD293515TB 32
NSYAMRD343515TB 32
NSYCAG12LPH1 28
NSYCAG12LPH2 28
NSYTBP775 24

NSYTBP885	24	NSYTRR42PE	29
NSYTBP1176	24	NSYTRV22	29
NSYTBP1397	24	NSYTRV22BL	29
NSYTBP1397T	24	NSYTRV22PE	29
NSYTBP11116	24	NSYTRV44	29
NSYTBP16128	24	NSYTRV44BL	29
NSYTBP16128T	24	NSYTRV44PE	29
NSYTBP19128	24		
NSYTBP19128T	24		
NSYTBP19168	24		
NSYTBP19168T	24		
NSYTBP24198	24		
NSYTBP24198T	24		
NSYTBP29248	24		
NSYTBP29248T	24		
NSYTBP191210H	24		
NSYTBP191210HT	24		
NSYTBP191610H	24		
NSYTBP191610HT	24		
NSYTBP241910	24		
NSYTBP241910H	24		
NSYTBP241910HT	24		
NSYTBP241910T	24		
NSYTBP241912H	24		
NSYTBP241912HT	24		
NSYTBP292412	24		
NSYTBP292412H	24		
NSYTBP292412HT	24		
NSYTBP292412T	24		
NSYTBP292416H	24		
NSYTBP292416HT	24		
NSYTBP342912	24		
NSYTBP342912T	24		
NSYTBP342916H	24		
NSYTBP342916HT	24		
NSYTBS775	24		
NSYTBS885	24		
NSYTBS1176	24		
NSYTBS1179H	24		
NSYTBS1397	24		
NSYTBS1397T	24		
NSYTBS11116	24		
NSYTBS16128	24		
NSYTBS16128T	24		
NSYTBS19128	24		
NSYTBS19128T	24		
NSYTBS19168	24		
NSYTBS19168T	24		
NSYTBS24198	24		
NSYTBS24198T	24		
NSYTBS29248	24		
NSYTBS29248T	24		
NSYTBS111113H	24		
NSYTBS191210H	24		
NSYTBS191210HT	24		
NSYTBS191610H	24		
NSYTBS191610HT	24		
NSYTBS241910	24		
NSYTBS241910H	24		
NSYTBS241910HT	24		
NSYTBS241910T	24		
NSYTBS241912H	24		
NSYTBS241912HT	24		
NSYTBS292412	24		
NSYTBS292412H	24		
NSYTBS292412HT	24		
NSYTBS292412T	24		
NSYTBS292416H	24		
NSYTBS292416HT	24		
NSYTBS342912	24		
NSYTBS342912T	24		
NSYTBS342916H	24		
NSYTBS342916HT	24		
NSYTRP22	29		
NSYTRP22BL	29		
NSYTRP22PE	29		
NSYTRP42	29		
NSYTRP42BL	29		
NSYTRP42PE	29		
NSYTRR22	29		
NSYTRR22BL	29		
NSYTRR22PE	29		
NSYTRR42	29		
NSYTRR42BL	29		

W

WDE0000010	19
------------------	----

X

XALE2	25
XALE3	25
XALE2141	25
XALE3255	25
XALEK1702	25







Life Is On



Schneider Electric Industries SAS

35, rue Joseph Monier - CS 30323
F-92506 Rueil-Malmaison - FRANCE
Phone: + 33 (0) 1 41 29 70 00
Fax: + 33 (0) 1 41 29 71 00
www.schneider-electric.com

01-2016
Document Number LSB02647EN

©2015 Schneider Electric. All Rights Reserved.
All trademarks are owned by Schneider Electric Industries SAS or its affiliated companies.

This document has been
printed on recycled paper

