


## Technical data

## Home distribution board DIDO-E

## Technical data

|                          |   |
|--------------------------|---|
| Degree of protection     | IP 40*  |
| Colour                   | white   |
| Double insulation        |  |
| Standard                 | IEC 62208, IEC 60670-1, IEC 60670-24  |
| Installation temperature | -25° / +60°C  |
| Glow wire test           | 650°C   |

\*IP 30 for EC 1+1, 3+1, 3+2, ECGxxMEDIA

Number of N - PE terminals (1,5...16mm<sup>2</sup>):

|                 |      |              |
|-----------------|------|--------------|
| ECT/ECM4PT/PO   | 2x4  | 4 PE / 4 N   |
| ECT/M8PT/PO     | 2x8  | 8 PE / 8 N   |
| ECT/M12PT/PO    | 2x10 | 10 PE / 10 N |
| ECT/M18PT/PO    | 2x13 | 13 PE / 13 N |
| ECT/M24PT/PO    | 2x13 | 13 PE / 13 N |
| ECT/M36PT/PO    | 2x15 | 15 PE / 15 N |
| ECT48PT/PO      | 2x20 | 20 PE / 20 N |
| ECT/M 2x18PT/PO | 2x15 | 15 PE / 15 N |
| ECT/M 3x18PT/PO | 2x25 | 25 PE / 25 N |
| ECT 4x18PT/PO   | 2x30 | 30 PE / 30 N |
| ECT 1x24PT/PO   | 2x13 | 13 PE / 13 N |
| ECG14           | 2x10 | 10 PE / 10 N |
| ECG28           | 2x13 | 13 PE / 13 N |
| ECG42           | 2x15 | 15 PE / 15 N |
| ECG56           | 2x20 | 20 PE / 20 N |
| ECG70           | 2x30 | 30 PE / 30 N |
| EC 1+1          | -    |              |
| EC 3+1          | -    |              |
| EC 3+2          | 2x4  | 4 PE / 4 N   |

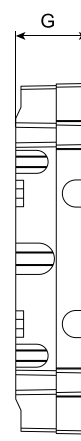
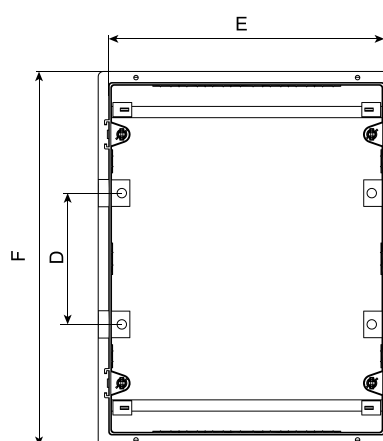
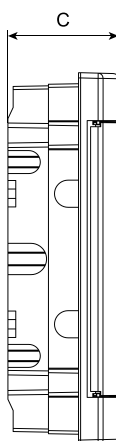
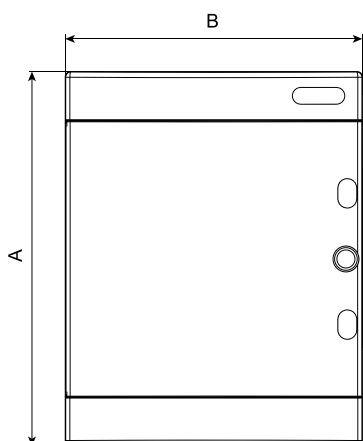
- ECG14, ECG28, ECG42 have 1 additional free space to build in an extra PST-UNI terminal.

- ECG56 and ECG70 have no extra space for PST-UNI terminals.

- Double insulation not valid for ECG MEDIA

## Flush mounted distribution board

| type                | Dimensions |        |        |        |        |        |       | Max. allowed power losses when Max. number of devices are installed | Static load |
|---------------------|------------|--------|--------|--------|--------|--------|-------|---|-------------|
|                     | A          | B      | C      | D      | E      | F      | G     | Pde   |             |
| ECM4PT/ECM4PO       | 232 mm     | 139 mm | 99 mm  | -      | 123 mm | 216 mm | 69 mm | >10 W   | 520 g       |
| ECM8PT/ECM8PO       | 232 mm     | 211 mm | 99 mm  | -      | 201 mm | 212 mm | 68 mm | >16 W   | 1040 g      |
| ECM12PT/ECM12PO     | 232 mm     | 283 mm | 106 mm | -      | 273 mm | 212 mm | 68 mm | >25 W   | 1560 g      |
| ECM18PT/ECM18PO     | 232 mm     | 392 mm | 106 mm | -      | 382 mm | 212 mm | 68 mm | >25 W   | 2340 g      |
| ECM24PT/ECM24PO     | 357 mm     | 283 mm | 106 mm | 125 mm | 273 mm | 336 mm | 68 mm | >30 W   | 1560 g      |
| ECM36PT/ECM36PO     | 482 mm     | 283 mm | 106 mm | 125 mm | 273 mm | 462 mm | 68 mm | >30 W   | 1560 g      |
| ECM2x18PT/ECM2x18PO | 357 mm     | 392 mm | 106 mm | 125 mm | 382 mm | 336 mm | 68 mm | >30 W   | 2340 g      |
| ECM3x18PT/ECM3x18PO | 522 mm     | 392 mm | 106 mm | 125 mm | 382 mm | 502 mm | 68 mm | >35 W   | 2340 g      |

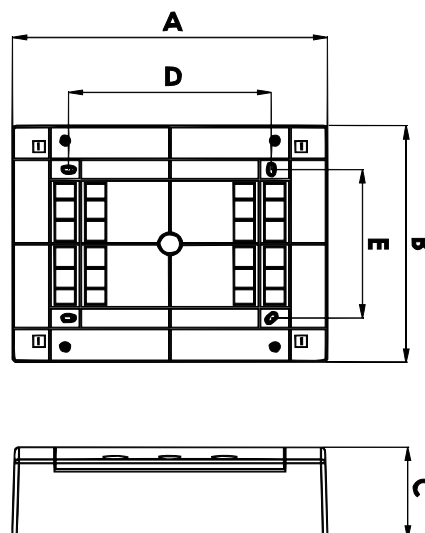


## Surface mounted distribution board

| type                | Dimensions** |        |        |        |        | Pde* | Static load |
|---------------------|--------------|--------|--------|--------|--------|------|-------------|
|                     | A            | B      | C      | D      | E      |      |             |
| ECT4PT/ECT4PO       | 235 mm       | 143 mm | 98 mm  | 127 mm | 46 mm  | 10 W | 520 g       |
| ECT8PT/ECT8PO       | 236 mm       | 215 mm | 102 mm | 107 mm | 120 mm | 16 W | 1040 g      |
| ECT12PT/ECT12PO     | 236 mm       | 287 mm | 112 mm | 107 mm | 180 mm | 25 W | 1560 g      |
| ECT18PT/ECT18PT     | 236 mm       | 396 mm | 112 mm | 107 mm | 289 mm | 25 W | 2340 g      |
| ECT24PT/ECT24PO     | 361 mm       | 287 mm | 112 mm | 232 mm | 180 mm | 30 W | 1560 g      |
| ECT36PT/ECT36PO     | 485 mm       | 287 mm | 112 mm | 357 mm | 180 mm | 30 W | 1560 g      |
| ECT48PT/ECT48PO     | 652 mm       | 287 mm | 112 mm | 482 mm | 180 mm | 35 W | 1560 g      |
| ECT2x18PT/ECT2x18PO | 361 mm       | 396 mm | 112 mm | 232 mm | 289 mm | 30 W | 2340 g      |
| ECT3x18PT/ECT3x18PO | 526 mm       | 396 mm | 112 mm | 357 mm | 289 mm | 35 W | 2340 g      |
| ECT4x18PT/ECT4x18PO | 651 mm       | 396 mm | 112 mm | 357 mm | 289 mm | 40 W | 2340 g      |
| ECT1x24PT/ECT1x24PO | 236 mm       | 503 mm | 112 mm | 107 mm | 396 mm | 30 W | 2340 g      |

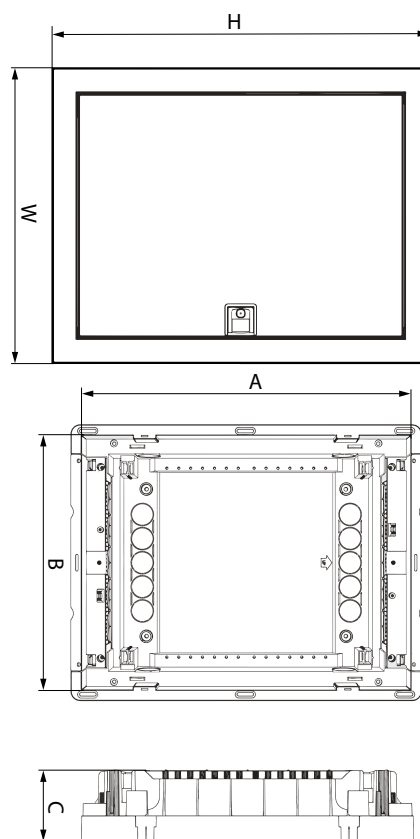
\* Max. allowed power losses when Max. number of devices are installed

\*\*Sizes are also valid for IT distribution boards DIDO-E MEDIA: ECT...MEDIA



## Flush mounted distribution board

| type  | Dimensions |        |       |        |        | Max. allowed power losses when Max. number of devices are installed<br>Pde |
|-------|------------|--------|-------|--------|--------|--|
|       | A          | B      | C     | H      | W      |  |
| ECG14 | 274 mm     | 306 mm | 87 mm | 317 mm | 346 mm | 31 W   |
| ECG28 | 399 mm     | 306 mm | 87 mm | 442 mm | 346 mm | 40 W   |
| ECG42 | 549 mm     | 306 mm | 87 mm | 592 mm | 346 mm | 50 W   |
| ECG56 | 673 mm     | 306 mm | 87 mm | 717 mm | 346 mm | 60 W   |
| ECG70 | 799 mm     | 306 mm | 87 mm | 842 mm | 346 mm | 70 W   |



## Surface mounted distribution board - IP30

| type   | Dimensions    | Number of modules |
|--------|---------------|-------------------|
| EC 1+1 | 137 x 51 x 57 | 1 (+1)            |
| EC 3+1 | 137 x 87 x 57 | 3 (+1)            |
| EC 3+2 | 97 x 155 x 57 | 3 (+2)            |

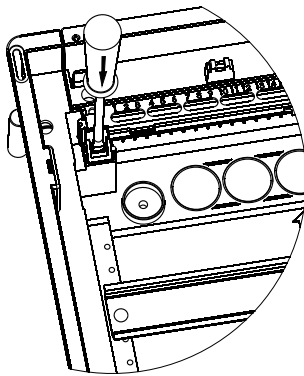
## ECG

|                 |  |
|-----------------|--|
| Material        | Acrylonitrile butadiene styrene                  |
| Color           | RAL9003  |
| Door            | Acrylonitrile butadiene styrene                  |
| Color           | Transparent & white                              |
| Glow wire test  | 650°C  |
| Terminal holder | Self extinguish material (Glow wire test: 960°C) |
| Temperature     | -25°C ... +60°C                                  |
| Rated voltage   | AC400V   |
| Standard        | IEC 62208, IEC 60670-1, IEC 60670-24             |
| Halogen free    | ✓  |

## ECG\_H

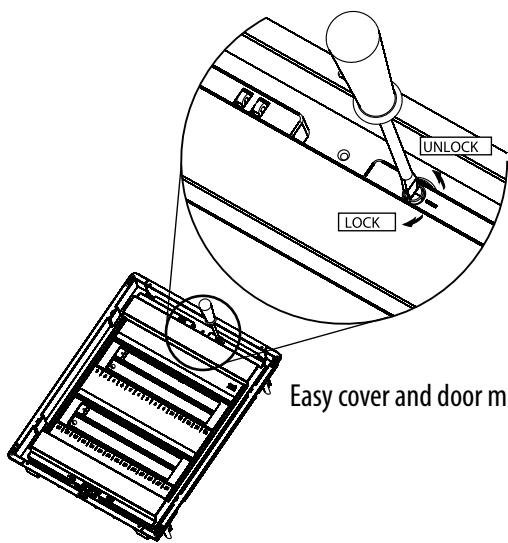
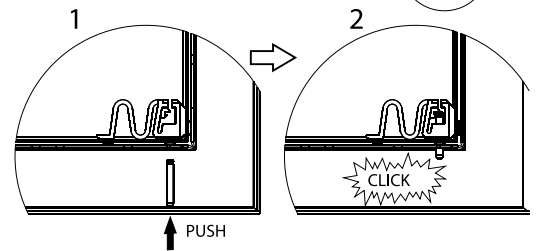
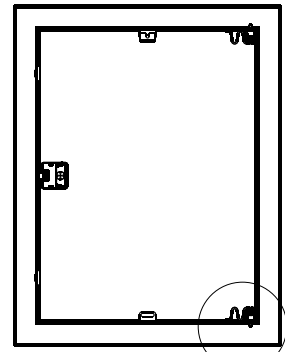
|                 |  |
|-----------------|--|
| Material        | Acrylonitrile butadiene styrene                  |
| Color           | RAL9003  |
| Door            | Metal  |
| Color           | white  |
| Glow wire test  | 850°C  |
| Terminal holder | Self extinguish material (Glow wire test: 960°C) |
| Temperature     | -25°C ... +60°C                                  |
| Rated voltage   | AC400V   |
| Standard        | IEC 62208, IEC 60670-1, IEC 60670-24             |
| Halogen free    | ✓  |

Advantages

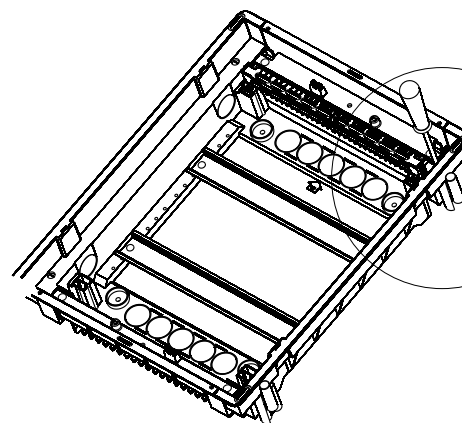


Easy terminal mounting

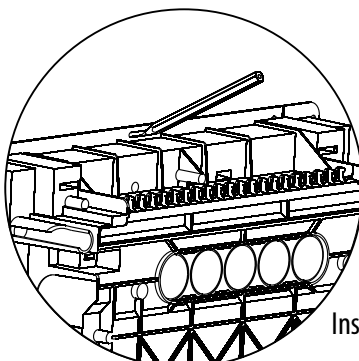
Left or right door mounting



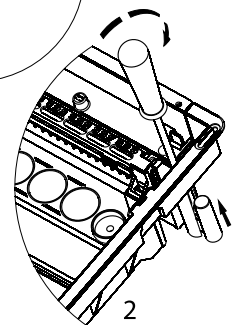
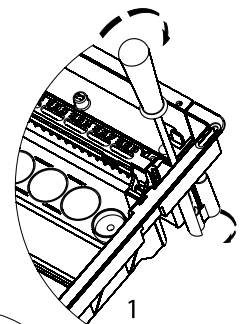
Easy cover and door mounting

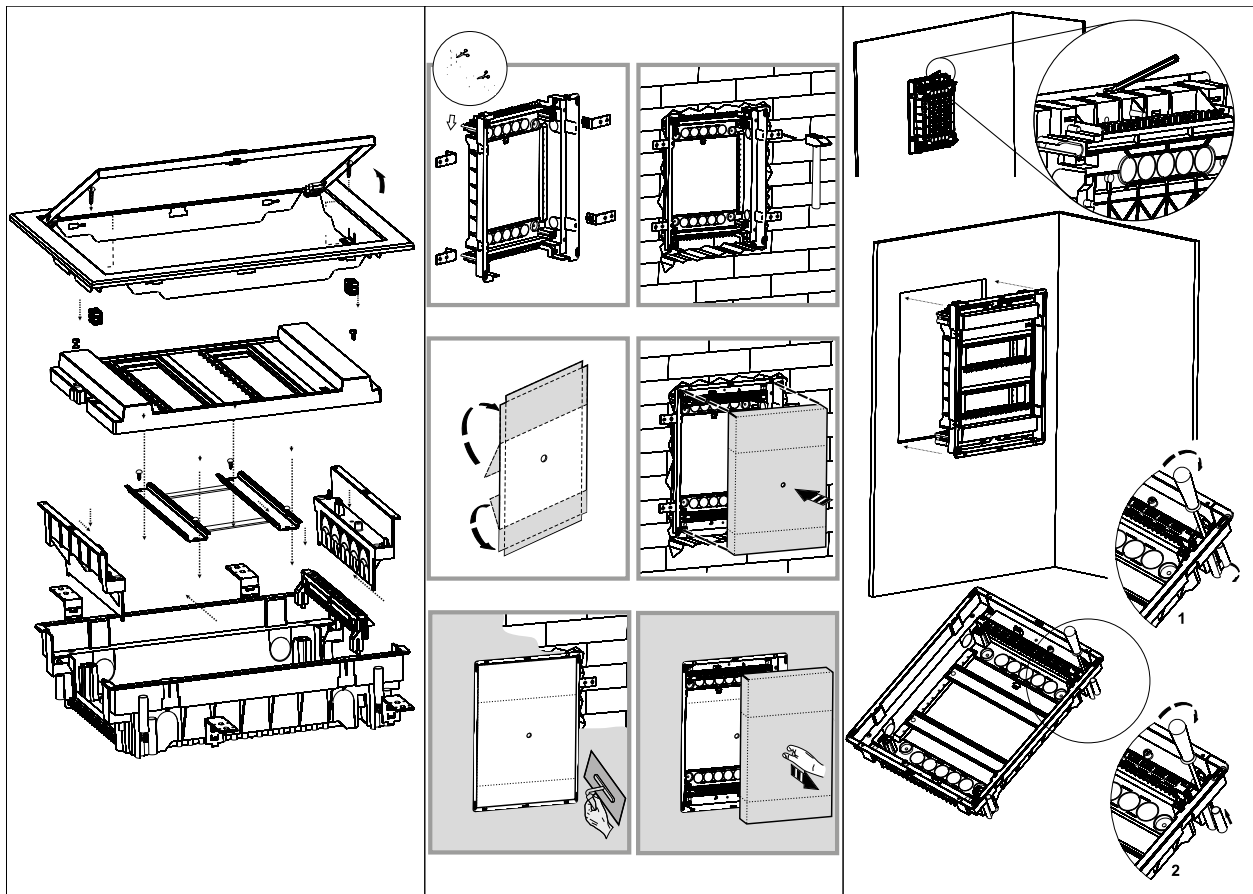


Holders for secure hollow wall installation



Installation marking slots for hollow walls





## Flush mounted distribution boards with metal doors (IP40) DIDO ERP

## Technical data

|                                       |                  |
|---------------------------------------|------------------|
| Protection against mechanical impacts | IK08             |
| Rated voltage                         | 500V             |
| Protection class                      | II               |
| Standard                              | PN-EN 62208:2011 |

Not for hollow or wooden walls, flush mounted material conforms 650°C glow wire test only!

## Assembly

