

SimPad PLUS

User Guide



Intended Use

- 5.5.1. The SimPad PLUS System is an easy to use wireless tool that performs relevant medical simulation training, including debriefing, in various user settings. With a large, intuitive touch screen, SimPad PLUS is a “Pick up and Play” experience, delivering simulation-based education, easily and efficiently.

There are two ways to control simulations: Automatic Mode and Manual Mode. This allows customized simulations to meet specific needs.

The SimPad PLUS System is compatible with a broad range of Laerdal products including manikins, patient simulators, and task trainers as well as standardized patients.

This User Guide describes operating instructions for the following models:

- SimPad PLUS
- Link Box PLUS

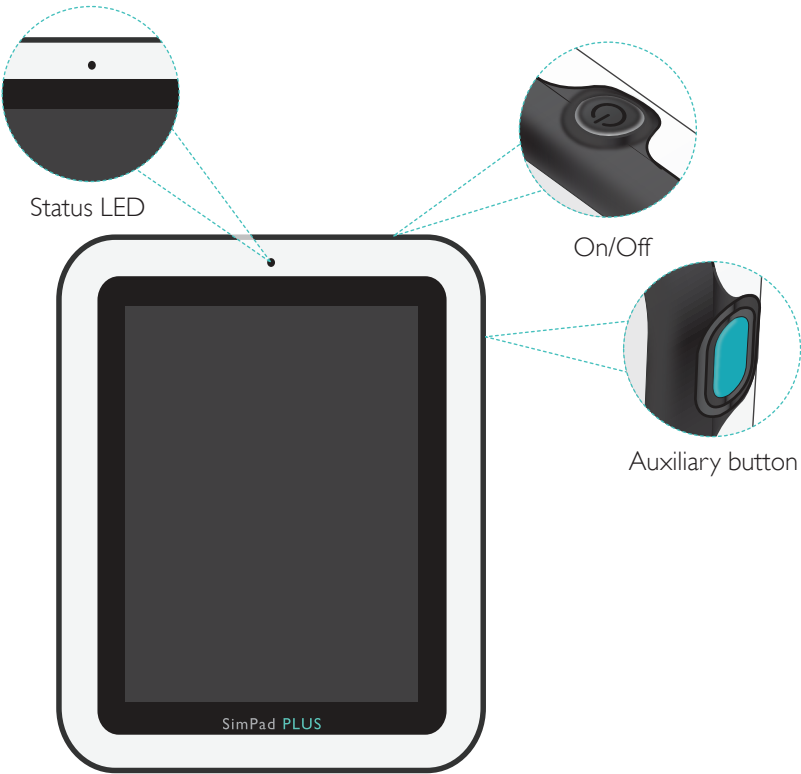


Notes

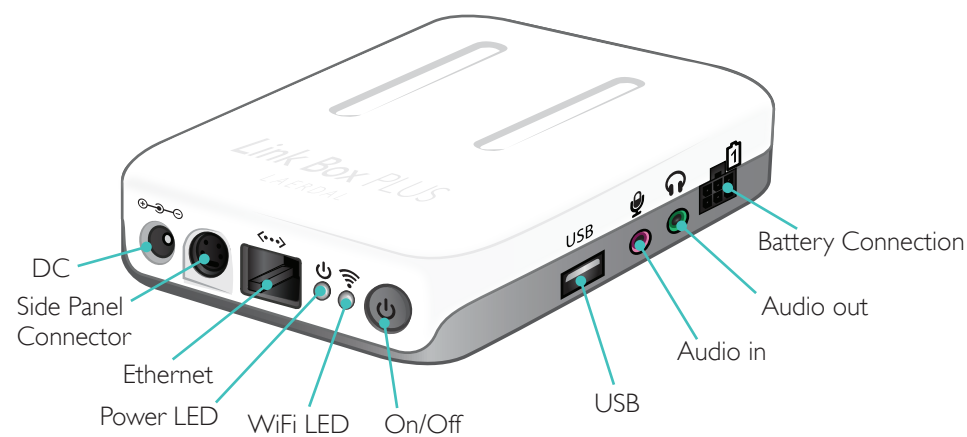
- *The products shown may vary in appearance and are subject to change.*
- *For further information and to access all product downloads visit [www.laerdal.com/SimPad PLUS](http://www.laerdal.com/SimPadPLUS).*

Intended Use	2
Contents	3
SimPad PLUS Overview	4
Link Box PLUS Overview	5
Link Box PLUS Setup	8
SimPad PLUS Setup	10
Link Box PLUS Setup	16
SimPad PLUS Setup	17
Home Screen Overview	18
Automatic Mode	19
Manual Mode	23
QCPR	31
Simulated Patient Monitor	36
SimCapture Setup	39
SimPad PLUS - Options	43
SimPad PLUS - Network	45
SimPad PLUS - Software	50
Laerdal Scenario Cloud	51
Sounds	54
SimPad PLUS - Laerdal Li-Ion Battery	56
Features	58

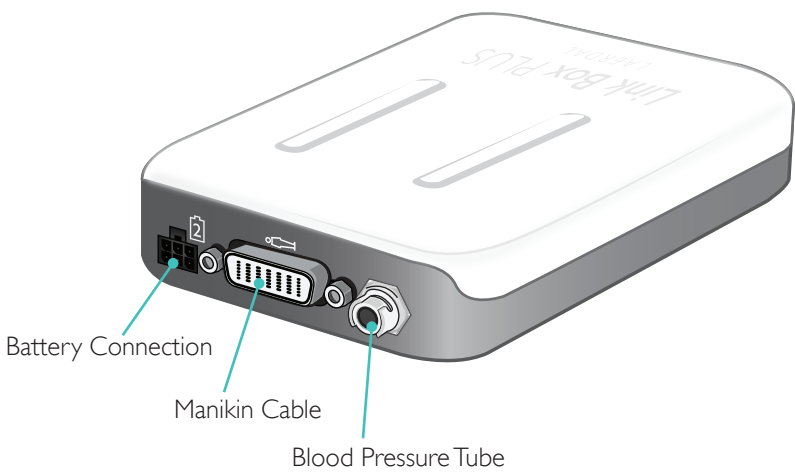
SimPad PLUS Overview



Front View

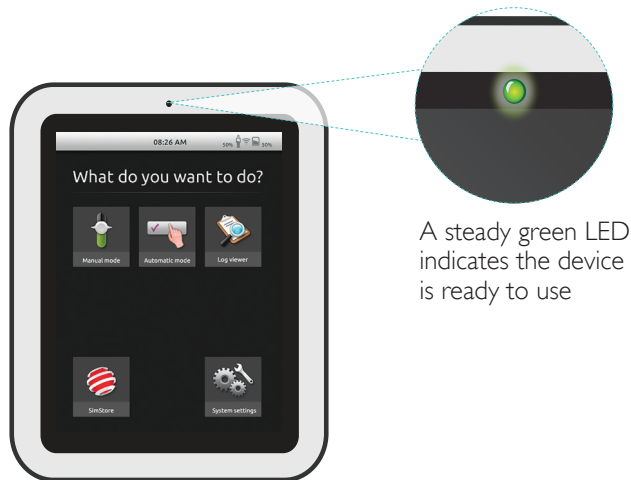
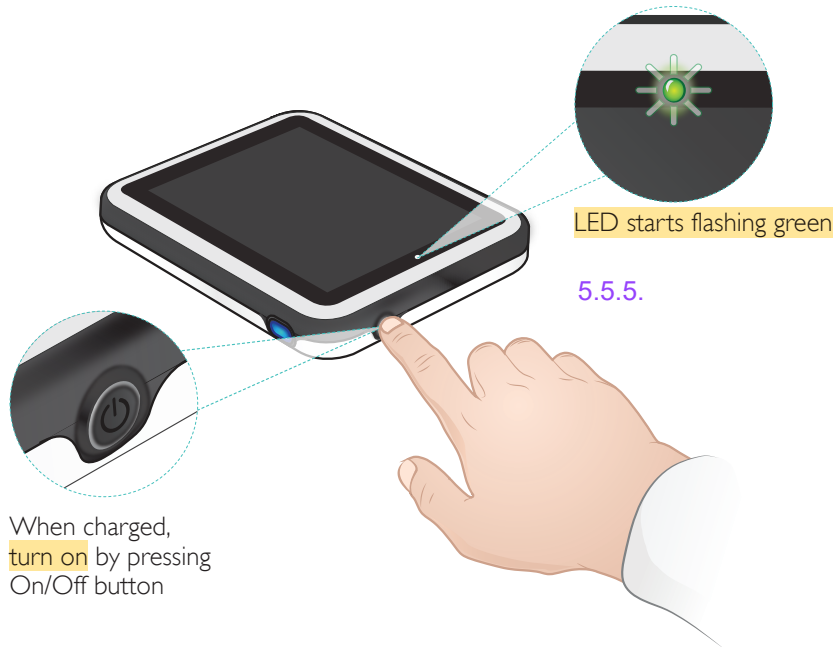


Back View



SimPad PLUS Setup

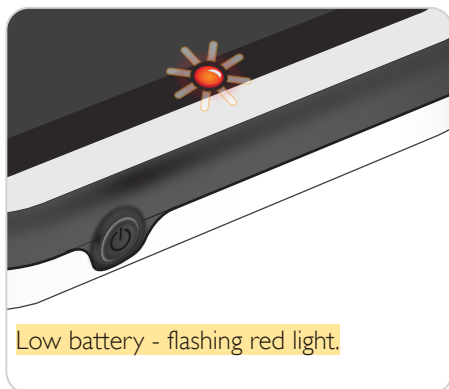
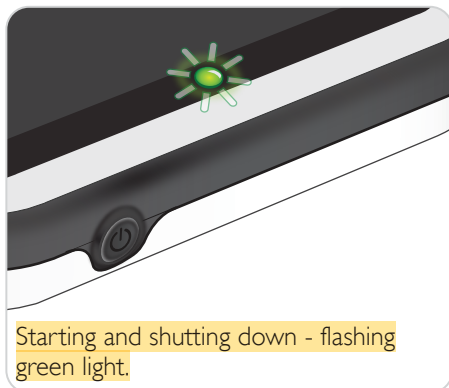
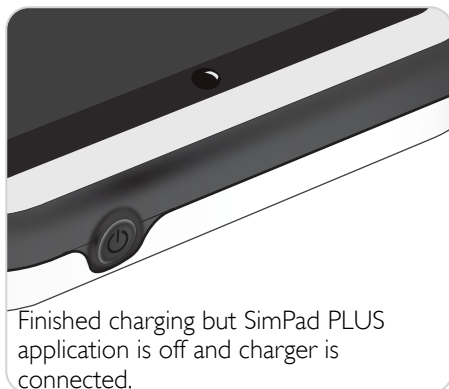
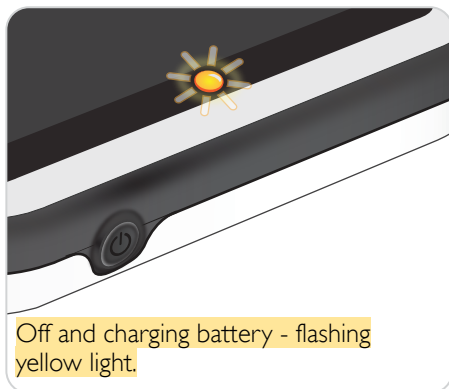
Turn On



 Note

Make sure to use the SimPad PLUS charger.

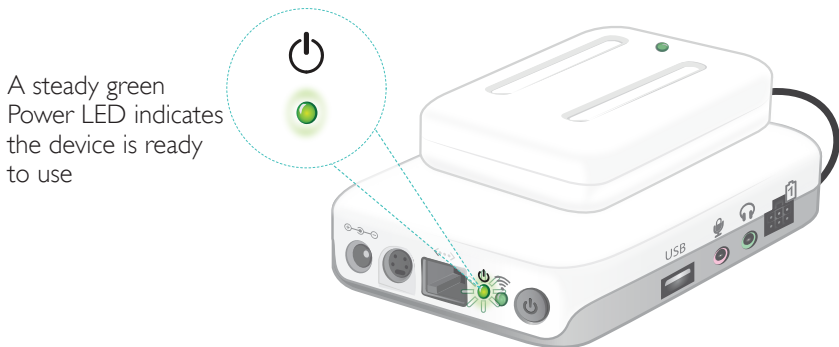
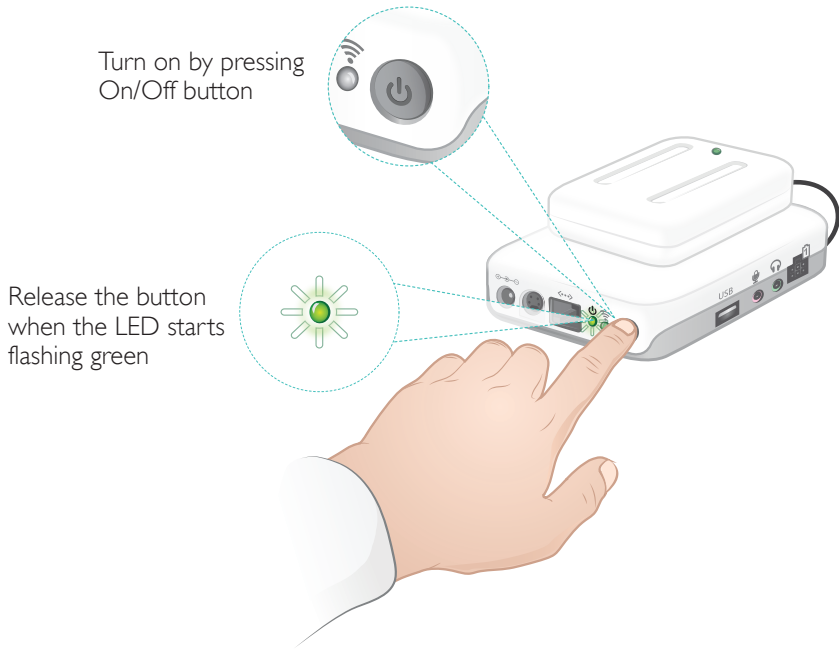
Status LED 5.5.5.



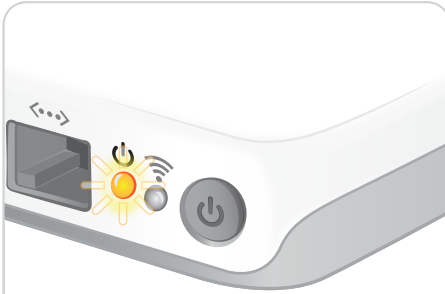
Link Box PLUS Setup

Turn On

Link Box PLUS can be located on the inside or the outside for the simulator. This illustration is of the simulators with the Link Box PLUS on the outside



Status Power LED



Charger connected but Link Box PLUS is turned off



Batteries charged - steady yellow light.



Starting and shutting down - flashing green light.



On - steady green light.



Error, needs service - steady red light.
Contact your local Laerdal representative.

SimPad PLUS Setup

Starting for the First Time

Follow the on-screen prompts to configure the device.



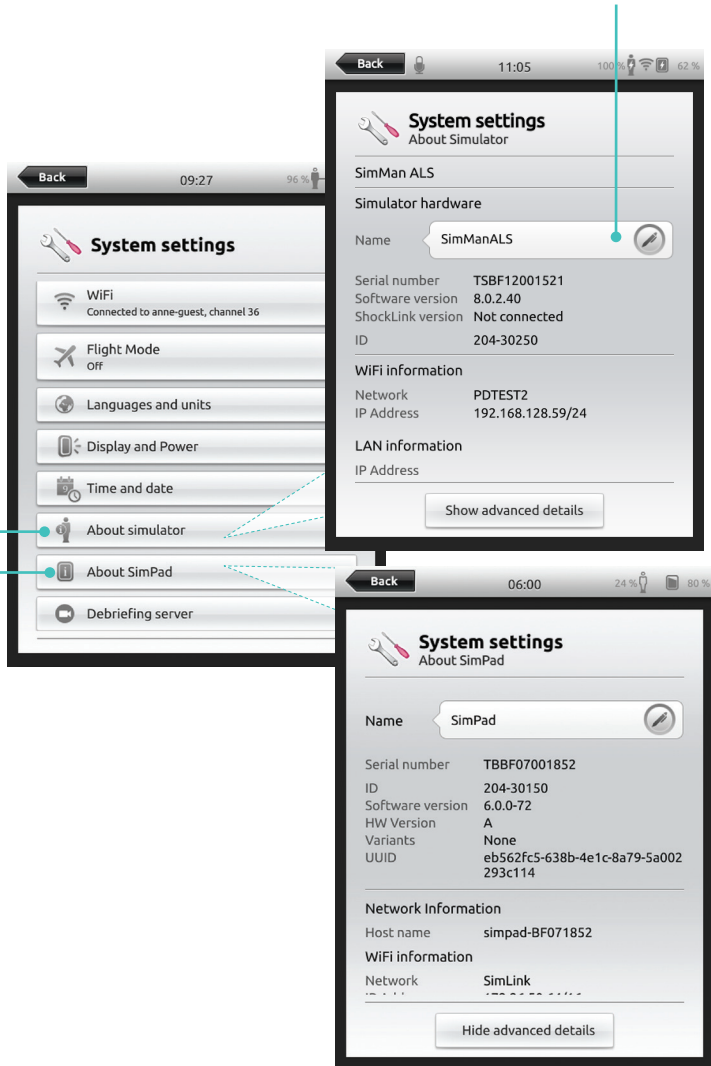
Configuration

Connect the simulator to the SimPad PLUS before configuration.

Enter a name for the Link Box PLUS (optional)

About Simulator

About SimPad



SimPad PLUS Setup

Setting Up A Password

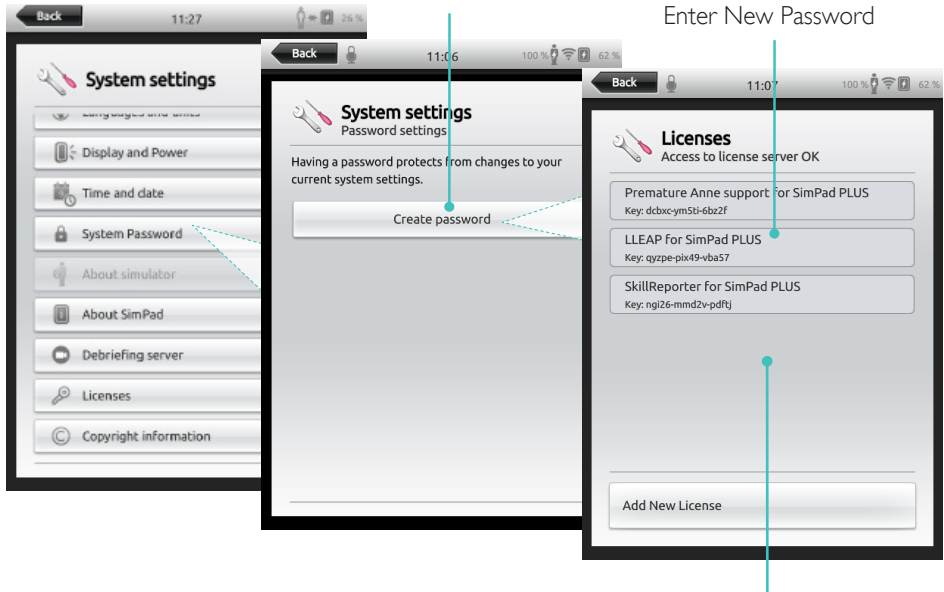


Note

Creating a new password will make future changes in System Settings require password authentication.

Select Create password

Enter New Password



Select Submit

Password Reset

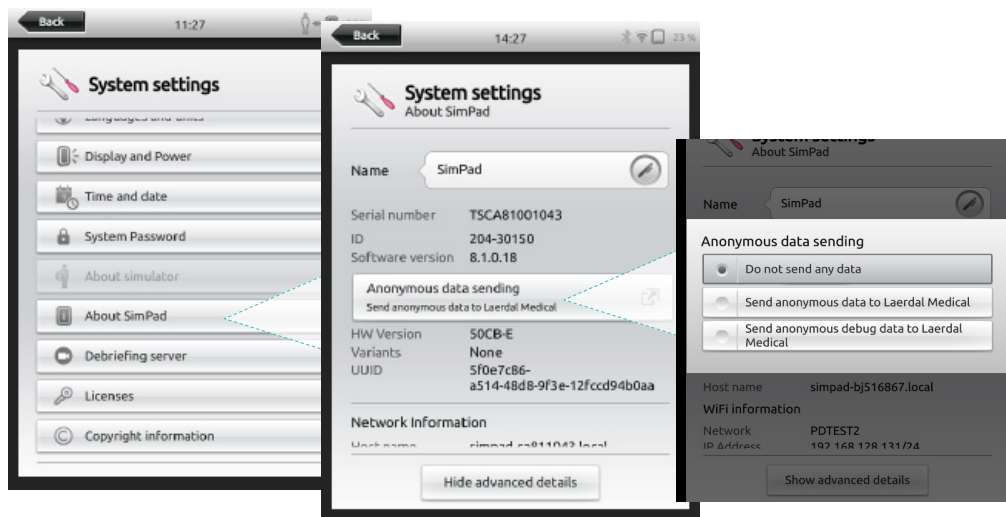


Note

To reset the password, the SimPad PLUS must be sent to Laerdal Technical Center.

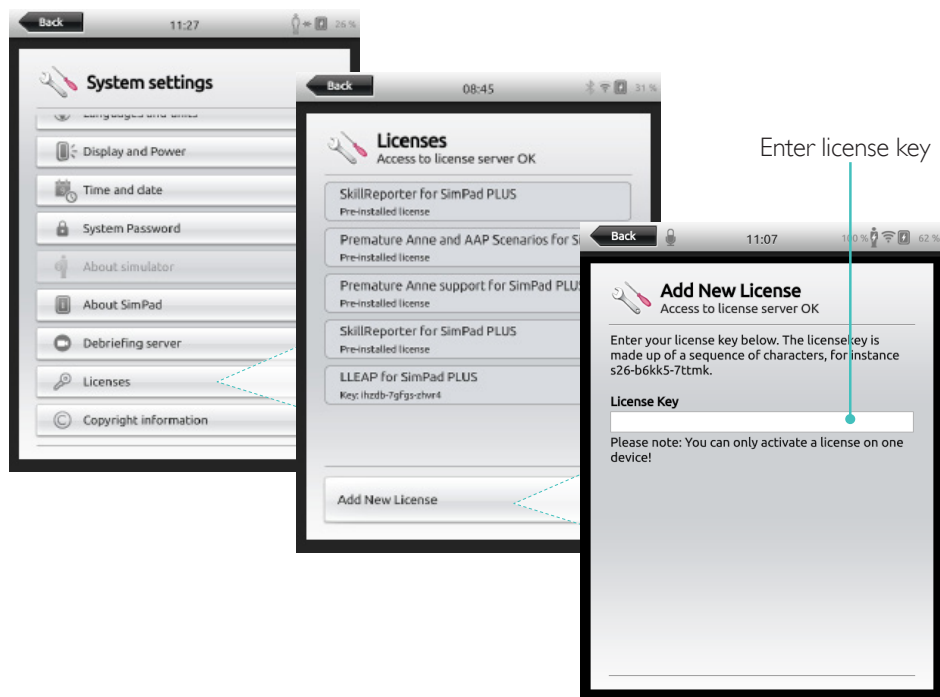
Anonymous Data Collection

Non-personal usage data can automatically be sent to Laerdal. When first turned on, the SimPad PLUS asks permission to share those data..The setting can later be changed in the System settings.

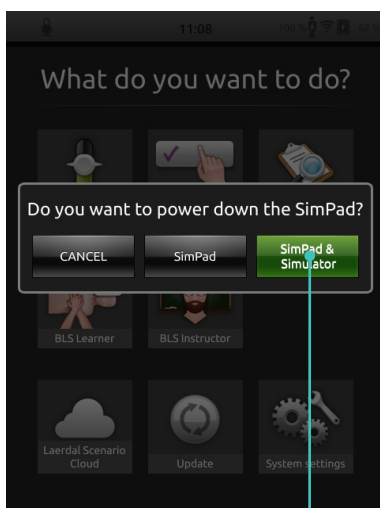
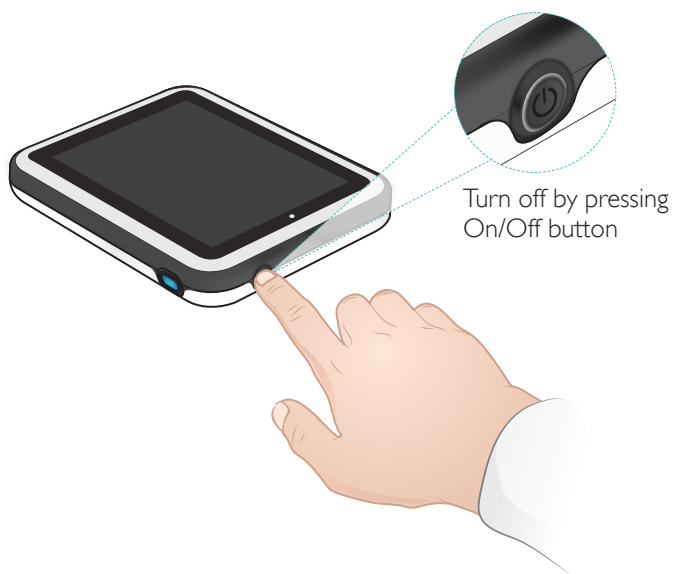


SimPad PLUS Setup

Add a New License



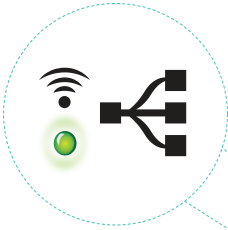
Turn Off



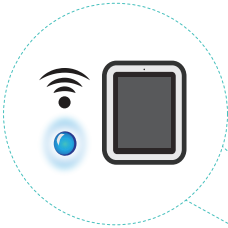
Tap to shutdown SimPad PLUS
and/or Simulator

Link Box PLUS Setup

WiFi Connection



Connected to a network -
steady green light



Connected to a SimPad PLUS
(or another instructor device) -
steady blue light



Connection between SimPad PLUS and Simulator

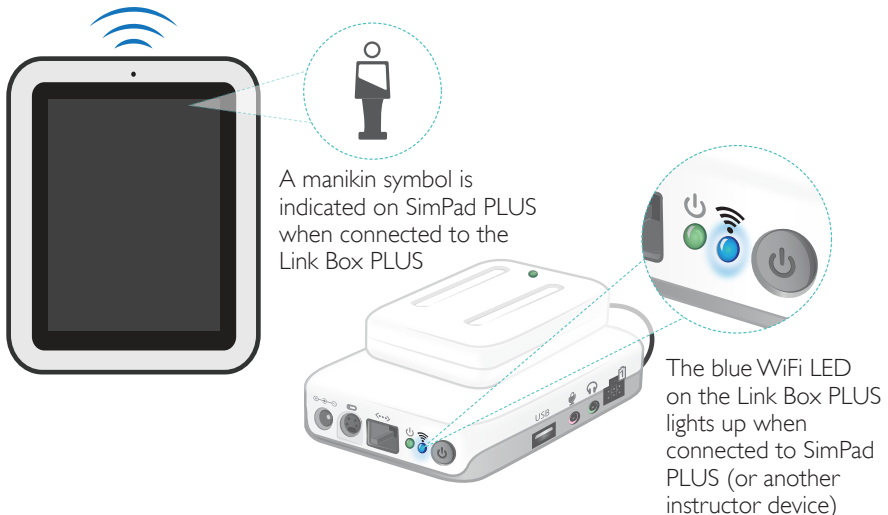
SimPad PLUS communicates with the Link Box PLUS using WiFi.



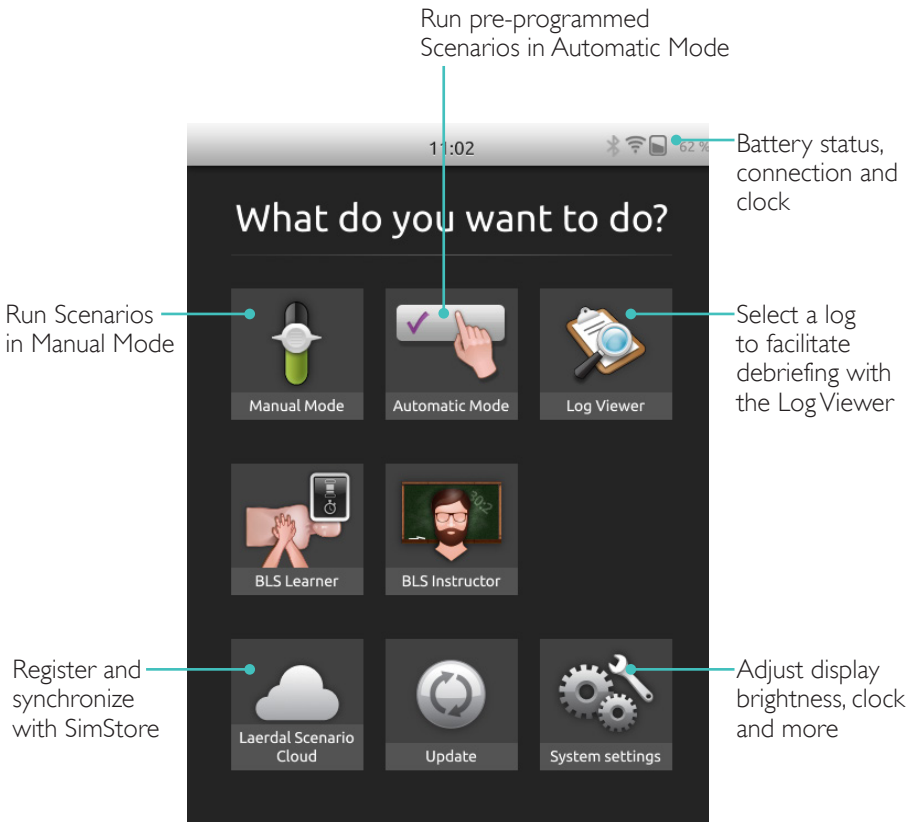
Note

When both devices are turned on for the first time, they connect to an ad hoc network. This pairing is remembered and the units will reconnect when turned on again. When multiple Link Box/Simulator are available, choose the preferred option.

This is what the system will look like when connection to simulator is established.



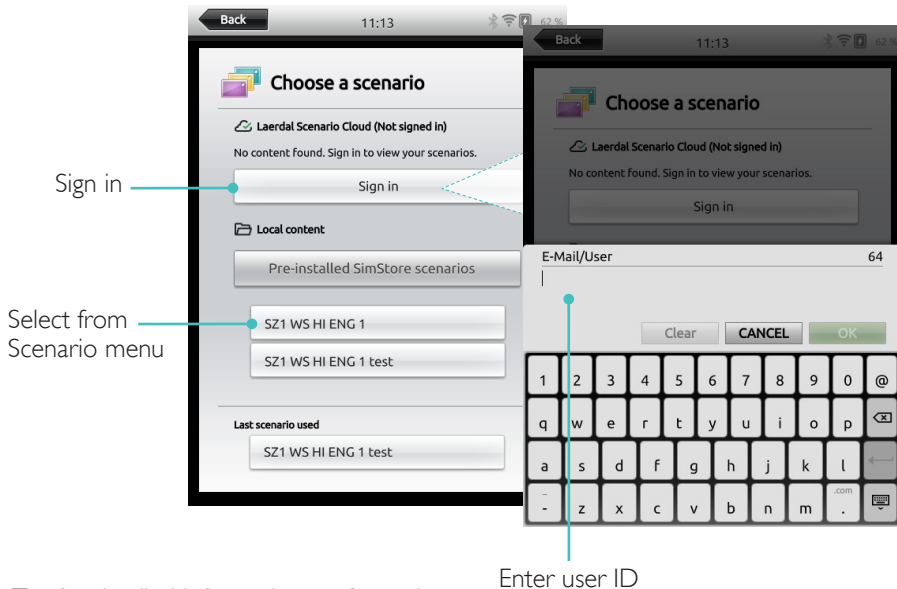
Home Screen Overview



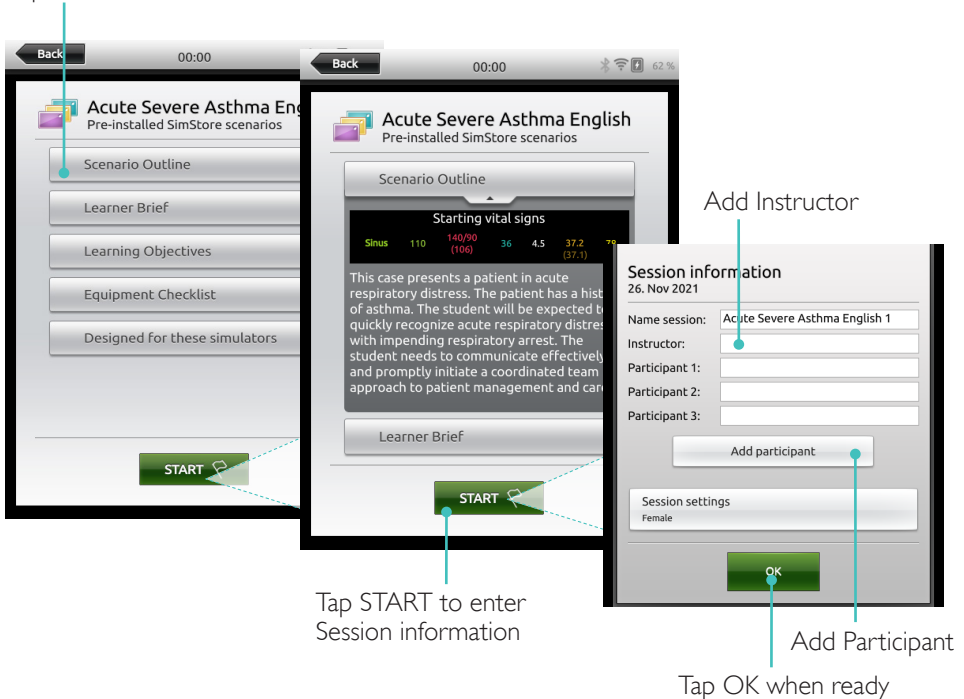
Note

Home screen may vary in appearance based on purchased licenses.

Select Scenario



Tap for detailed information on Scenario



Automatic Mode

Run Session

Time since Scenario was started

Patient status

Tap to log interventions and events

Last logged event

Categories of interventions

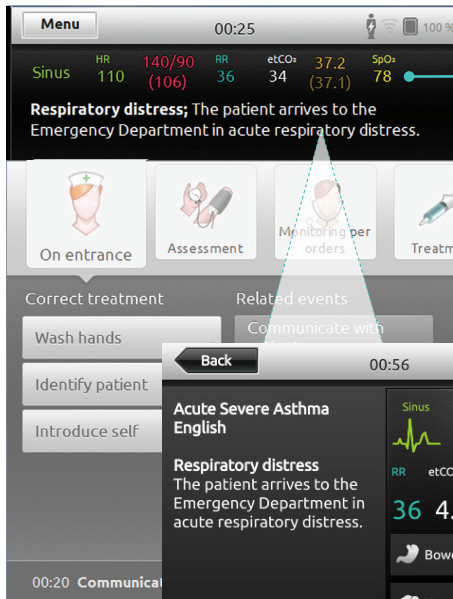
Tap to add comment

The screenshot displays a medical simulation interface. At the top, a 'Menu' button is on the left, and a timer shows '00:25'. The patient status section includes vital signs: Sinus (HR 110, BP 140/90 (106), RR 36), etCO2 (34), and SpO2 (37.2 (37.1), 78). A text box reads 'Respiratory distress; The patient arrives to the Emergency Department in acute respiratory distress.' Below this are four intervention categories: 'On entrance' (nurse icon), 'Assessment' (stethoscope icon), 'Monitoring per orders' (monitor icon), and 'Treatment' (syringe icon). The 'Correct treatment' section lists 'Wash hands' (1), 'Identify patient' (0), and 'Introduce self' (1). The 'Related events' section lists 'Communicate with patient' (1), 'Comfort patient' (1), 'Communicate clearly' (0), and 'Communicate effectively' (0). The bottom status bar shows '00:20 Communicate with patient' and a keyboard icon.

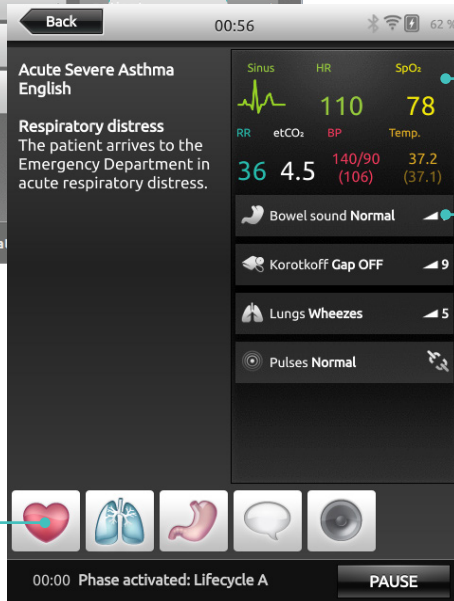
Category	Item	Count
Correct treatment	Wash hands	1
	Identify patient	0
	Introduce self	1
Related events	Communicate with patient	1
	Comfort patient	1
	Communicate clearly	0
	Communicate effectively	0

00:20 Communicate with patient

Override Pre-programmed Behaviour



Tap here to display more patient state information



Access to vital signs adjustments

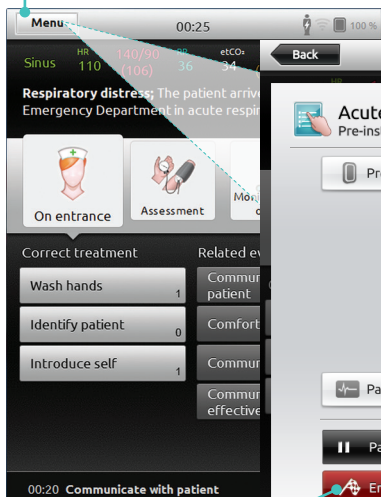
Abnormal parameter values displayed here

Select other parameters to adjust

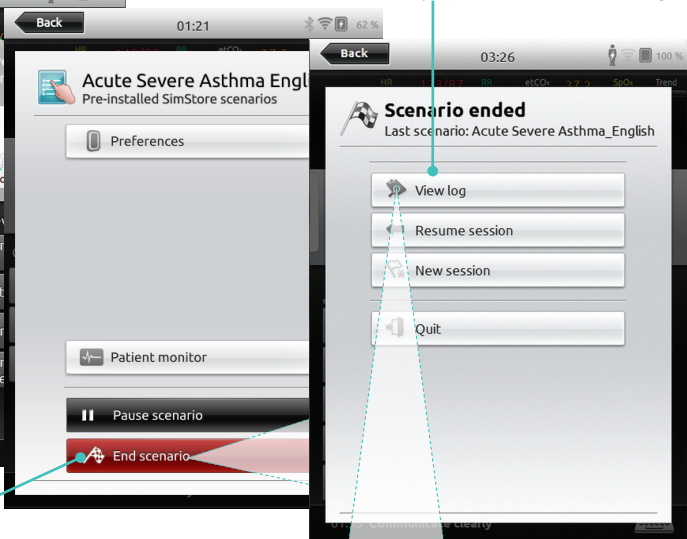
Automatic Mode

End Session

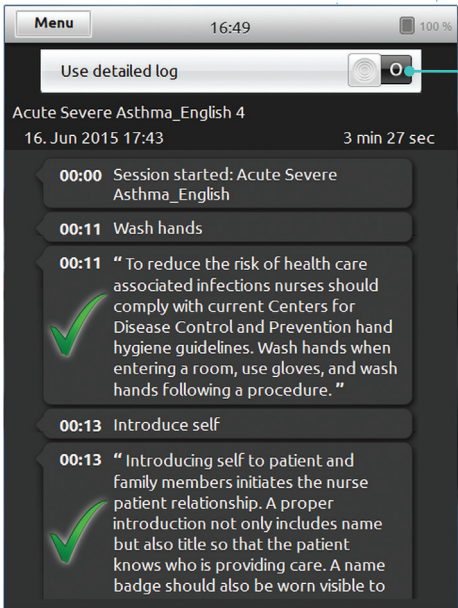
Tap menu to End Session



Open current Session log



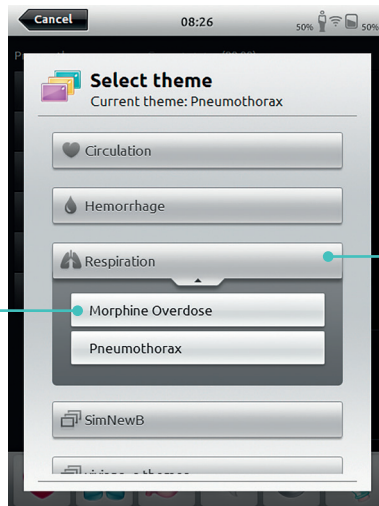
End Scenario



Display more or less information

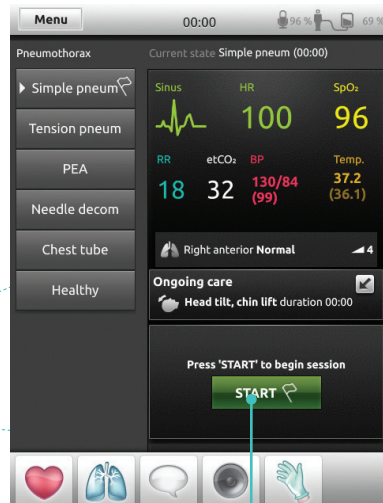
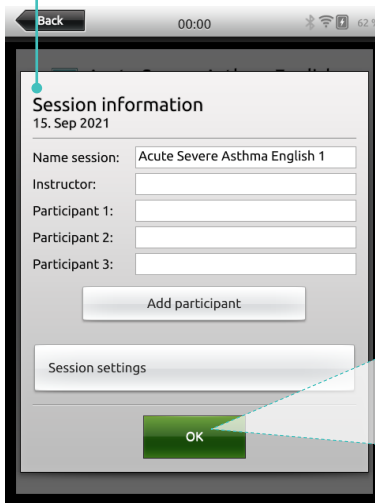
Select Theme 5.5.2.

Select theme
for simulation



Folder of themes
Tap to open

Information about Session entered
here will be added to log



Tap to start Session

Change Parameters 5.5.2.

Current state

States

Flag indicates start state

White arrow indicates last activated state

Select other parameters to adjust

Current state Simple pneum (00:37)

Time since current state was activated

Patient vital signs

Abnormal values

Collapse mini-log

End Session

Register participant's interventions

Pause Session

Toggle On/Off shock activation

Time since Session started

Tap to open State

Tap to show detailed State information, before activating

Set transition time

The expanded state shows all parameters in the queue, ready to be activated

Tap to activate State

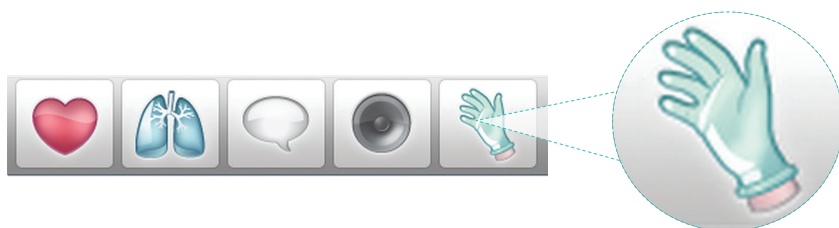
Top Screenshot Data:

- Menu
- 00:37
- Pneumothorax
- Current state Simple pneum (00:37)
- States: Simple pneum (selected), Tension pneum, PEA, Needle decom, Chest tube, Healthy
- Vital signs: Sinus HR 100, SpO2 96, RR 18, etCO2 32, BP 130/84 (99), Temp 37.2 (36.1)
- Abnormal values: Right lung Normal
- 00:00 Session started: Pneumo...
- PAUSE, END
- Icons: Heart, Lungs, Speech bubble, Camera, Glove

Bottom Screenshot Data:

- Menu
- 01:40
- Pneumothorax
- Current state Simple pneum (01:40)
- States: Simple pneum (selected), Tension pneum, PEA, Needle decom, Chest tube (expanded), Healthy
- Vital signs: Sinus HR 100, SpO2 96, RR 18, etCO2 32, BP 130/84 (99), Temp 37.2 (36.1)
- Abnormal values: Right lung Normal
- 00:00 Session started: Pneumo...
- PAUSE, END
- Icons: Heart, Lungs, Speech bubble, Camera, Glove
- Chest tube expanded state:**
 - Toggle On/Off shock activation
 - Set transition time: 5:00
 - Parameters: Sinus 100, RR 14, etCO2 30, BP 122/76 (91), Temp 37.2 (36.1), SpO2 98
 - ACTIVATE ✓

Registering Interventions



Tap to register participant's interventions

Time since Scenario was started

00:15

Back

Patient status

Sinus HR 100 130/84 (99) RR 18 etCO₂ 32 (36.1) SpO₂ 96

Tap to log interventions and events

Initial Airway Breathing Circulation

Categories of interventions

Initial

CRM Skills

Talk to patient 1

Tap and shout 0

Call for help 0

Effective communication 1

Team leadership 1

Resource utilization 0

Problem-solving 0

Closed-loop communication 0

Situational awareness 1

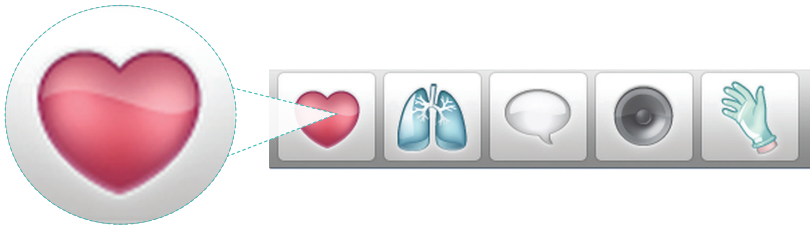
Last logged event

00:12 Situational awareness

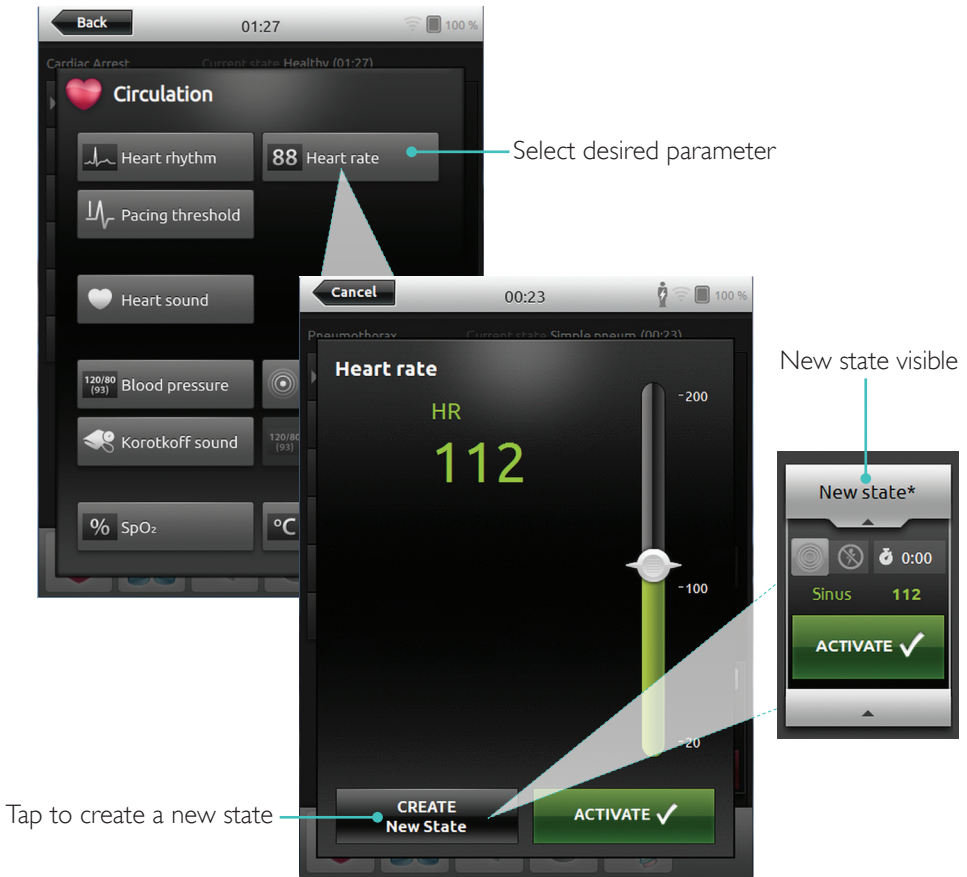
Tap to add comment

Manual Mode

Create New State for an Existing Theme

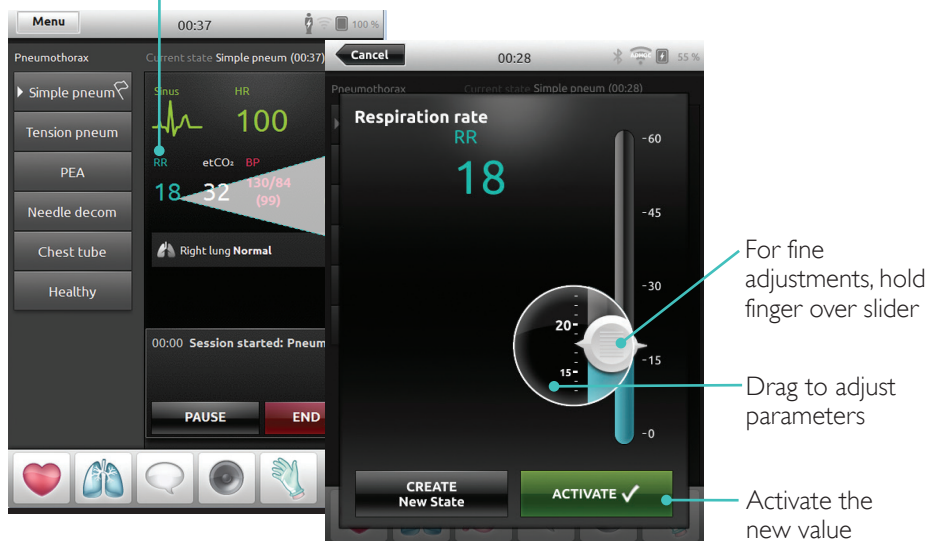


Tap to access Circulation Menu



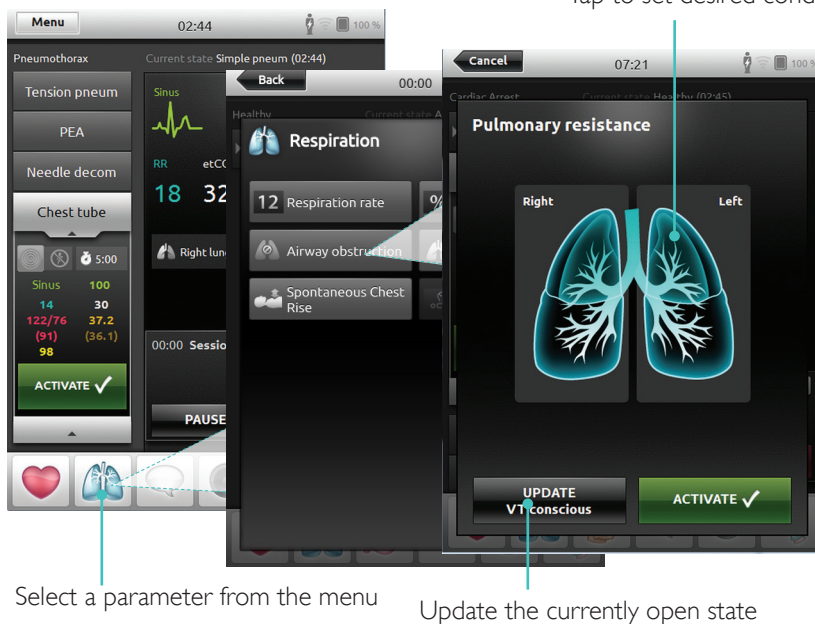
Adjust Parameters Manually

Tap to adjust values (e.g. respiration rate)



Advanced Adjustments

Tap to set desired condition



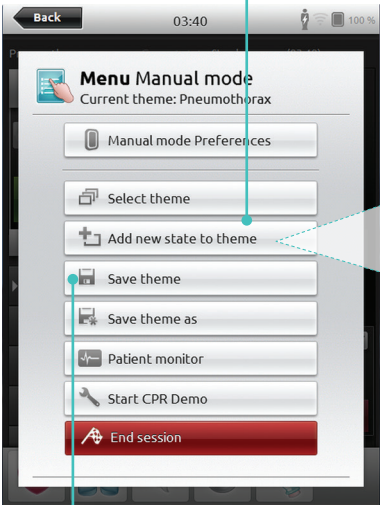
Select a parameter from the menu

Update the currently open state

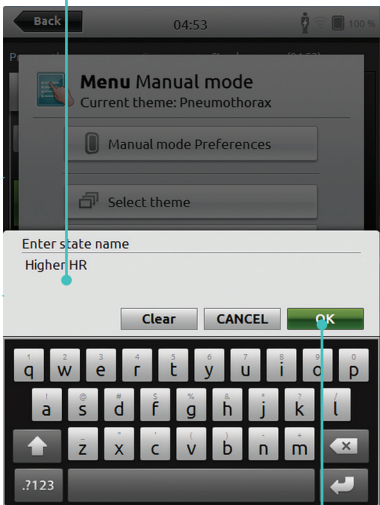
Manual Mode

Add New State to an Existing Theme

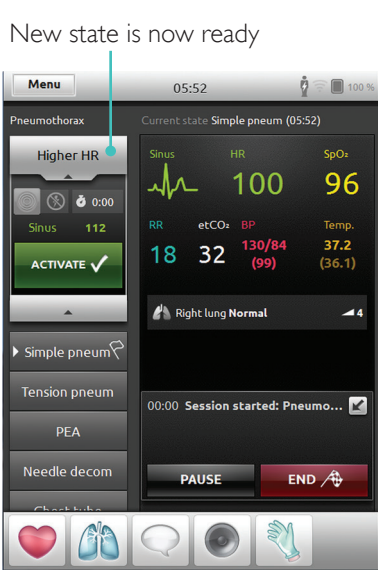
Tap to add new state to theme



Enter new state name



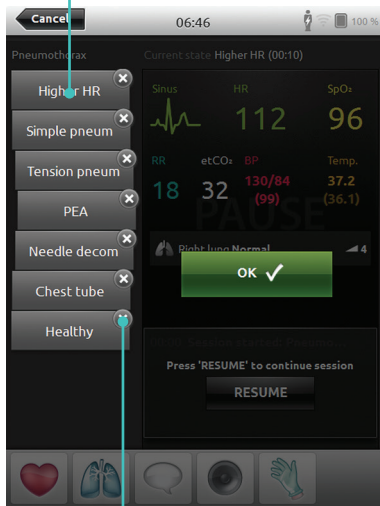
Tap to save state to theme



Confirm

New state is now ready

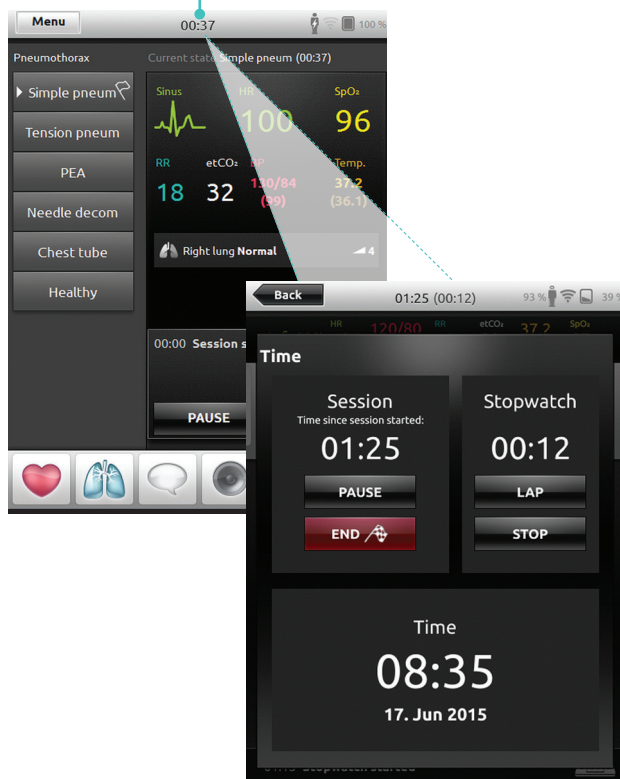
Tap and hold to arrange states



Tap x to delete

Stopwatch

Tap to display and activate the Stopwatch



View Log

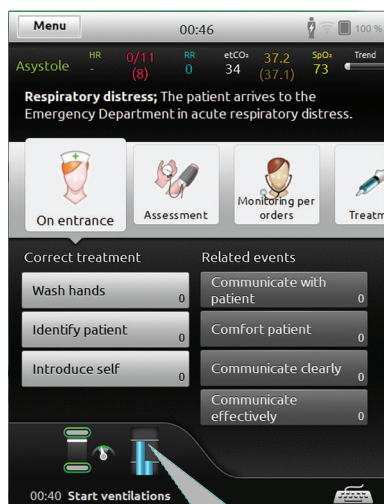


Q CPR Feedback

When CPR is performed on a CPR capable manikin, SimPad PLUS displays real time CPR feedback.

Automatic Mode -

Tap to enlarge Q CPR feedback



Manual Mode -

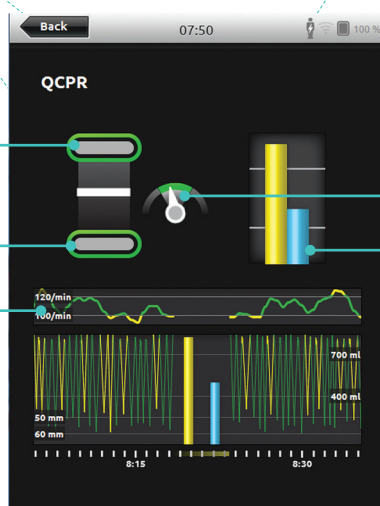
Tap to enlarge Q CPR feedback



Chest release

Compression depth

Full Session, with compressions and ventilations over time.

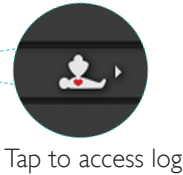


Compression rate

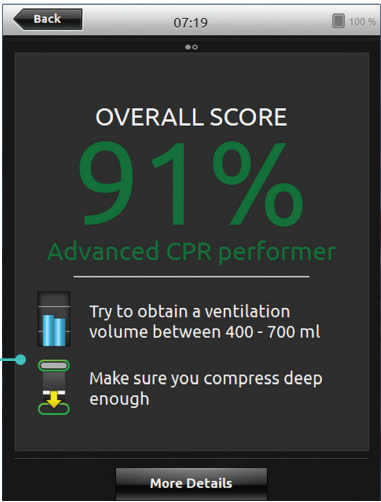
Ventilation volume

QCPR Log File

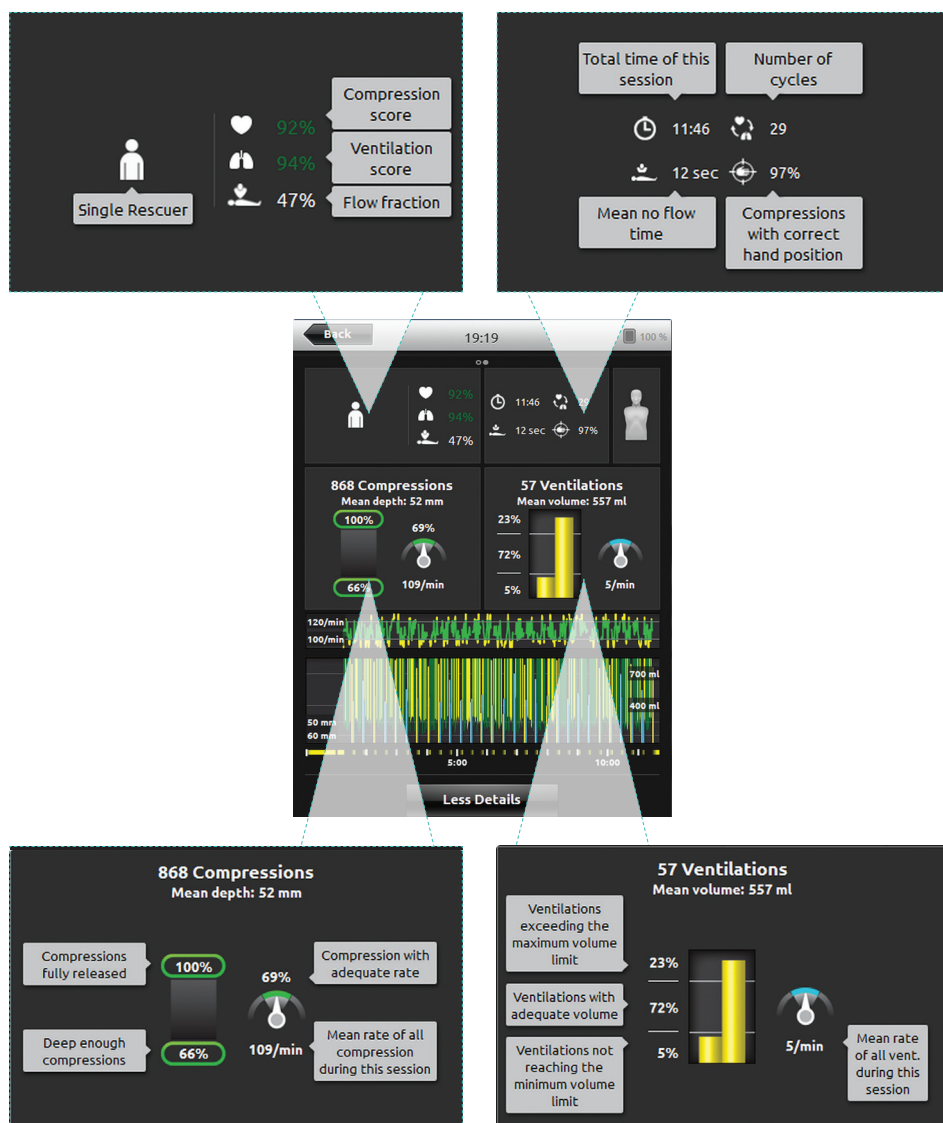
Debriefing mode provides an additional log file with data from CPR training.



Indicates two main findings from the CPR performance



QCPR Summary



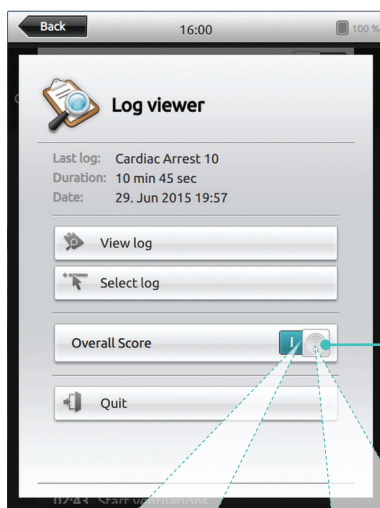
For more information about QCPR scoring, visit www.laerdal.com/no/support/cpr-scoring/

Compression Analysis Over Time

CPR settings can be adjusted to individual needs. Laerdal recommends using settings compliant with ILCOR guidelines.

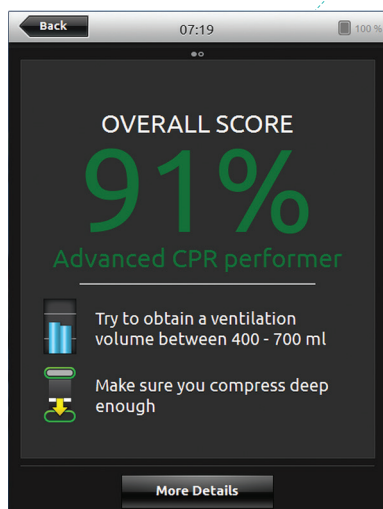


Display Choices

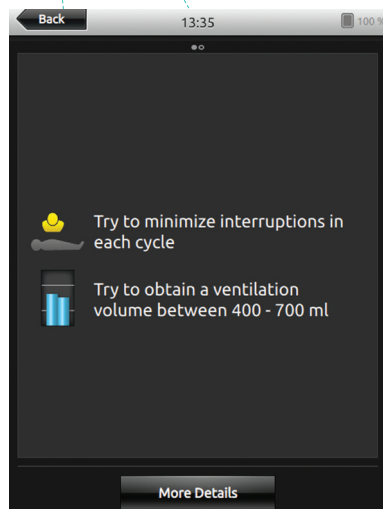


Toggle between displays
(only available on CPR
score sessions)

With overall score



Without overall score



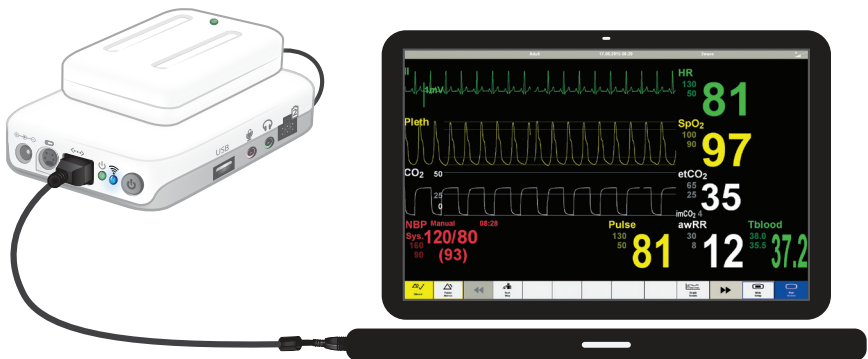
Simulated Patient Monitor

Connect a Simulated Patient Monitor 5.7.1

Ensure the Simulated Patient Monitor PC and the SimPad PLUS System are connected to the same network. Using a direct network cable to connect the Link Box PLUS to the Simulated Patient Monitor is recommended to minimize WiFi traffic.

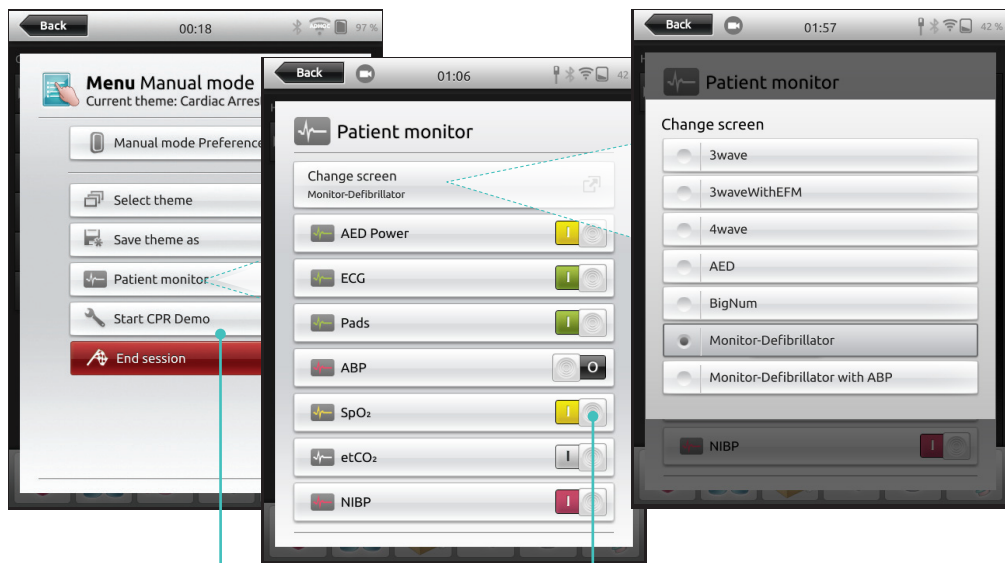
Note

Refer to Network section for more information about other network connections.



Instructor Control of Simulated Patient Monitor (optional item)

When the Simulated Patient Monitor is connected to SimPad PLUS, the instructor can toggle the display of vital signs. Navigate to Manual Mode and select Patient Monitor.



Navigate to Menu and select Patient Monitor

Toggle On/Off vital signs



Select Cut Off limits

Simulated Patient Monitor

Patient Simulator Firmware Update

When Link Box PLUS is connected to a Patient Simulator with internal firmware it will be automatically updated, if necessary.

If an automatic update is interrupted, a forced update is necessary.

From Home Screen, go to:

System Settings>About simulator>Force-update simulator firmware.



Caution

Ensure that the correct Simulator is selected. Selecting the wrong simulator may cause malfunction and require service.

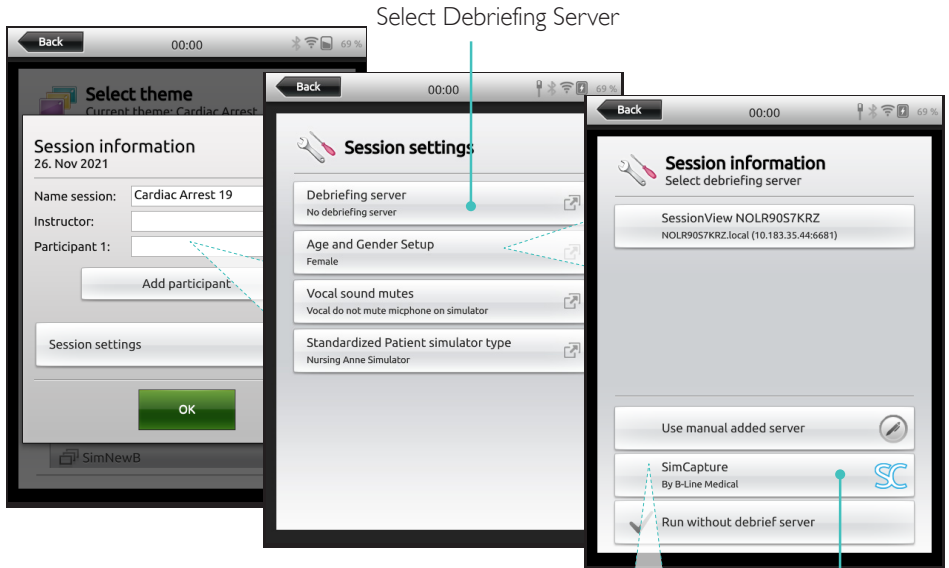
Session Viewer

Session Viewer is a free software solution that enables instructors or students to view debriefing from the SimPad PLUS System. Use Session Viewer to annotate, print and save the SimPad PLUS data log. Session Viewer also enables capture of audio and video from 1 HD USB web camera synchronized with the SimPad PLUS data log.

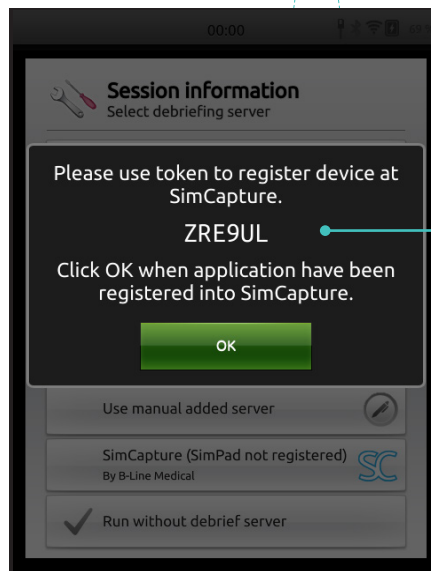
To download, visit www.laerdal.com/downloads

First Time Registration and Use

Check that both SimPad PLUS and Simulator are connected to the same steady network.



Select SimCapture



Note the code and login to Simcapture on a PC

SimCapture Setup

Before registering to SimCapture check that the SimPad PLUS is set up to the correct region.

