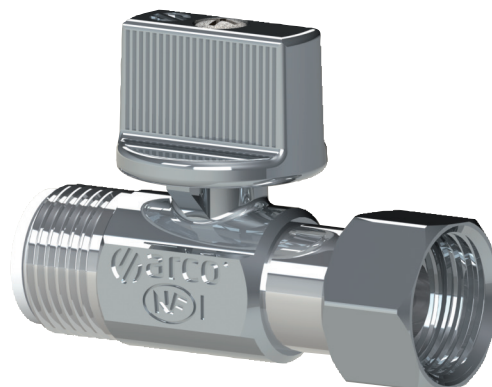




mini valve



TECHNICAL SHEET 08/2015 | IPO3010

SCOPE

MINI series are manually operated metallic ball valves that by its design and raw materials are intended to be used in plumbing networks.

These valves allow the individual shut off of sinks, basins, cisterns and other different water supply points to proceed to their repair or replacement.

MINI series are 1/4 turn valves.

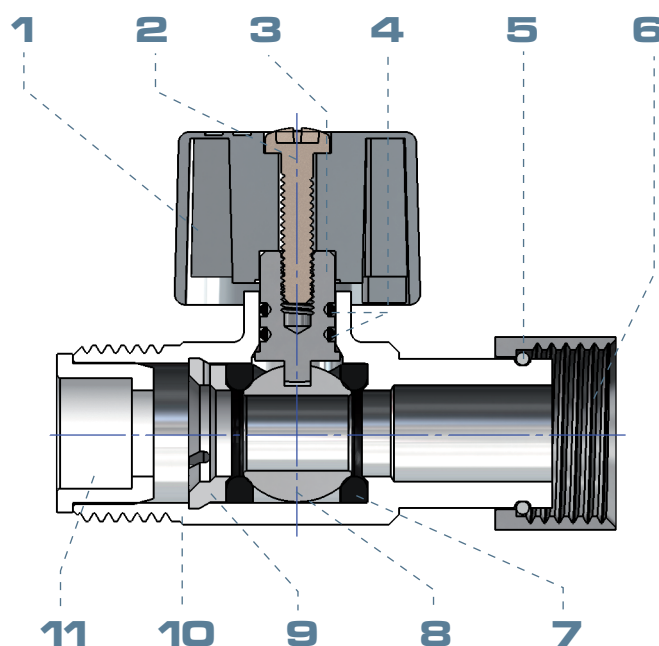
SERVICE CONDITIONS

Nominal pressure:	16 bar
Test pressure:	25 bar
Temperature range:	Cold and hot water up to 95°C
Fluid:	Drinking and domestic hot water

COMPONENTS

Item	Component	Material	Treatment
1	Handle ¹	Metal	Chrome plated
2	Screw	Stainless steel	
3	Stem	European Brass CW614N	
4	O-rings	NBR	
5	Ring	Stainless steel	
6	Swivel nut	European Brass CW614N	Chrome plated
7	Seats	NBR	
8	Ball	European Brass CW614N	Chrome plated
9	Supporting clip	POM	
10	Body	European Brass CW617N	Chrome plated
11	Adapter ²	Polyamide	

¹ Available in ABS handles for MINI HEXAGONAL.
² Depending on model.





MAIN CONSTRUCTIVE FEATURES

MONOBLOCK BODY

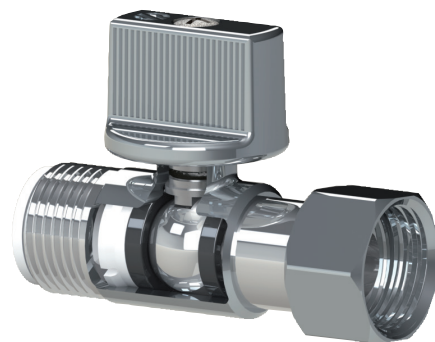
Main body manufactured in European brass alloy CW617N, by the mean of a hot stamping process.

Monoblock body without any possibility of leak, for being made in one piece, against the competitors from other models made in two pieces.

SPHERICAL CLOSURE

Spherical closure is made in European brass alloy CW614N, ensuring a higher mechanical endurance against high pressure and maneuvers.

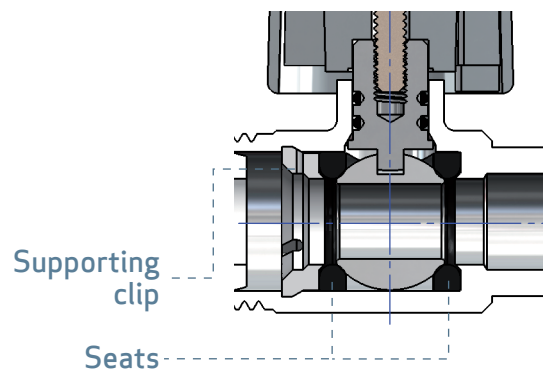
Its diamond mechanized and chrome plated applied on the ball surface assure a long lifespan and a smooth maneuver.



LEAKTIGHTNESS

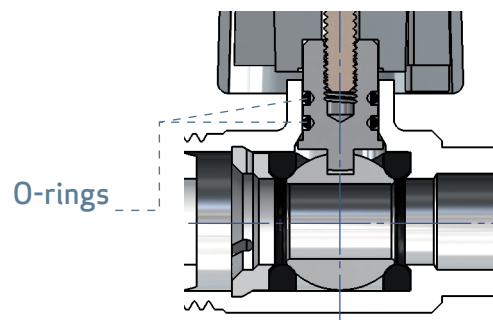
Internal

Two NBR seats pushed against the closure by the mean of a supporting clip made of POM guarantees the internal leak tightness. This system provides an extra anti-tampering feature, avoiding dismantling and improper manipulations.



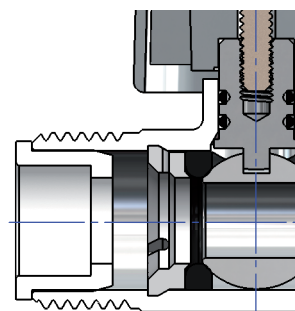
External

A double NBR seal placed on the stem assure external leak tightness. This system guarantees double safety against external leakage, use, ageing ...



ADAPTER FOR FLAT JOINT

At certain MINI models (Swivel nut – Male, Male – Male and Male – Compression), it's included an adapter at the male connection to make it easier the union by flat joint.



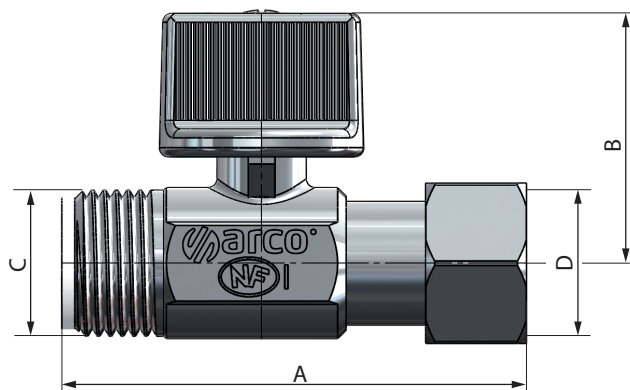


DIMENSIONS

MINI Swivel nut - male

Size	A	B	C	D
3/8SNx3/8M*	52	28	G 3/8	G 3/8
1/2SNx1/2M	61	29	G 1/2	G 1/2
1/2SNx1/2M*	63	29	G 1/2	G 1/2

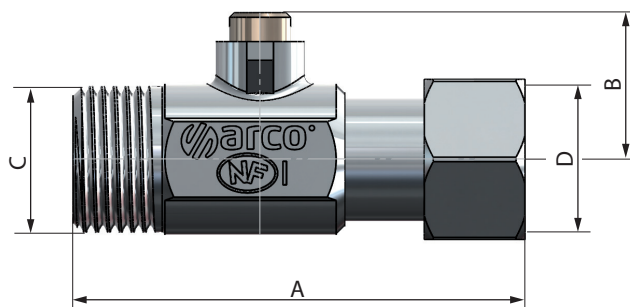
* With adapter
Threads G ISO 228



MINI Swivel nut - male. Without handle

Size	A	B	C	D
3/8SNx3/8M	50	16	G 3/8	G 3/8
1/2SNx1/2M	61	18	G 1/2	G 1/2

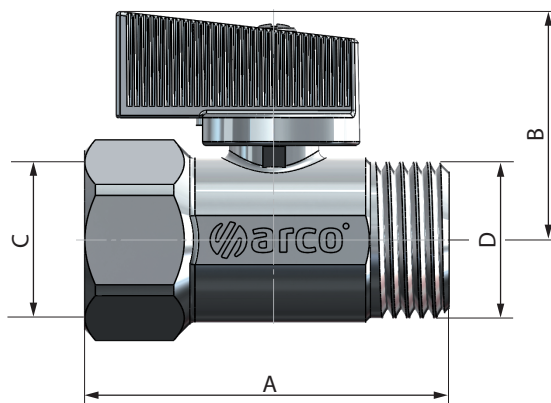
Threads G ISO 228



MINI Hexagonal Male - female

Size	A	B	C	D
1/2Mx1/2F*	49	30	G 1/2	G 1/2

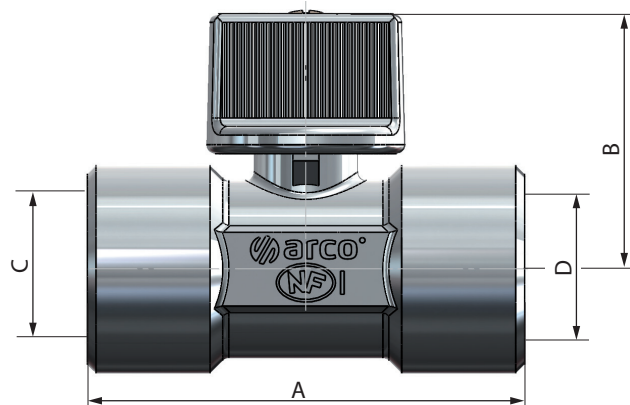
* Available in Chrome plated (Metal), Blue (ABS) or Red (ABS).
Threads G ISO 228



MINI Female - female

Size	A	B	C	D
1/2F x 1/2F	51	30	G 1/2	G 1/2

Threads G ISO 228



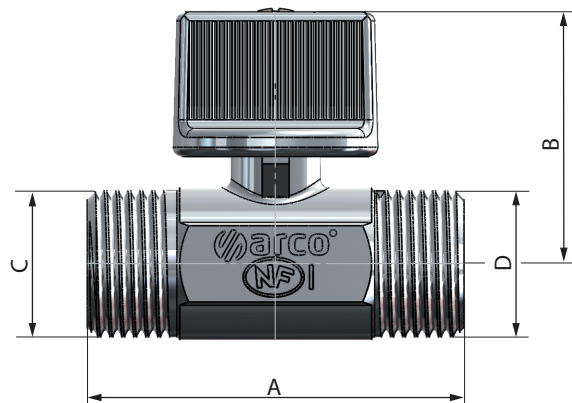


DIMENSIONS

MINI Male - male

Size	A	B	C	D
3/8Mx3/8M*	42	27	G 3/8	G 3/8
3/8Mx1/2M	45	30	G 3/8	G 1/2
1/2Mx1/2M*	45	30	G 1/2	G 1/2

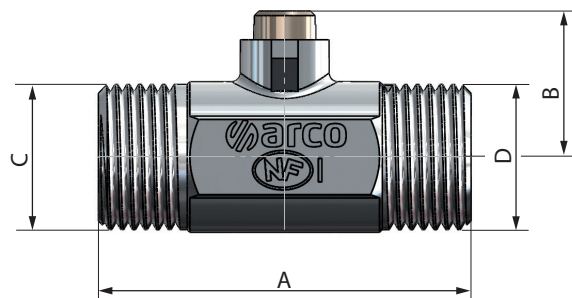
*With adapter
Threads G ISO 228



MINI Male - male. Without handle

Size	A	B	C	D
3/8Mx3/8M*	42	16	G 3/8	G 3/8

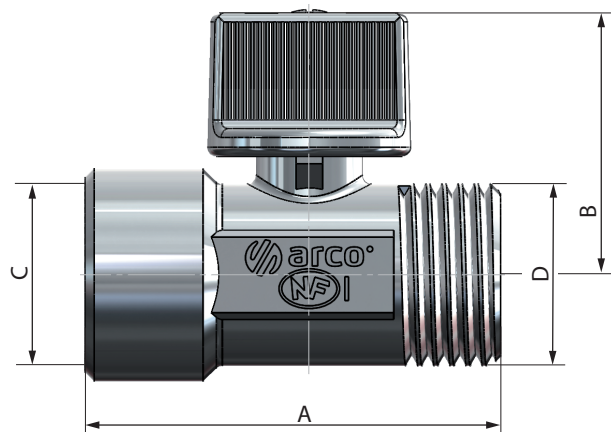
*With adapter
Threads G ISO 228



MINI Male - female

Size	A	B	C	D
1/2Mx1/2H	47	30	G 1/2	G 1/2
1/2Mx1/2H*	47	18	G 1/2	G 1/2

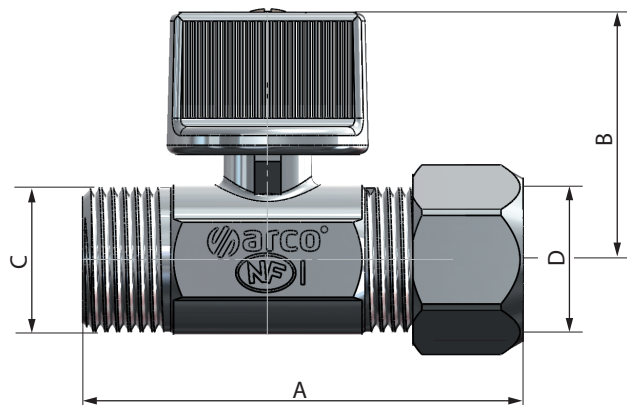
*Without handle
Threads G ISO 228



MINI Male - compression

Size	A	B	C	D
3/8Mx10*	50	28	G 3/8	10
3/8Mx12	50	28	G 3/8	12
1/2Mx10	56	29	G 1/2	10

* With adapter
Threads G ISO 228

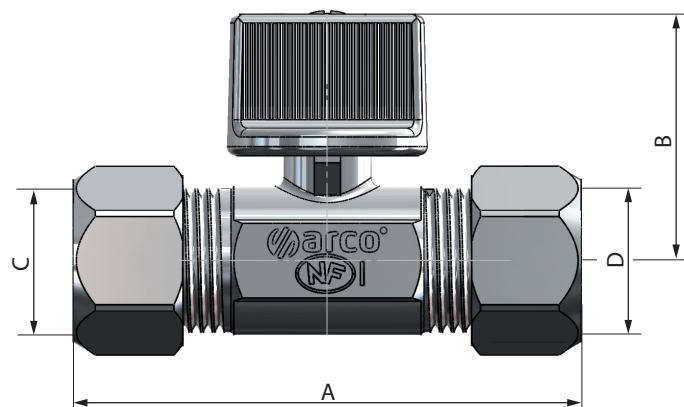




DIMENSIONS

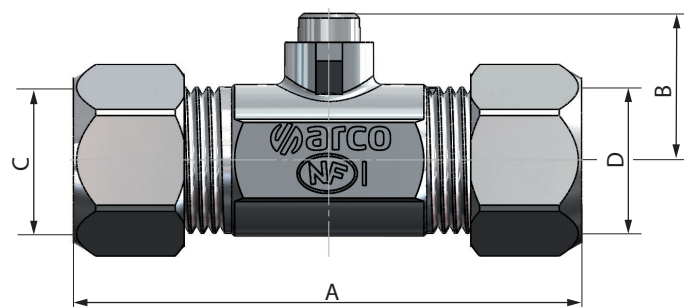
MINI Compression - compression

Size	A	B	C	D
10x12	57	28	10	12
12x12	57	28	12	12
14x10	58	29	14	10
15x10	58	29	15	10
15x15	63	29	15	15



MINI Compression - compression. Without handle

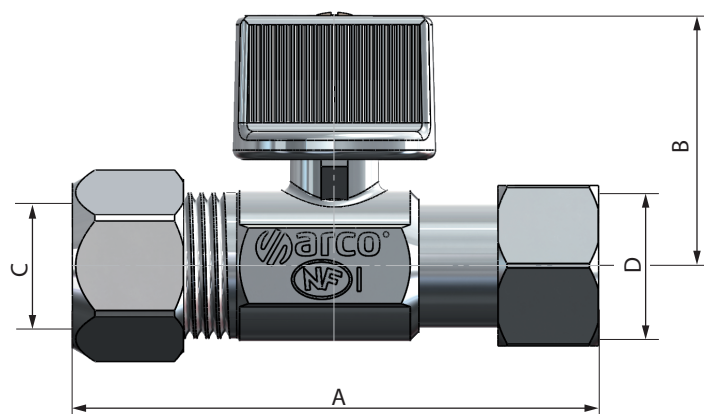
Size	A	B	C	D
10x12	57	16	10	12
14x10	58	18	14	10



MINI Swivel nut - compression

Size	A	B	C	D
3/8SNx10	60	27	10	G 3/8

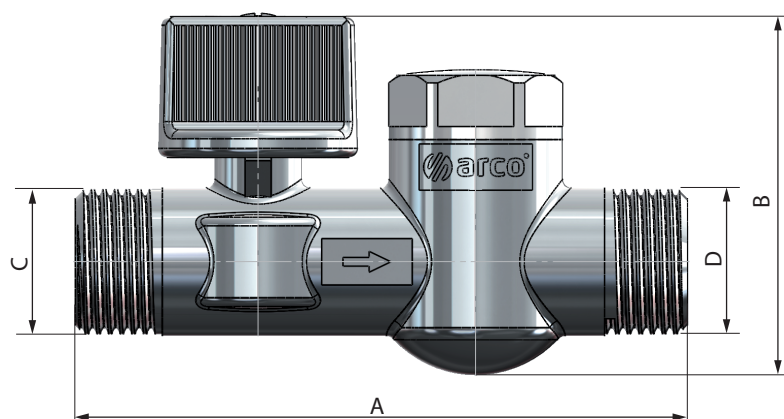
Threads G ISO 228



MINI With filter

Size	A	B	C	D
3/8Mx3/8SN	83	41	G 3/8	G 3/8

Threads G ISO 228



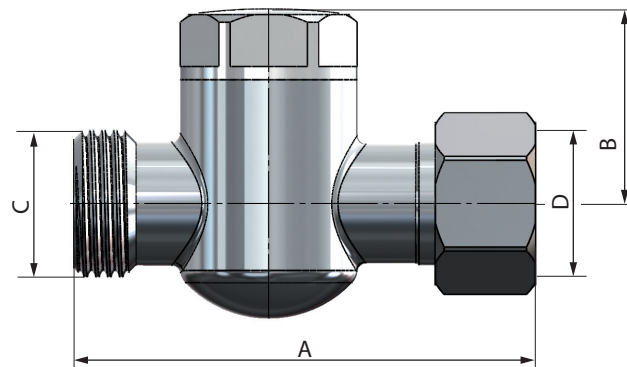


DIMENSIONS

Filter

Size	A	B	C	D
3/8SNx3/8M	52	22	G 3/8	G 3/8

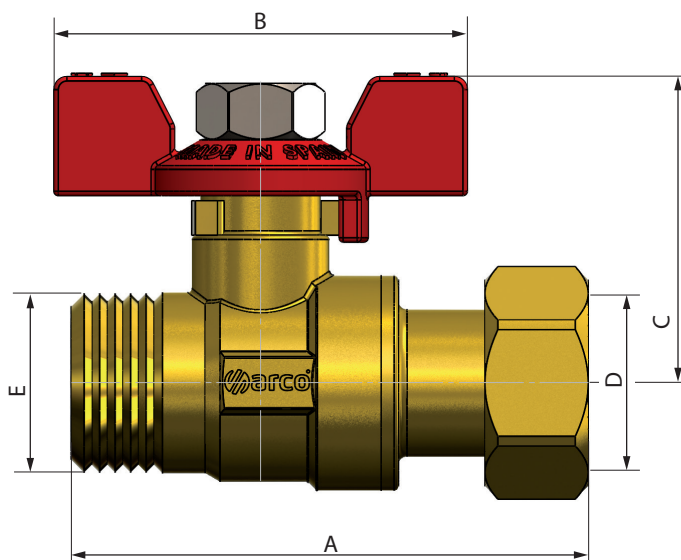
Threads G ISO 228



MINI Mainfold Ø12

Size	A	B	C	D	E
1/2SNx1/2M	61	48	36	G 1/2	G 1/2

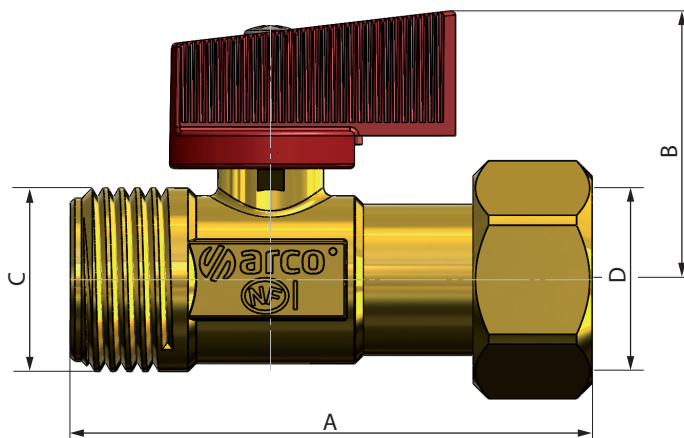
Threads G ISO 228



MINI Mainfold Ø9

Size	A	B	C	D
1/2SNx1/2M	61	30	G 1/2	G 1/2

Threads G ISO 228



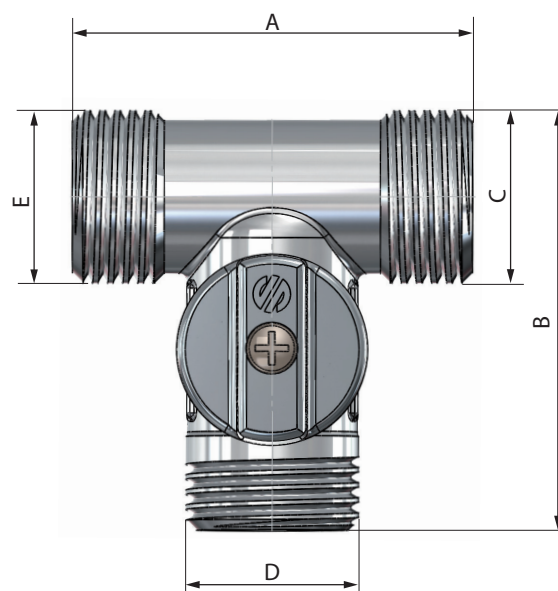


DIMENSIONS

MINI Tee Male - male

Size	A	B	C	D	E
1/2M x 1/2M x 1/2M	48	51	G 1/2	G 1/2	G 1/2
1/2M x 3/4M x 1/2M	48	51	G 1/2	G 3/4	G 1/2

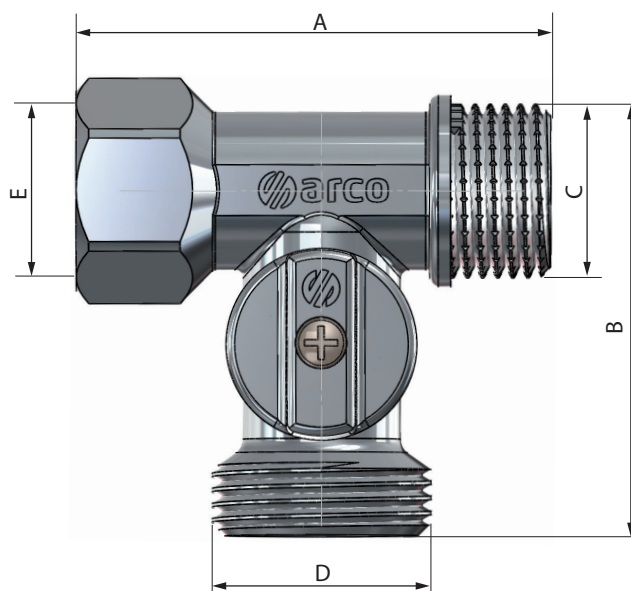
Threads G ISO 228



MINI Tee Male - female

Size	A	B	C	D	E
1/2M x 3/4M x 1/2F	48	51	G 1/2	G 3/4	G 1/2

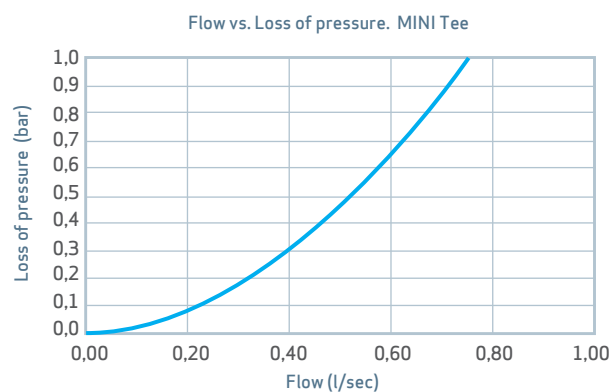
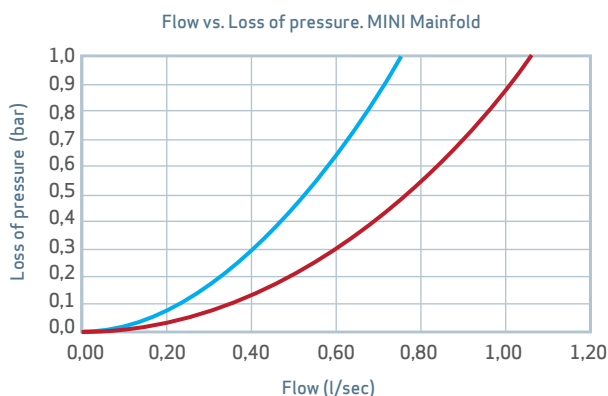
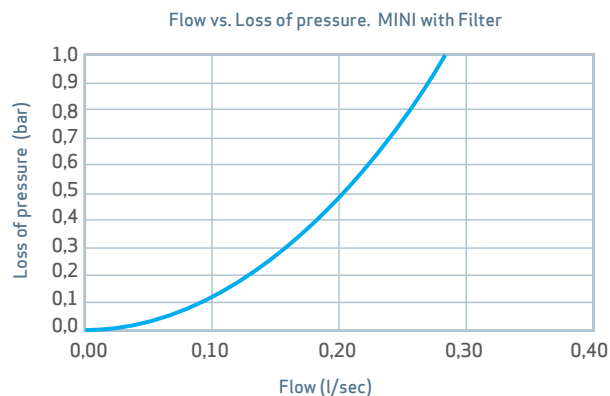
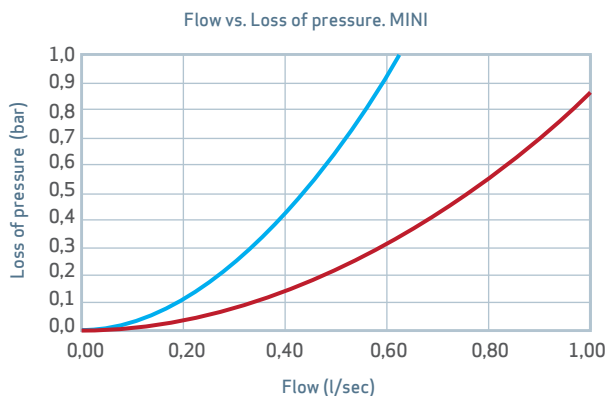
Threads G ISO 228





HYDRAULIC FEATURES

Hydraulic characteristics obtained according to EN 1267.



INSTALATION AND ASSEMBLY

Hold the valve from faces of the hexagons, never from the central part or its neck that will avoid internal components deformations (in other case valve could be damaged inevitably).

The maximum valve life is obtained with the closure sphere in the full open or close position, it is recommended do not work in intermediate positions for long time periods.

Valve must be maneuver every 3 month; this frequency must be increased for waters with a French hardness over 50°.

