



PRESS FITTING

Metal fittings for press installation system with multilayer pipe in accordance with UNE-EN ISO 21003.

- AENOR certified system.
- European Brass, DW (4MS) quality for use in drinking water installations.
- High resistance AISI 304 stainless steel press sleeves.
- 3 indicators to verify the pipe position before pressing.
- Sealing gaskets made of EPDM certified for use in drinking water
- Rings made of PA secure the steel press sleeve and prevent direct contact between the pipe and the fitting, thus minimizing potential oxidation.



TECHNICAL SHEET PRESS FITTING

PRODUCT DESCRIPTION

Press fittings, manufactured with high-quality materials; together with the multilayer pipe, they form a system certified by AENOR.

PRODUCT SCOPE

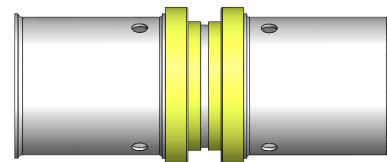
ARCO's U-shaped PEXb/AL/PEXb multilayer pipe fittings are suitable for both surface-mounted and concealed plumbing and heating installations. They're perfect for use in underfloor heating systems.

In accordance with the application classes and design pressures indicated in this document.

GENERAL DIMENSIONS, PRESSURE AND TEMPERATURE

DOUBLE COUPLING - MULTILAYER PRESS FITTING

Code	Size	PN (BAR)	Temp. (°C)*
872610A	16 X 2,0	6	Classes 1, 2, 4 and 5
872618A	18 X 2,0	6	Classes 1, 2, 4 and 5
872615A	20 X 2,0	6	Classes 1, 2, 4 and 5
872625A	25 X 2,5	6	Classes 1, 2, 4 and 5
872635A	32 X 3,0	6	Classes 1, 2, 4 and 5
872640A	40 X 4,0	6	Classes 1, 2, 4 and 5
872650A	50 X 4,5	6	Classes 1, 2, 4 and 5
872663A	63 X 6,0	6	Classes 1, 2, 4 and 5



*APPLICATION CLASSES (UNE-EN ISO 21003)

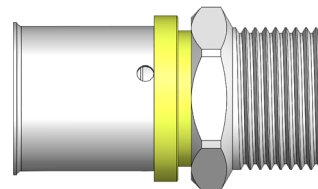
Class 1: Hot water up to 60°C.
 Class 2: Hot water up to 70°C.
 Class 4: Underfloor heating and low temperature radiators.
 Class 5: Heating by radiators at high temperature.
 In addition to these application classes, the pipes can work with cold water (20°C) up to 20 bar.

Excluding freezing.



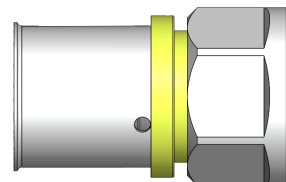
MALE COUPLING - MULTILAYER PRESS FITTING

Code	Size	PN (BAR)	Temp. (°C)*
872410A	16 X 2,0 - 1/2M	6	Classes 1, 2, 4 and 5
872418A	18 X 2,0 - 1/2M	6	Classes 1, 2, 4 and 5
872415A	20 X 2,0 - 1/2M	6	Classes 1, 2, 4 and 5
872420A	20 X 2,0 - 3/4M	6	Classes 1, 2, 4 and 5
872635A	25 X 2,5 - 3/4M	6	Classes 1, 2, 4 and 5
872640A	25 X 2,5 - 1M	6	Classes 1, 2, 4 and 5
872655A	32 X 3,0 - 1M	6	Classes 1, 2, 4 and 5
872656A	40 X 4,0 - 1 1/4M	6	Classes 1, 2, 4 and 5
872659A	50 X 4,5 - 1 1/2M	6	Classes 1, 2, 4 and 5
872462A	63 X 6,0 - 2M	6	Classes 1, 2, 4 and 5



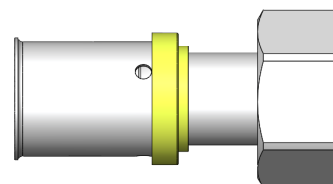
FEMALE COUPLING - MULTILAYER PRESS FITTING

Code	Size	PN (BAR)	Temp. (°C)*
872210A	16 X 2,0 - 1/2F	6	Classes 1, 2, 4 and 5
872218A	18 X 2,0 - 1/2F	6	Classes 1, 2, 4 and 5
872215A	20 X 2,0 - 1/2F	6	Classes 1, 2, 4 and 5
872220A	20 X 2,0 - 3/4F	6	Classes 1, 2, 4 and 5
872235A	25 X 2,5 - 3/4F	6	Classes 1, 2, 4 and 5
872240A	25 X 2,5 - 1F	6	Classes 1, 2, 4 and 5
872255A	32 X 3,0 - 1F	6	Classes 1, 2, 4 and 5
872657A	40 X 4,0 - 1 1/4F	6	Classes 1, 2, 4 and 5
872260A	50 X 4,5 - 1 1/2F	6	Classes 1, 2, 4 and 5
872265A	63 X 6,0 - 2F	6	Classes 1, 2, 4 and 5



LOOSE NUT COUPLING - MULTILAYER PRESS FITTING

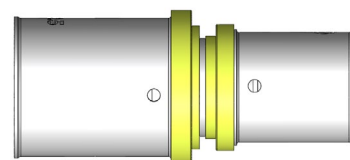
Code	Size	PN (BAR)	Temp. (°C)*
872010A	16 X 2,0 - 1/2LN	6	Classes 1, 2, 4 and 5
872020A	20 X 2,0 - 1/2LN	6	Classes 1, 2, 4 and 5
872025A	20 X 2,0 - 3/4LN	6	Classes 1, 2, 4 and 5
872040A	25 X 2,5 - 3/4LN	6	Classes 1, 2, 4 and 5
872045A	25 X 2,5 - 1LN	6	Classes 1, 2, 4 and 5
872060A	32 X 3,0 - 1 1/4LN	6	Classes 1, 2, 4 and 5





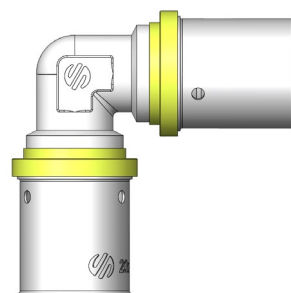
REDUCING COUPLING - MULTILAYER PRESS FITTING

Code	Size	PN (BAR)	Temp. (°C)*
872818A	18 X 2,0 – 16 X 2,0	6	Classes 1, 2, 4 and 5
872810A	20 X 2,0 – 16 X 2,0	6	Classes 1, 2, 4 and 5
872820A	25 X 2,5 – 16 X 2,0	6	Classes 1, 2, 4 and 5
872825A	25 X 2,5 – 20 X 2,5	6	Classes 1, 2, 4 and 5
872845A	32 X 3,0 – 25 X 2,5	6	Classes 1, 2, 4 and 5
872846A	40 X 4,0 – 25 X 2,5	6	Classes 1, 2, 4 and 5
872847A	40 X 4,0 - 32 X 3,0	6	Classes 1, 2, 4 and 5
872850A	50 X 4,5 – 32 X 3,0	6	Classes 1, 2, 4 and 5
872855A	50 X 4,5 – 40 X 4,0	6	Classes 1, 2, 4 and 5
872860A	63 X 6,0 – 40 X 4,0	6	Classes 1, 2, 4 and 5
872865A	63 X 6,0 – 50 X 4,5	6	Classes 1, 2, 4 and 5



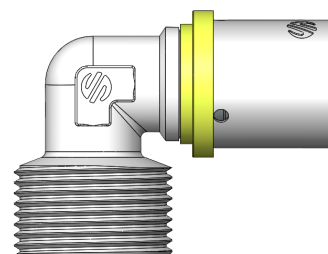
EQUAL ELBOW - MULTILAYER PRESS FITTING

Code	Size	PN (BAR)	Temp. (°C)*
873010A	16 X 2,0	6	Classes 1, 2, 4 and 5
873018A	18 X 2,0	6	Classes 1, 2, 4 and 5
873015A	20 X 2,0	6	Classes 1, 2, 4 and 5
873025A	25 X 2,5	6	Classes 1, 2, 4 and 5
873035A	32 X 3,0	6	Classes 1, 2, 4 and 5
873040A	40 X 4,0	6	Classes 1, 2, 4 and 5
873050A	50 X 4,5	6	Classes 1, 2, 4 and 5
873060A	63 X 6,0	6	Classes 1, 2, 4 and 5



MALE ELBOW - MULTILAYER PRESS FITTING

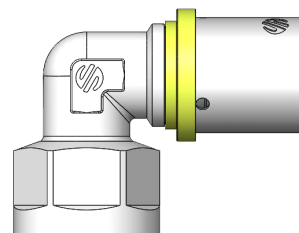
Code	Size	PN (BAR)	Temp. (°C)*
873410A	16 X 2,0 – 1/2M	6	Classes 1, 2, 4 and 5
873420A	20 X 2,0 – 3/4M	6	Classes 1, 2, 4 and 5





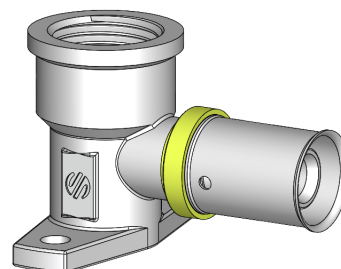
FEMALE ELBOW - MULTILAYER PRESS FITTING

Code	Size	PN (BAR)	Temp. (°C)*
873210A	16 X 2,0 – 1/2F	6	Classes 1, 2, 4 and 5
873215A	20 X 2,0 – 1/2F	6	Classes 1, 2, 4 and 5
873220A	20 X 2,0 – 3/4F	6	Classes 1, 2, 4 and 5
873235A	25 X 2,5 – 3/4F	6	Classes 1, 2, 4 and 5
873245A	32 X 3,0 -1F	6	Classes 1, 2, 4 and 5
873246A	40 X 4,0 – 1 1/4F	6	Classes 1, 2, 4 and 5
873250A	50 X 4,5 -1 1/2F	6	Classes 1, 2, 4 and 5
873260A	63 X 6,0 – 2F	6	Classes 1, 2, 4 and 5



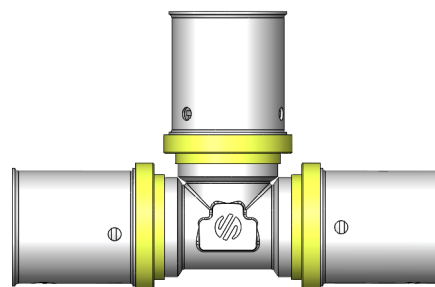
WALLPLATE FEMALE ELBOW - MULTILAYER PRESS FITTING

Code	Size	PN (BAR)	Temp. (°C)*
873610A	16 X 2,0 – 1/2F	6	Classes 1, 2, 4 and 5
873618A	18 X 2,0 – 1/2F	6	Classes 1, 2, 4 and 5
873615A	20 X 2,0 – 1/2F	6	Classes 1, 2, 4 and 5



EQUAL TEE - MULTILAYER PRESS FITTING

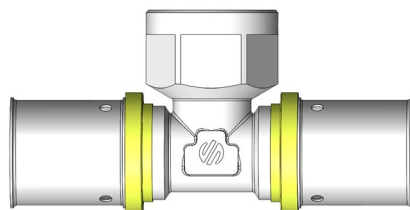
Code	Size	PN (BAR)	Temp. (°C)*
874010A	16 X 2,0	6	Classes 1, 2, 4 and 5
874018A	18 X 2,0	6	Classes 1, 2, 4 and 5
874015A	20 X 2,0	6	Classes 1, 2, 4 and 5
874025A	25 X 2,5	6	Classes 1, 2, 4 and 5
874035A	32 X 3,0	6	Classes 1, 2, 4 and 5
874040A	40 X 4,0	6	Classes 1, 2, 4 and 5
874050A	50 X 4,5	6	Classes 1, 2, 4 and 5
874060A	63 X 6,0	6	Classes 1, 2, 4 and 5





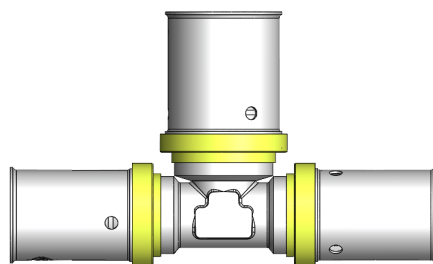
FEMALE TEE - MULTILAYER PRESS FITTING

Code	Size	PN (BAR)	Temp. (°C)*
874410A	16 X 2,0 – 1/2H -16 X 2,0	6	Classes 1, 2, 4 and 5
874418A	18 X 2,0 - 1/2H -18 X 2,0	6	Classes 1, 2, 4 and 5
874420A	20 X 2,0 - 1/2H - 20 X 2,0	6	Classes 1, 2, 4 and 5
874450A	25 X 2,5 - 3/4H- 25 X 2,5	6	Classes 1, 2, 4 and 5
874480A	32 X 3,0 - 3/4H - 32 X 3,0	6	Classes 1, 2, 4 and 5
874440A	40 X 4,0 - 1 1/4H - 40 X 4,0	6	Classes 1, 2, 4 and 5
874455A	50 X 4,5 - 1 1/2H - 50 X 4,5	6	Classes 1, 2, 4 and 5
874460A	63 X 6,0 - 2H - 63 X 6,0	6	Classes 1, 2, 4 and 5



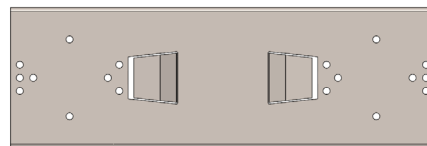
REDUCING TEE - MULTILAYER PRESS FITTING

Code	Size	PN (BAR)	Temp. (°C)*
874210A	16 X 2,0 - 20 X 2,0 - 16 X 2,0	6	Classes 1, 2, 4 and 5
874238A	18 X 2,0 - 16 X 2,0 -18 X 2,0	6	Classes 1, 2, 4 and 5
874230A	20 X 2,0 - 16 X 2,0 - 16 X 2,0	6	Classes 1, 2, 4 and 5
874240A	20 X 2,0 - 16 X 2,0 - 20 X 2,0	6	Classes 1, 2, 4 and 5
874248A	20 X 2,0 - 18 X 2,0 - 20 X 2,0	6	Classes 1, 2, 4 and 5
874250A	20 X 2,0 - 20 X 2,0 - 16 X 2,0	6	Classes 1, 2, 4 and 5
874300A	25 X 2,5 - 16 X 2,0 - 25 X 2,5	6	Classes 1, 2, 4 and 5
874316A	25 X 2,5 - 20 X 2,0 - 20 X 2,0	6	Classes 1, 2, 4 and 5
874326A	25 X 2,5 - 20 X 2,0 - 25 X 2,5	6	Classes 1, 2, 4 and 5
874340A	32 X 3,0 - 20 X 2,0 - 32 X3,0	6	Classes 1, 2, 4 and 5
874345A	32 X 3,0 - 25 X 2,5 - 32 X 3,0	6	Classes 1, 2, 4 and 5
874342A	32 X 3,0 - 25 X 2,5 - 25 X 2,5	6	Classes 1, 2, 4 and 5
874346A	40 X 4,0 - 25 X 2,5 - 40 X 4,0	6	Classes 1, 2, 4 and 5
874347A	40 X 4,0 - 32 X 3,0 - 40 X 4,0	6	Classes 1, 2, 4 and 5
874250A	50 X 4,5 - 32 X 3,0 - 50 X 4,5	6	Classes 1, 2, 4 and 5
874255A	50 X 4,5 - 40 X 4,0 - 50 X 4,5	6	Classes 1, 2, 4 and 5
874256A	63 X 6,0 - 50 X 4,5 - 63 X 6,0	6	Classes 1, 2, 4 and 5



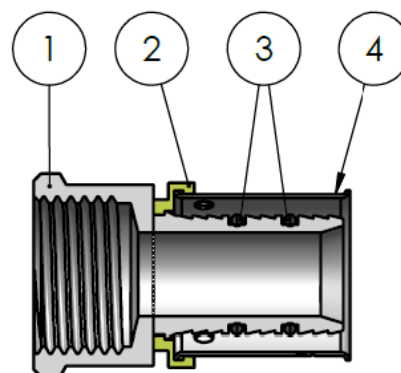
WALL PLATE - MULTILAYER PRESS FITTING

Code	Size
855010	205 X 67



MATERIALS

Item	Component	Material	Finishing
1	Body	Brass CW617N	Nickel plated
2	Rings	PA	Green
3	Gaskets	EPDM	-
4	Press sleeves	Stainless steel	Stainless steel



Compatibility with fluids

Fluid	Compatibility
Drinking water and domestic hot water	Excellent

INSTALLATION AND OPERATION INSTRUCTIONS

These instructions and recommendations apply to the ARCO multilayer system, certified by AENOR, applying to both pipes and fittings.

The pipes and fittings are delivered in factory packaging to protect them during storage and transport, keep this original packaging until use on site.

Avoid crushing, breakage of packaging, direct and continuous exposure to the sun, as well as contact with aggressive chemical products.

Avoid dragging the pipes on the floor or vertical enclosures, they could be damaged or even become unusable, we recommend the use of uncoilers that facilitate their handling and avoid damage.

Avoid dirt or foreign objects entering inside of the pipes, valves or fittings, they could cause operational problems once installed, making the installation unusable.

The elements of this system up to 32 mm diameter: pipe and fittings, must be pressed with a U-type jaw, as specified in the AENOR certificate. This system is also compatible with RFz jaws, although no certificate issued by AENOR is available.

The elements of the system equal to or greater than 40 mm: pipe and fitting, must be pressed only with a U-type jaw.



INSTALLATION AND OPERATION INSTRUCTIONS

The pipe and fittings supplied by ARCO constitute a system certified by AENOR, and are not interchangeable with other products or trademarks, losing the validity of the certificate.

Before performing any action, the water supply to the installation must be shut off. Make sure there is no dirt or foreign objects in the connection to the network.

To perform a correct installation, the following instructions must be followed:

- Cut the pipe at right angles, cleanly, with scissors or plastic pipe cutters, never with a saw or similar.
- Calibrate and chamfer the inside of the pipe with a calliper corresponding to the size of the pipe, checking that the inside chamfer is uniform and free of burrs or impurities. A bad calibration or chamfering makes the placement of the pipe difficult and can be a cause of leakage in the installation.
- For diameters equal to or greater than 40 mm, it is recommended to use a calibrating tool, independent of the chamfering tool, that at least calibrates the first 25 mm of the pipe.
- Insert the pipe up to the end of the fitting connection. The correct positioning of the pipe is verified visually, checking that the pipe is visible through the 3 holes in the base of the press sleeve.
- Do not use any type of lubricant, except clean water to facilitate the entry of the pipe into the fitting.
- Press the connection with the radial pressing tool, manually opening the jaws, positioning the press sleeve until the plastic ring stops the jaw. The connection must be perpendicular to the jaw.
- The pressing operation ends when the tool audibly or visually signals the end of the pressing cycle. Do not interrupt the pressing cycle, as this would cause leakage in the installation.
- Open the jaw manually and remove the already pressed assembly.
- Both the jaws and the tools used in the pressing process must be in proper working condition according to the specifications and revisions indicated by their manufacturer.

Restore the water supply and check the tightness of all connections before fixing the valve to service.



All products have an environmental impact during its life cycle, even once retired. All the components of this product can be recycled. Once the use is over, leave the valve in any recycling green point. Válvulas Arco reserves the right to change the product or any of its technical specifications without prior notice.