

cardiology

PRIMUM

Guiding catheter

HYDROPHILIC COATED GUIDING CATHETER

12 poz.

22 poz.



PendraCare®

Let us guide you...

As of today hydrophilic coating will change
the guiding catheter landscape...

12 poz.

22 poz.

Wear resistant
hydrophilic
coating approx.
7cm proximal from
the tip until 25 cm
distal from
the hub

Uncoated
segment for
optimal alignment
and back up
support

Largest
inner lumen
over the whole
range

Small a-traumatic
softtip



shape selector

		FEMORAL			RADIAL			BYPASS		
		small	normal	dilated	small	normal	dilated	small	normal	dilated
LCA	Left shapes									
		JL3 JL3,5 FL3 FL3,5	JL4 JL4,5 FL4 FL4,5	JL5 JL6 FL5 FL6	JL3 FL3 RBL3,5 TIG 3,5	JL3,5 JL4 FL3,5 FL4 RBL4 RAD RBM TIG 4,0 RBK	JL4,5 FL4,5 RBL4,5 RAD RBM TIG 4,5	LCB HS JR4	RCB HS JR4	IM JR4
	Extra back up shapes									
RCA	Right shapes									
		XB3 XB3,25 EBU3 EBU3,25 XBLAD3 XBLAD3,5	XB3,5 XB3,75 EBU3,5 EBU3,75 EBU4 XBLAD4 XBLAD4,5	XB4 XB3,25 XB4,5 FRU4,25 EBU4,5 EBU5 XBLAD5 XBLAD6	XB3 XB3,25 EBU3 EBU3,25	XB3,5 XB3,75 EBU3,5 EBU3,75 EBU4	XB4 XB3,25 XB4,5 EBU4,25 EBU4,5 EBU5			
	Amplatz shapes									
LCA	Left shapes									
		AL,75 AL1	AL1,5 AL2	AL3	AL2 AL3					
	Extra back up shapes									
RCA	Right shapes									
		JR3 JR3,5 FR3 FR3,5 SCR3,5	JR4 JR4,5 FR4 FR4,5 SCR4	JR5 JR6 FR5 FR6 SCR5	JR4 FR4 TIG 3 TIG 3,5	JR4 FR4 RAD RBM TIG 4,0 HS	JR4 FR4 RAD RBM TIG 4,5 TIG 5			
	Amplatz shapes									
		AR1	AR2							

12 poz.
22 poz.

OTHER TAKE-OFFS

UP FACING DOWNWARD FACING

LCA

Left shapes



AL1
AL2
MP

RCA

Right shapes



HS
AL2
MP
AR1

PRIMUM

non nocere

First, do no harm

Guiding catheter selection considerations

The guiding catheter is the key to a successful procedure. In combination with the unique features of the PRIMUM, the selection of a guiding catheter depends on:

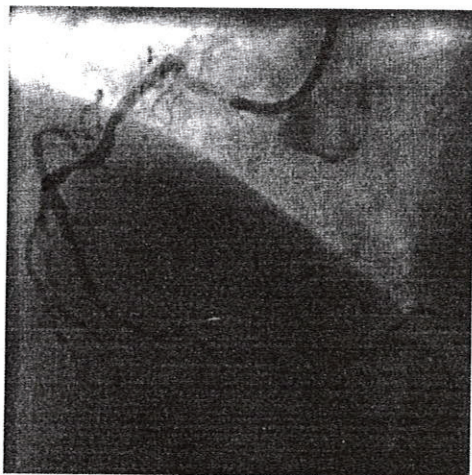
The shape selection

- Femoral or Radial approach
- French size 5F, 6F, 7F or 8F
- Target vessel: RCA, LAD, LCX or bypass
- Narrow, normal or dilated aortic root
- Upward-, normal or downward facing coronary artery take-off
- Location of the lesion
- Severity of the lesion
- Active support needed
- Amount of calcium in target vessel

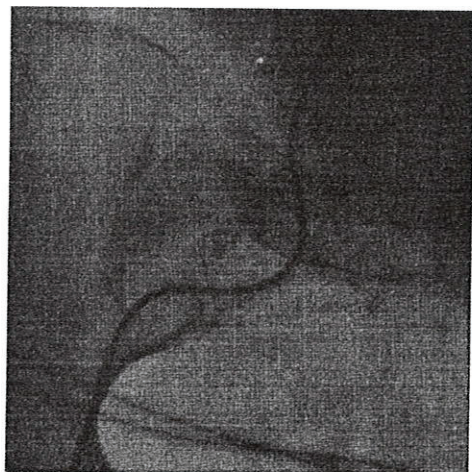
12 poz.
22 poz.

French size

- 6F is the workhorse and the majority cases can be successfully performed with a 6F.
- 5F mainly for radial approach with small vessel and single vessel disease
- 7F when the back up support of a 6F may not be sufficient or for rotablator procedures with a Burr to 1.75 mm
- 8F for rotablator procedures with a Burr bigger than 1.75mm



Superior shape retention
and back up support



Low friction in tortuous and
calcified anatomy

...even challenging cases will look easy from now on

Hydrophilic coating providing new frontiers

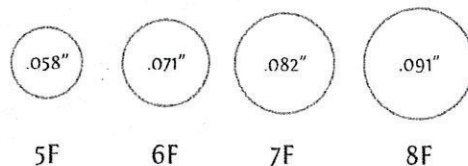
- Smooth catheter introduction
- Low friction during catheter advancement in tortuous and calcified anatomy
- Reduced vessel spasm in radial approach resulting in more patient comfort
- Less trauma to the vessel wall reducing the risk of debris flowing downstream which could lead to TIA's
- The uncoated proximal 25 cm of the catheter stays outside the body which makes manipulation easier

Very precise control

- No stick slip effect due to Hydrophilic coating provides more accurate tip positioning in ostial lesions
- The uncoated segment in the valve of the sheath prevents unintentional movement of the catheter during the procedure
- No catheter friction provides real 1:1 torque control of the tip
- Encapsulated ultra thin high strength flat wire braiding provides high kink resistance against torsional and radial compression and excellent pushability characteristics

Largest inner lumen over the whole range

- Good contrast injection, also in combination with kissing balloon technique
- Larger lumens offer expanded device compatibility for large profile devices and enables downsizing



1 2 pos.
2 2 pos.

Superior back up support

- Excellent shape retention during prolonged procedure time
- Minimal temperature softening of the catheter providing more passive backup support
- Uncoated segment in the tip providing good grip at ostium and support of opposite aorta wall to give additional passive backup support

Ordering information

	shape	5F	6F	7F	8F
LEFT	JL3	25402004	26402004*	27402004*	28402004*
	JL3,5	25402104	26402104*	27402104*	28402104*
	JL4	25402204	26402204*	27402204*	28402204*
	JL4,5	25402304	26402304*	27402304*	28402304*
	JL5	25402404	26402404*	27402404*	28402404*
	JL6	25402504	26402504*	27402504*	28402504*
	FL3	25404404	26404404*	27404404*	28404404*
	FL3,5	25404504	26404504*	27404504*	28404504*
	FL4	25404604	26404604*	27404604*	28404604*
	FL4,5	25404704	26404704*	27404704*	28404704*
RIGHT	FL5	25404804	26404804*	27404804*	28404804*
	FL6	25404904	26404904*	27404904*	28404904*
	XBLAD3	25408104	26408104*	27408104*	28408104*
	XBLAD3,5	25407804	26407804*	27407804*	28407804*
	XBLAD4,0	25407904	26407904*	27407904*	28407904*
	XBLAD4,5	25408204	26408204*	27408204*	28408204*
	XBLAD5	25408304	26408304*	27408304*	28408304*
	JR3	25402604	26402604*	27402604*	28402604*
	JR3,5	25402704	26402704*	27402704*	28402704*
	JR4	25402804	26402804*	27402804*	28402804*
MULTI PURPOSE	JR4,5	25402904	26402904*	27402904*	28402904*
	JR5	25403004	26403004*	27403004*	28403004*
	JR6	25403104	26403104*	27403104*	28403104*
	FR3	25403804	26403804*	27403804*	28403804*
	FR3,5	25403904	26403904*	27403904*	28403904*
	FR4	25404004	26404004*	27404004*	28404004*
	FR4,5	25404104	26404104*	27404104*	28404104*
	FR5	25404204	26404204*	27404204*	28404204*
	FR6	25404304	26404304*	27404304*	28404304*
	MPA	25403604	26403604*	27403604*	28403604*
AMPLATZ	HS	25401504	26401504*	27401504*	28401504*
	AL0,75	25400104	26400104*	27400104*	28400104*
	AL1	25400204	26400204*	27400204*	28400204*
	AL1,5	25401004	26401004*	27401004*	28401004*
	AL2	25400304	26400304*	27400304*	28400304*
	AL3	25400404	26400404*	27400404*	28400404*
	AR1	25400504	26400504*	27400504*	28400504*
	AR2	25400704	26400704*	27400704*	28400704*
	XB3	25407304	26407304*	27407304*	28407304*
	XB3,25	25408404	26408404*	27408404*	28408404*
EXTRA BACK UP	XB3,5	25407504	26407504*	27407504*	28407504*
	XB3,75	25407404	26407404*	27407404*	28407404*
	XB4	25407604	26407604*	27407604*	28407604*
	XB4,25	25408504	26408504*	27408504*	28408504*
	XB4,5	25407704	26407704*	27407704*	28407704*
	EBU3	25408604	26408604*	27408604*	28408604*
	EBU3,25	25408704	26408704*	27408704*	28408704*
	EBU3,5	25408804	26408804*	27408804*	28408804*
	EBU3,75	25408904	26408904*	27408904*	28408904*
	EBU4	25409004	26409004*	27409004*	28409004*
TRANSRADIAL	EBU4,25	25409104	26409104*	27409104*	28409104*
	EBU4,5	25409204	26409204*	27409204*	28409204*
	EBU4,75	25409304	26409304*	27409304*	28409304*
	EBU5	25409404	26409404*	27409404*	28409404*
	XBRC3	25409504	26409504*	27409504*	28409504*
	XBRC3,5	25409604	26409604*	27409604*	28409604*
	XBRC3,75	25409704	26409704*	27409704*	28409704*
	XBRC4	25408004	26408004*	27408004*	28408004*
	XBRC4,25	25409804	26409804*	27409804*	28409804*
	XBRC4,5	25409904	26409904*	27409904*	28409904*
BYPASS	SCR3,5	25405604	26405604*	27405604*	28405604*
	SCR4	25405704	26405704*	27405704*	28405704*
	SCR5	25405804	26405804*	27405804*	28405804*
	RAD	25405004	26405004*	27405004*	
	RBM	25405104	26405104*	27405104*	
	RBL3,5	25406104	26406104*	27406104*	
	RBL4	25406204	26406204*	27406204*	
	RBL4,5	25406304	26406304*	27406304*	
	RBR3	25406404	26406404*	27406404*	
	RBR3,5	25406504	26406504*	27406504*	
	RBR4	25406604	26406604*	27406604*	
	TIG 3	25406804	26406804*	27406804*	
	TIG 3,5	25406904	26406904*	27406904*	
	TIG 4,0	25407004	26407004*	27407004*	
	TIG 4,5	25407104	26407104*	27407104*	
	TIG 5	25407204	26407204*	27407204*	
	RBK	25406704	26406704*	27406704*	
	IM	25401704	26401704*	27401704*	28401704*
	LCB	25403404	26403404*	27403404*	28403404*
	RCB	25405504	26405504*	27405504*	28405504*

* also available with 2 sideholes. To order this shape with sideholes please change the 7th number in the article number from 0 into 2

PendraCare

PRIMUM

Nukreipiantieji kateteriai vainikinėms kraujagyslėms

Daugiasegmentė konstrukcija

Labai minkštas galiukas

Hidrofilinis padengimas išskyrus distalinę (7 cm) ilgio kateterio dalį ir proksimalinę (25 cm) ilgio kateterio dalį

1:1 sukimo kontrolė

Įvairių modifikacijų, su šoninėmis skylutėmis ir be jų

Vidiniai diametrai:

5F – 0,058“

6F – 0,071“

7F – 0,082“

8F – 0,091“

Kateterio ilgis 90 cm ir 100 cm.

Vertimas tikras