



THE INTEGRATED FISHERIES DATA MANAGEMENT PROGRAMME

**Subject: Aggregated Catch Data Report (ACDR) Implementation Document – v 5.4**

1.	INTRODUCTION .....	3
2.	GLOSSARY .....	3
3.	LEGAL BASIS.....	4
4.	REFERENCES .....	5
5.	SCOPE.....	5
6.	PROCEDURES .....	5
6.1.	General principles.....	5
6.1.1.	Data exchange workflow .....	5
6.1.2.	Business Rules .....	6
6.1.3.	Periodicity and submission deadline .....	6
6.1.4.	General aggregation level.....	7
6.1.5.	Message content .....	7
6.1.6.	Submission of empty reports .....	8
6.1.7.	Data elements .....	9
6.2.	Data correction .....	9
6.3.	Reporting of catches still on board .....	10
6.4.	The Catch Status code .....	10
6.5.	The Usage code .....	10
6.5.1.	Catches declared in regulated species reports .....	10
6.5.2.	Catches declared in unregulated species reports .....	12
7.	DATA MODEL (XSD) IMPLEMENTATION .....	13
7.1.	FLUX ACDR Message.....	14
7.2.	FLUX GP Response .....	19
8.	BUSINESS RULES .....	21
8.1.	FLUX ACDR Message.....	23
8.1.1.	LEVEL 00 – Integrity Control .....	23
8.1.2.	LEVEL 01 – Data Field Validation .....	24
8.1.3.	LEVEL 02 – Row Validation .....	27
8.1.4.	LEVEL 03 – Full Content Validation .....	29
8.1.5.	LEVEL 04 – Extended Validation.....	30
8.2.	FLUX GP Response .....	35

8.2.1.	LEVEL 00 – Integrity Control .....	35
8.2.1.	LEVEL 01 – Data Field Validation.....	36
9.	XML EXAMPLES .....	37
10.	CODE LISTS .....	37
11.	TL ENVELOPE PARAMETERS .....	38
12.	CONTACT .....	38
13.	VERSIONING.....	38

## 1. INTRODUCTION

This document describes the implementation within the EU context of the UN/FLUX standard on the exchange of aggregated catch data<sup>1</sup> and effort data.

The data exchange covers the FLUX ACDR Message sent by the flag State to DG MARE and the FLUX Response Message sent back from DG MARE to the flag State.

Messages are exchanged using the Transportation Layer (TL). The TL technical and functional documentation are published on the Master Data Register (MDR) page of the European Commission Fisheries website<sup>2</sup>.

## 2. GLOSSARY

ACDR	Aggregated Catch Data Report – domain name of the FLUX standard
BR	Business rule
BRS	Business Requirements Specification
CCSBT	Commission for the Conservation of Southern Bluefin Tuna
CFR	Community Fleet Register number
CIRCABC	Collaborative platform for document management
DG MARE	Directorate-general for Maritime Affairs and Fisheries
DWH	Data Warehouse
ECR	Effort and Catch Reporting – name of the new application replacing the ACDR system
EEZ	Exclusive Economic Zone
EU	European Union
FAO	Food and Agriculture Organisation of the United Nations
FIDES	Fisheries Data Exchange System
FLUX	Fisheries Language for Universal Exchange
GUID	Global unique identifier
ICCAT	International Commission for the Conservation of Atlantic Tunas
ISO	International Organization for Standardization

---

<sup>1</sup> UN/CEFACT reference – "P1000 – 12; Aggregated Catch Data Report (ACDR) domain.

<sup>2</sup> [http://ec.europa.eu/fisheries/cfp/control/codes/index\\_en.htm](http://ec.europa.eu/fisheries/cfp/control/codes/index_en.htm)

MDM	Master Data Management
MDR	Master Data Register
MS	Member State
SFPA	Sustainable Fisheries Partnership Agreement
SPRFMO	South Pacific Regional Fisheries Management Organisation
TAC	Total Allowable Catch
TL	Transportation layer
UN/CEFACT	United Nations Centre for Trade Facilitation and Electronic Business
UN/FLUX	United Nations Fisheries Language for Universal Exchange
UTC	Coordinated Universal Time
XML	eXtensible Markup Language
XSD	XML Schema Definition

### **3. LEGAL BASIS**

The legal basis for the aggregated catch and fishing effort data reporting is Article 33 of Council Regulation (EC) No 1224/2009 establishing a Community control system for ensuring compliance with the rules of the common fisheries policy, as amended by Regulation (EU) 2015/812.

The detailed implementing rules are specified further in Commission Implementing Regulation (EU) No 404/2011 laying down detailed rules for the implementation of Council Regulation (EC) No 1224/2009, as amended by Regulation (EU) No 2015/1962 of 28 October 2015, and especially Article 146i.

## 4. REFERENCES

The following documents and data structures are directly linked and should be read in connection to this Implementation document:

- FLUX BRS: P1000 – 1; General principles (version 2.1.3).
- FLUX BRS: P1000 – 12; Aggregated Catch Data Report (ACDR) domain (version 2.0.2).
- FLUXACDRMessage\_4p0.xsd – a subset of the UN/CEFACT standard to be used in the EU context;
- FLUXResponseMessage\_4p0.xsd – a subset of the UN/CEFACT standard to be used in the EU context.

The documents and code lists specific to this domain are published on MDR page of the European Commission Fisheries website.

## 5. SCOPE

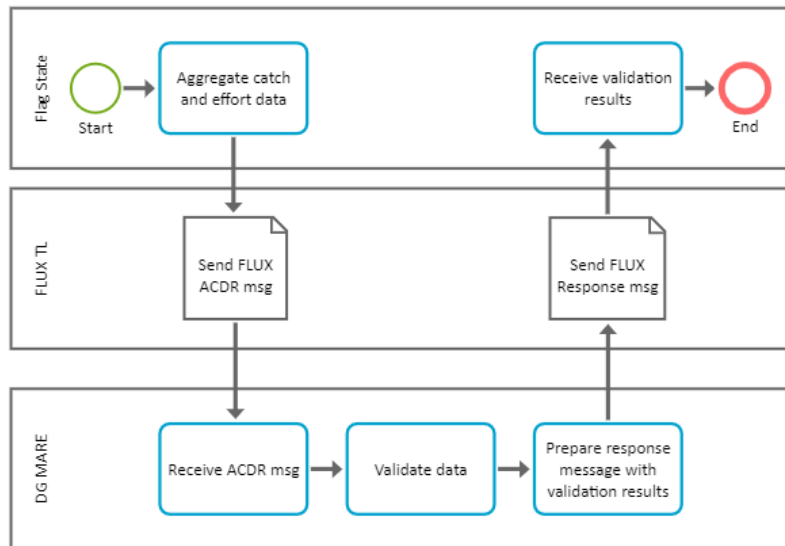
This document covers the exchange of aggregated data between the flag State and DG MARE about fish caught and fishing effort deployed by the flag State's fishing fleet in the Reporting period.

## 6. PROCEDURES

### 6.1. General principles

#### 6.1.1. *Data exchange workflow*

The activity diagram describes the normal procedure defined for submitting FLUX ACDR Messages by a flag State to DG MARE. DG MARE replies with the FLUX General Principles Response explaining the data correctness and results of performed validation.



*ACDR message transmission activity diagram*

### 6.1.2. Business Rules

The process "Validate data" in the diagram above is a validation process on:

- 1) XML Validation level: Based on the definition in the XSD, the parser validates the structure and cardinality as well as compliance for mandatory elements of the XML provided. In this validation process, the system reads the complete document transmitted and generates an error when the content is not compliant with what is defined in the XSD. A result with such error implies the rejection of the entire XML transmitted.
- 2) Business Rules Validation level: a Business Rules Engine validates the content of the XML. Business rules of level 0 are applied first. If no error is found, the other business rules levels are applied sequentially<sup>3</sup>. If at least one error is found by applying the business rules, the entire message is rejected.

A FLUX Response message is returned to the flag State containing the information on the correctness and acceptance or rejection of the FLUX ACDR Message. For content details, please see paragraph 7.2.

### 6.1.3. Periodicity and submission deadline

The Flag State sends at least one FLUX ACDR Message per month of activities. The number of FLUX ACDR correction messages is not limited.

<sup>3</sup> See chapter "Business Rules".

Messages should be sent **before the 15<sup>th</sup> of each month** – for the catches made and fishing effort deployed during the previous month.

*6.1.4. General aggregation level*

The data in the report shall be aggregated per month in which fish was **caught** or fishing effort deployed.

*6.1.5. Message content*

Catch data should be attributed to a specific report type depending on the species and area where fish was caught, (data element 'Type:Code') with the following codes :

6.1.5.1. ACDR-REGIONAL

Data attributed to this type shall contain all catches under the annual EU TAC and Quotas regulations, except for bluefin tuna (BFT), southern bluefin tuna (SBF) and Chilean jack mackerel (CJM) stocks as well as any catches made in Greenland waters<sup>4</sup>.

6.1.5.2. ACDR-FISHING-GEAR

Data must contain BFT catches regulated by the ICCAT convention, except if BFT are caught in the framework of an SFPA.

6.1.5.3. ACDR-VESSEL

Data must contain SBF catches regulated by the CCSBT and CJM catches regulated by SPRFMO.

6.1.5.4. ACDR-FISHING-CAT

Data must include all catches which MS have obtained when fishing in the framework of an SFPA (including Greenland) or under direct authorisations.

6.1.5.5. ACDR-OTHER

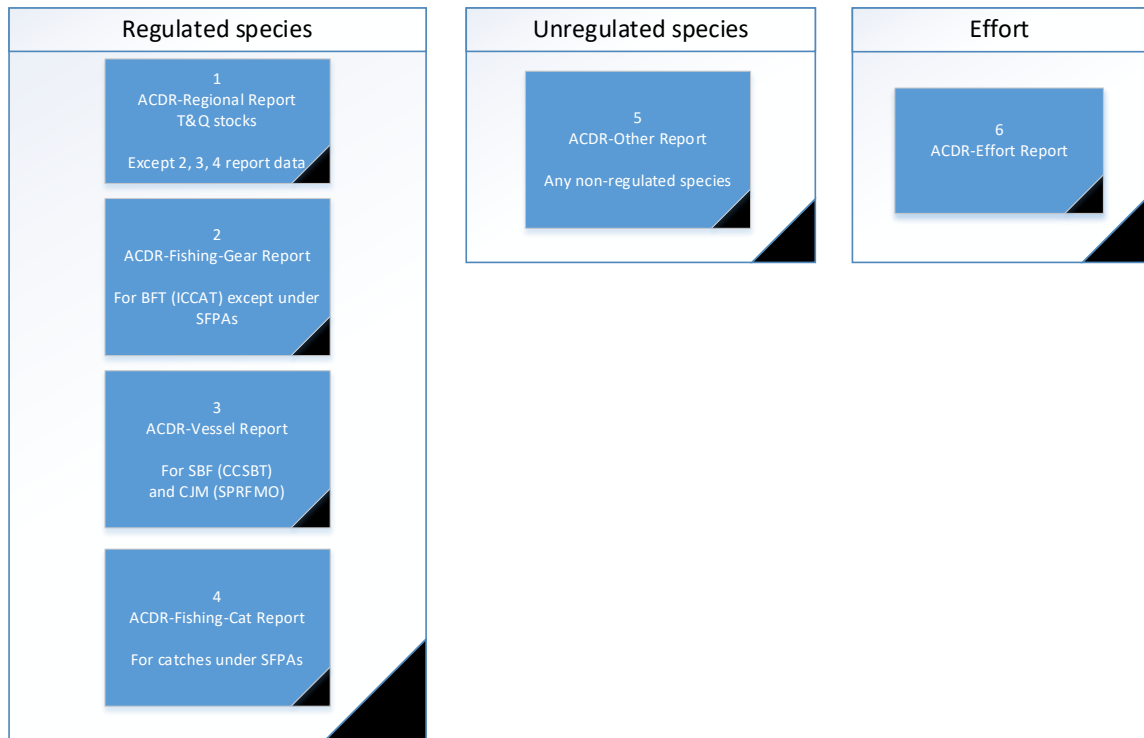
Data must contain all catches obtained by the MS' fishing vessels and which are not communicated under any other Report type for catch data.

6.1.5.6. ACDR-EFFORT

Data must contain fishing effort deployed by the flag State's fishing vessels.

---

<sup>4</sup> Declaration of catches are not allowed for the stocks in Quota (Declaration allowed indicator = 'N')



To sum up, any species to be declared under a TAC stock and defined in the Quota application (except for the R-NEAFC stock group) cannot be reported in the ACDR-OTHER report but only in regulated species reports, even where the catches should not be taken into account for the quota consumption (e.g. scientific catches – see also under 6.5).

#### 6.1.6. *Submission of empty reports*

Any data missing in the FLUX ACDR Message is considered as reported with zero value.

An empty report must be sent in case of non-fishing in the relevant reporting period. A correct empty report does not contain the 'FLUX ACDR Report' entity.



### 6.1.7. Data elements

The following table describes which data elements are mandatory (M) or optional (O) when a particular report type code is used.

Data elements / Report Type Code	ACDR-REGIONAL	ACDR-FISHING-GEAR	ACDR-VESSEL	ACDR-FISHING-CAT	ACDR-OTHER	ACDR-EFFORT
Report Type	M	M	M	M	M	M
Regional Species	M	M	M	O <sup>5</sup>		M
Regional Area	M	M	M	O <sup>5</sup>		M
Fishing Category		M		M		
Vessel Transport Means ID	O	O	M	M	O	
Vessel Transport Means Vessel Country <sup>6</sup>	O	O	M	M	O	
FAO Fishing Gear		M <sup>7</sup>				
FAO Area	M	M	M	M	M	O <sup>8</sup>
Sovereignty waters	M	M	M	M	M	O <sup>8</sup>
Landing Country	O <sup>9</sup>	O <sup>9</sup>	O <sup>9</sup>	O <sup>9</sup>	O <sup>9</sup>	
Catch Status	M	M	M	M	M	O <sup>8</sup>
FAO Species	M	M	M	M	M	O <sup>8</sup>
Unit Quantity	O					M
Weight	M	M	M	M	M	
Usage	M	M	M	M	M	

## 6.2. Data correction

If the Report provider wants to make a correction of an earlier submitted report or make a data update for a certain Reporting period, a correction report should be submitted containing the full data set for that reporting period, not only the corrected values.

The following options are possible for data correction:

- Purpose Code is set '5' (replace) and Referenced Identification value is provided, which is the identification of the previously accepted report for the same period. Reports submitted but not accepted are not considered in this situation.
- Purpose Code is set '9' (original). The report is submitted as the new and there is no need to indicate Referenced Identification value.

---

<sup>5</sup> For migratory species (like in YFT or BET in \*ATLPS (see Quota information))

<sup>6</sup> The flag of the vessel must be provided if a vessel identifier is provided

<sup>7</sup> The FAO gear code must have a corresponding ICCAT gear code in the GEAR\_TYPE list

<sup>8</sup> The element (tag) must be present in the report due to the FLUX standard but the value is not taken into account and can be empty

<sup>9</sup> Mandatory if the Catch Status is LAN (landed)

In both options, the system replaces the previously accepted report for that period with the new set of data. The whole data set for the particular reporting period should be sent, not only the corrected values.

### **6.3. Reporting of catches still on board**

The amendments of the Control implementing rules (Article 146i paragraph 3 of the Commission Implementing Regulation 404/2011) stipulate that “... *When a catch report is to be provided in accordance with Article 13(2) of Council Regulation (EC) No 1006/2008, and before the landing takes place, an estimate catch report shall be provided, with the indication "retained on board". A correction with the exact weight and landing place shall be transmitted before the 15th of the month following the landing.*”

The ECR system allows reporting of fish still on board of the vessel. In such a case the Catch Status code 'ROB' (retained on board) should be used. The report should contain the estimated quantities caught during the reference reporting period (month) and which are still retained on board at the date of reporting.

When that fish is later landed or transhipped, a correction of the catch month's report should be submitted, reflecting the corrected exact weight, Catch Status code 'LAN' (landed) or 'TRA' (transhipped), as well as exact landing country information (Landing Country code) if the fish is landed.

After all landings or transhipments have taken place, there should be no ROB quantities remaining in the ECR database.

### **6.4. The Catch Status code**

The data element catch status code is mandatory for all reports about catches. The possible codes are LAN (landed), ROB (retained on board), TRA (transhipped) and DISC (discarded).

### **6.5. The Usage code**

#### *6.5.1. Catches declared in regulated species reports*

The Usage code 'FISHMEAL' can be used for ACDR-REGIONAL, ACDR-FISHING-GEAR and ACDR-VESSEL reports.

When fish is discarded, the Catch status code is 'DISC' and the Usage code is 'N/A' (not applicable). Discards are not counted under a quota except in some RFMOs like NEAFC. The ECR system will handle those exceptions.

##### **6.5.1.1. When catches must be counted under quotas**

For reporting under landing obligation requirements, Article 33.2.(a) of the Control Regulation (1224/2009), stipulates that for regulated stocks Member States shall submit aggregated

catch quantities “... including those below the applicable minimum conservation reference size, as a separate entry”.

The following conditions should be met:

- The Usage code is mandatory when providing data on regulated stocks with the report types ACDR-REGIONAL, ACDR-FISHING-GEAR and ACDR-VESSEL.
- The codes LAN\_OBL\_SOLD (Fish caught for landing or farming, which is larger than the minimum conservation reference size, or for which there is no minimum conservation reference size defined), LAN\_OBL\_NHUM (Fish caught for landing or farming, which is smaller than the minimum conservation reference size, and for purposes other than direct human consumption).

#### 6.5.1.2. When catches should not be counted under quotas

##### **Scientific catches**

Article 33.6 of the Control Regulation (1224/2009) stipulates that “*catches taken in the framework of scientific research which are marketed and sold shall be counted against the quota applicable to the flag Member State insofar as they exceed 2 % of the quotas concerned*”.

Catches below these 2% should also be declared in the ACDR-REGIONAL report under the corresponding quota but with the Usage code ‘SCIENT\_NUQ’. These catches will not be counted against the quota.

##### **Special cases**

Some specific provisions may prevent regulated species from being counted under quotas. For instance, under IOTC rules, only yellowfin tuna of purse seiners should be counted<sup>10</sup> while it is not the case for longliners. Catches of the latter can be declared with the Usage code ‘SPECIAL\_NUQ’ to avoid taking them into account under the YFT/IOTC quota. Special provisions exist also in article 15 of the CFP regulation<sup>11</sup>.

---

<sup>10</sup> At least in 2021

<sup>11</sup> R. (EU) 1380/2013 on the Common Fisheries Policy

### 6.5.2. *Catches declared in unregulated species reports*

For ACDR-OTHER reports, the only possible code is 'N/A' (not applicable).

Catch report types	Catch Status codes	Usage codes
ACDR-REGIONAL ACDR-FISHING-GEAR ACDR-VESSEL	LAN ROB TRA	LAN_OBL_SOLD LAN_OBL_NHUM SCIENT_NUQ SPECIAL_NUQ
	DISC	N/A
ACDR-FISHING-CAT	LAN ROB TRA DISC	FISHMEAL N/A
ACDR-OTHER	LAN ROB TRA DISC	N/A

*Summary of the Catch Status and Usage codes per report type*

## 7. DATA MODEL (XSD) IMPLEMENTATION

The FLUX ACDR Message data model is used to send catch and fishing effort data from the flag State to DG MARE.

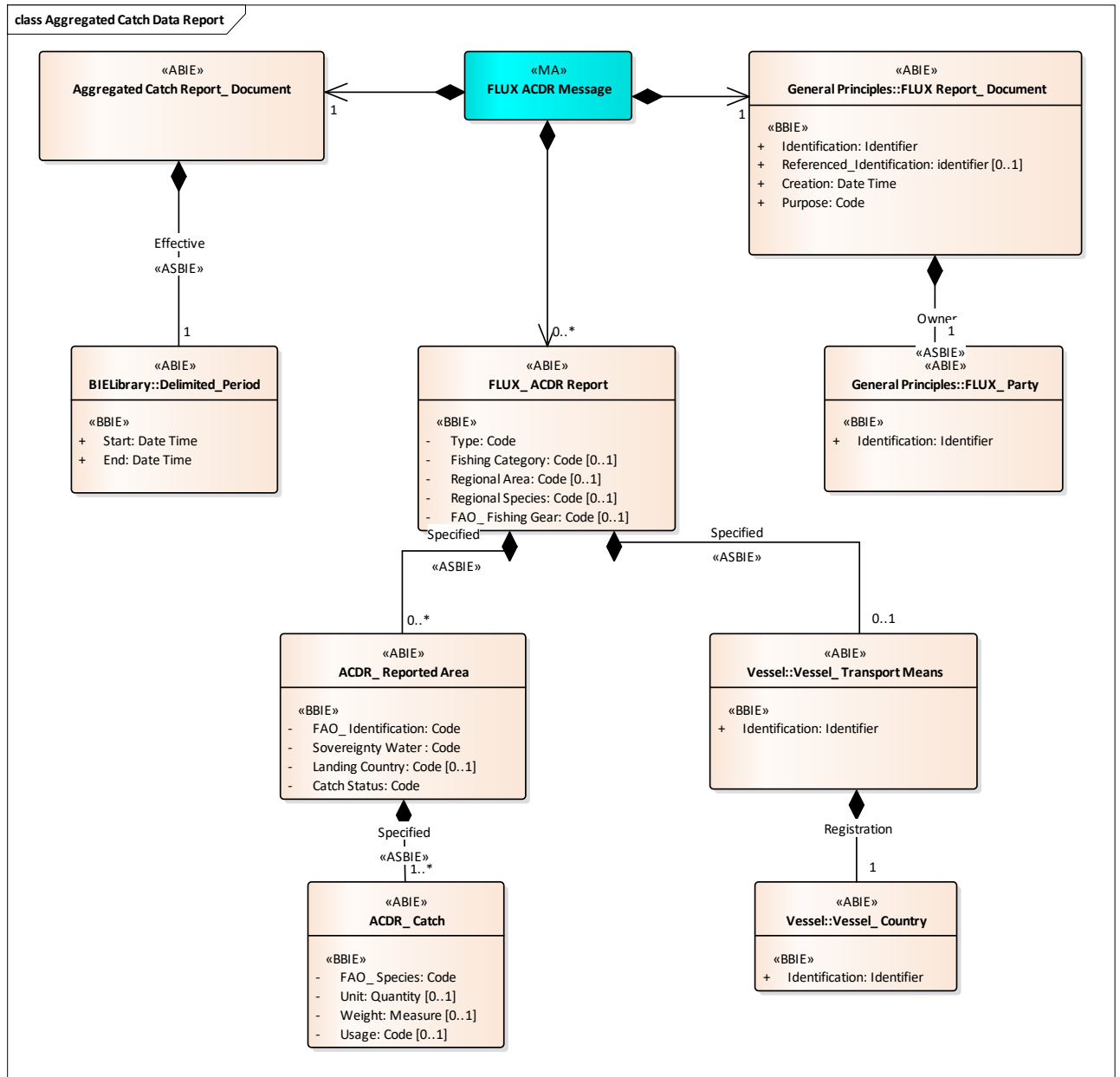
The implementation of the ACDR Data Model (FLUXACDRMessage) should follow the following general constraints at the level of XSD element attributes:

- (1) For Code & Identifier DataType: *listID* or *schemeID* attribute must be provided if it is not specifically defined in the definition of the element;
- (2) For DateTime DataType: only xs:datetime choice is used and 'Z' character defining UTC time zone must be set;
- (3) Measure and Quantity DataType: unitCode attribute should be provided when not correctly explained in the definition.

The following diagram describes the data model used for the transmission of FLUX ACDR Message.

Only the entities and/or attributes listed in the Implementation Document must be considered by the receiving party.

## 7.1. FLUX ACDR Message



**Figure 1: FLUX ACDR Message data model (subset for the EU usage)**

The table below describes the values that can be used for each field defined in the FLUX ACDR Message data model (XSD).

Entity/Field Name	Type	Cardinality		Description	Remarks
		min	max		
FLUX Report_Document		1	1	The document details for this FLUX ACDR message.	Common entity shared by all FLUX domain reports.
Identification	Identifier	1	1	The Global Unique	<i>schemeID</i> = UUID + Value

Entity/Field Name	Type	Cardinality		Description	Remarks
		min	max		
				Identifier of the FLUX ACDR Message	A UUID as defined in the RFC 4122 Cf. <a href="http://www.guidgenerator.com">http://www.guidgenerator.com</a> to generate example of a valid identifier.
Referenced_ Identification	Identifier	0	1	The identifier of a referenced FLUX ACDR message	<i>schemeID</i> = <b>UUID</b> + Value A UUID as defined in the RFC 4122. A UUID for which an update is sent. Compulsory if the report is an update (purpose code = 5)
Creation	DateTime	1	1	The date time UTC value, according to ISO 8601 format, of the creation of this FLUX ACDR Message document.	A UTC date time according to ISO 8601 format; e.g. 2008-10-31T15:07:38Z (milliseconds can be provided optionally).
Purpose	Code	1	1	The code specifying the purpose of this FLUX ACDR Message. Possible values: 9 = Original; 5 = Replace.	Must be either 9 (Original: in case if sending for the first time) or 5 (Replace: in case if this is an update or the correction of the previously accepted report). Code from the MDR list: Attribute <i>listID</i> = <b>FLUX_GP_PURPOSE</b>
Owner FLUX_ Party		1	1	The party owning this FLUX ACDR Message.	
Identification	Identifier	1	1	The identifier of this FLUX ACDR party.	Flag State reporting data. Code from the MDR list: Attribute <i>SchemeID</i> = <b>ECR_RPT_CTRY</b>
Aggregated Catch Report_ Document		1	1	The aggregated catch details for this FLUX ACDR Message.	
Effective Delimited_ Period		1	1	The delimited period within which this aggregated catch report document is effective.	
Start	DateTime	1	1	The date, time, date time or other date time value for the start of this delimited period.	The start date according to ISO 8601 format of the period covered by this report. e.g. 2008-10-01T00:00:00Z Time part is ignored.
End	DateTime	1	1	The date, time, date time or other date time value for the end of this	The end date according to ISO 8601 format of the period covered by this report.

Entity/Field Name	Type	Cardinality		Description	Remarks
		min	max		
				delimited period.	e.g. 2008-10-31T00:00:00Z Time part is ignored.
FLUX_ ACDR Report		0	∞	Information contained in FLUX ACDR report	Can be omitted if reporting empty value (empty report).
Type	Code	1	1	The code specifying the type of this FLUX ACDR Report.	Code from the MDR list: Attribute <i>listID</i> = <b>ECR_ACDR_RPT_TYPE</b>
Regional Area	Code	0	1	The code defined by a regional body and specifying an area of the fish stock or fishing effort group.	Code from the MDR list: Attribute <i>listID</i> = <b>QUOTA_LOCATION</b>
Regional Species	Code	0	1	The code defined by a regional body and specifying species of the stock or fishing effort group.	Code from the MDR list: Attribute <i>listID</i> = <b>QUOTA_OBJECT</b>
Fishing Category	Code	0	1	The code specifying a fishing category, such as the type of vessel, the type of fishing activity or the fishing gear deployed.	Code from the MDR list: Attribute <i>listID</i> = <b>ECR_FISH_CATEGORY</b>
FAO_ Fishing Gear	Code	0	1	The FAO code specifying the fishing gear.  Gear used for fishing, according to FAO International Standard Statistical Classification.	Code from the MDR list: Attribute <i>listID</i> = <b>GEAR_TYPE</b>  For ACDR-FISHING-GEAR reports, the FAO gear code must have a corresponding ICCAT gear code in the list
Specified Vessel_ Transport Means		0	1	The vessel transport means specified in this FLUX ACDR report.	
Identification	Identifier	1	1	An identifier for this transport means vessel, such as an identifier defined by the Food and Agriculture Organisation (FAO), the radio call sign, or an external marking.  CFR number of the EU vessels.	Attribute <i>schemeID</i> = <b>CFR</b>
Registration Vessel_ Country		1	1	The country of registration of vessel.	
Identification	Identifier	1	1	The identifier for the registration country of the vessel.	Flag State of the vessel. Attribute <i>SchemeID</i> =

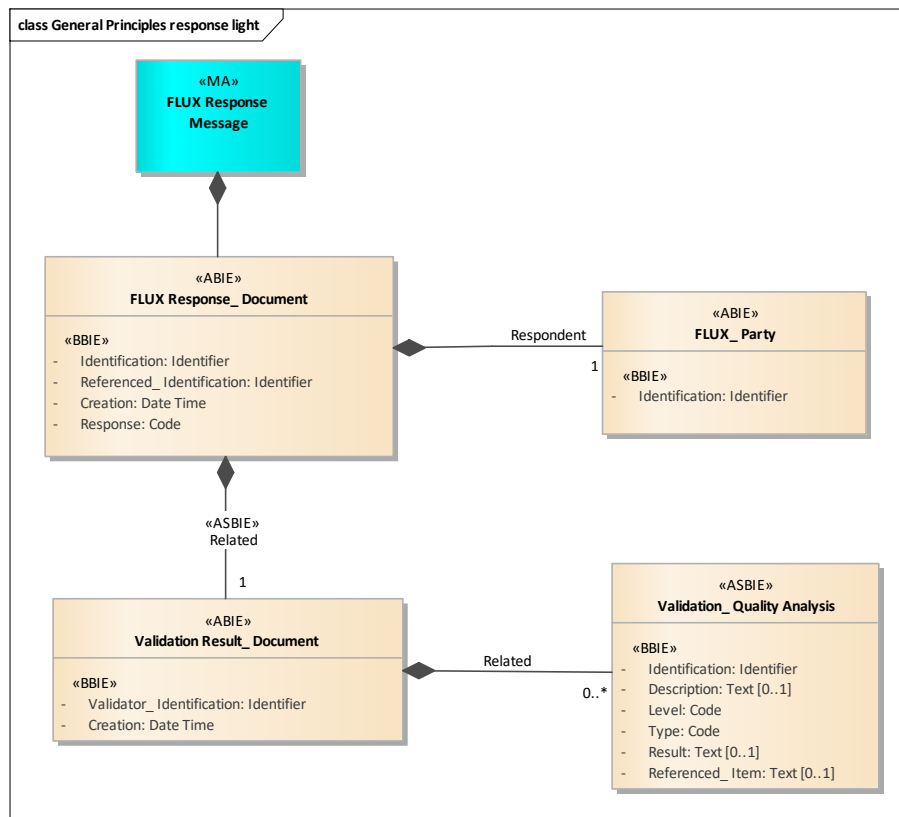


Entity/Field Name	Type	Cardinality		Description	Remarks
		min	max		
					<b>TERRITORY</b>
Specified ACDR_ Reported Area		1	∞	An entity specifying area where the reported catches were taken and landed.	Entity must be repeated per each combination of the values in the data elements of this entity.
FAO_ Identification	Code	1	1	The FAO code Geographical area expressed in FAO code, where reported catches were taken.	Code from the MDR list: Attribute <i>listID</i> = <b>FAO_AREA</b> The most detailed existing FAO area to be provided. Shall be present, but can be left empty when reporting fishing effort (Type.Code=ACDR-EFFORT).
Sovereignty Water	Code	1	1	Sovereignty Waters, where fish has been caught.	Code from the MDR list: Attribute <i>listID</i> = <b>TERRITORY</b> Shall be present, but can be left empty when reporting fishing effort (Type.Code=ACDR-EFFORT).
Landing Country	Code	0	1	The code specifying the country where the reported fish has been landed.	Code from the MDR list: Attribute <i>listID</i> = <b>ECR_LAND_PLACE</b> Mandatory if Catch Status Code = LAN (landed).
Catch Status	Code	1	1	The code specifying the catch status: landed, transhipped, discarded or still retained on board.	Code from the MDR list: Attribute <i>listID</i> = <b>ECR_CATCH_STATUS</b> Shall be present, but can be left empty when reporting fishing effort (Type.Code=ACDR-EFFORT).
Specified ACDR_ Catch		1	∞	A catch specified for this ACDR reported area.	
FAO_ Species	Code	1	1	The FAO species code for this ACDR catch.	Code from the MDR list: Attribute <i>listID</i> = <b>FAO_SPECIES</b> Shall be present, but can be left empty when reporting fishing effort (Type.Code=ACDR-EFFORT).
Unit	Quantity	0	1	The quantity of fish or fishing effort, according to the unit used. Depending on the stock,	Attribute <i>unitCode</i> = code from the <b>FLUX_UNIT</b> list

Entity/Field Name	Type	Cardinality		Description	Remarks
		min	max		
				the unit code differs: <ul style="list-style-type: none"> <li>- 'C62' (individual species) for catch stocks;</li> <li>- 'DAY' (number of fishing days) for relevant effort stocks, or;</li> <li>- 'KWD' (number of kilowatt days) for relevant effort stocks.</li> </ul>	
Weight	Measure	0	1	The measure of the weight of the reported catch.	Attribute <i>unitCode</i> = <b>TNE</b> (tonne) The value must not have more than 3 decimals (0.000). Shall not be present for fishing effort data (Type.Code=ACDR-EFFORT).
Usage	Code	0	1	The code specifying the usage of the reported catch.	Code from the MDR list: Attribute <i>listID</i> = <b>ECR_USAGE_IND</b>

## 7.2. FLUX GP Response

The FLUX General Principles Response message is sent as a reply to the received FLUX ACDR Message. The following diagram describes the FLUX GP Response message data model.



**Figure 2: FLUX General Principles Response data model (subset for the EU usage)**

In response to a report (FLUX ACDR message), exactly one response (FLUX Response message) must be returned. It must be generated automatically and immediately, without human intervention. The recommended maximum delay for responding is 5 minutes.

The following rules apply:

- The response (FLUX Response message) shall contain a reference to the unique identifier of the report (FLUX ACDR message).
- For messages received via the report mechanism (FLUX ACDR message) that pass the well-formedness and (optional) XSD checks, the response will contain an acknowledgement of receipt. This reference shall be the UUID of the original message.
- In cases when the UUID of the original message is not available (eg. not present or XSD failure of that message), erroneous (eg. invalid UUID format) or not correctly used in the original message (eg. wrong or no schemeID), the FLUX Transportation Layer operation number (SchemeID=FLUXTL\_ON) shall be used to reference the original message.

- In case any of the business validation rules fail with an error or warning, the validation results must be included in the response message.
- The party receiving the validation results must take action to correct any issue and retransmit a corrected version of the message, where transmission of the data is required.
- There is no response on a response. When the FLUX response generates an error in the receiving system, e.g. due to an unexpected data format or contents and as a consequence cannot be understood at all by the receiving party, the established fall back procedure must be engaged.
- A Response message cannot be corrected, deleted nor cancelled.

The table below describes the values that can be used for each field defined in the FLUX GP Response data model.

Entity/Field Name	Type	Cardinality		Description	Remarks
		min	max		
FLUX Response_Document		1	1	The business response to a received FLUX ACDR Message.	FLUX General Principles Entity.
Identification	Identifier	1	1	The Global Unique Identifier of the FLUX Response Message.	<i>schemeID</i> = <b>UUID</b> + Value UUID as defined in the RFC 4122.
Referenced_Identification	Identifier	1	1	The identifier of a referenced FLUX ACDR Message, to which this FLUX Response Document is sent.	Used for referencing the report message that has been validated. <i>schemeID</i> = <b>UUID</b> UUID as defined in the RFC 4122.  <i>schemeID</i> = <b>FLUXTL_ON</b> the reference taken from the message envelope in case of a parsing problem with the message resulting on a non-availability of the UUID  <i>schemeID</i> values come from the FLUX_GP_MSG_ID code list
Creation	DateTime	1	1	The date time UTC value of the creation of this FLUX Response Message.	A UTC date time according to ISO 8601 format; e.g. 2008-10-31T15:07:38Z
Response	Code	1	1	The code specifying the general status of the validation process, which has been applied on the referenced FLUX ACDR Message.	Code from the MDR list: <i>listID</i> = <b>FLUX_GP_RESPONSE</b> Possible values: OK = No error found and message is accepted; NOK = Error(s) found and

Entity/Field Name	Type	Cardinality		Description	Remarks
		min	max		
					message rejected; WOK = Error(s) found but message accepted; If at least one Business Rule fails (ERR), the whole FLUX ACDR Message is rejected.
Related Validation Result_ Document		1	1	The validation result document related to this FLUX response.	
Validator_ Identification	Identifier	1	1	The Alpha3 ISO Code of the validating country.	Code from the MDR list: <i>SchemeID</i> = <b>FLUX_GP_PARTY</b> XEU code is used for the European Commission.
Creation	DateTime	1	1	The date time UTC value, according to ISO 8601 format, of the creation of this validation report.	e.g. 2008-10-31T15:07:38Z
Related Validation_ Quality Analysis		0	∞	The validation result document related to this FLUX response.	
Identification	Identifier	1	1	Business rule identification.	Code from the MDR list: <i>schemeID</i> = <b>ECR_BR_DEF</b> e.g.: ACDR-L00-00-0001
Level	Code	1	1	The code specifying the validation level of the business rule.	Code from the MDR list: <i>listID</i> = <b>FLUX_GP_VALIDATION_LEVEL</b> e.g.: L00
Type	Code	1	1	The code specifying the type of error found.	Code from the MDR list: <i>listID</i> = <b>FLUX_GP_VALIDATION_TYPE</b> e.g. : ERR
Result	Text	0	1	Text explaining the business rule violation.	See <i>Message</i> column in Business Rules document.
Referenced_ Item	Text	0	1	A reference to the incorrect data in the FLUX ACDR Message.	
Description	Text	0	1	The textual description of the rule	Description from the ECR_BR_DEF MDR list
Respondent FLUX_ Party		1	1	The party owning this FLUX Report Document.	

Entity/Field Name	Type	Cardinality		Description	Remarks
		min	max		
Identification	Identifier	1	1	The Alpha3 ISO Country Code must be provided.	Code from the MDR list: <i>SchemeID=</i> <b>FLUX_GP_PARTY</b> XEU code is used for European Commission.

## 8. BUSINESS RULES

The list of business rules below is used to verify the data quality of messages. Business rules are executed at the moment of reception of the message. All errors and warnings detected during the validation process are communicated back to the message sender.

FLUX ACDR Messages received must be validated according to the business rules with the following reference dates:

- The FLUX Report\_Document should be validated according to the applicable business rules at the time of the FLUX\_Report\_Document.CreationDateTime,
- the other data in the message should be validated according to the Delimited\_Period.StartDateTime.

FLUX Response Messages received must be validated according to FLUX\_Response\_Document.CreationDateTime.

The codes and code lists valid on the abovementioned reference dates must be used by the validation process to validate the respective parts of the messages.

Business rules of level 0 (see below) are applied first. The other business rule levels are not applied if at least one rule fails in level 0.

Mandatory and conditionally mandatory data elements are checked as well. They depend directly on the report type used (see chapter 6.1.7 for more details). Where a data element is mandatory to be provided, given the conditions, the XML tags in the report shall be present and not be empty. Where data elements are provided while not required according to this document, but nevertheless comply with the UN/CEFACT standard, the XML tags in the message report are ignored by the validation process and are not used for any purpose in the ECR system.

The tables presented in the sections below must be read as follows:

- BR-ID: Business rule ID. Identifier assigned to the BR according to the following methodology: ACDR-Lxx-BB-CC:
  - ACDR: referring to the aggregated catch data reporting domain;

- Lxx: The level of the business rule, where xx is:
  - 00: Integrity control: structure of the message, data types...;
  - 01: Data field validation (one attribute);
  - 02: Row validation (one report);
  - 03: Full Content validation (coherence in the ACDR report);
  - 04: Extended validation (coherence between reports and other systems);
- BB: the sub-level of the business rule;
- CCCC: This part of BR identification represents the sequence number of the business rule in the level and/or sub-level group so it can be uniquely identified;
- Entity: the entity in the ACDR data model;
- Attribute: the attribute(s) name(s) of the entity used by the BR;
- BR: description of the rule;
- E/W: error or warning;
- Error message: text explaining the reason why the BR failed;
- BR usage: Information in which report types the BRE is run.

## 8.1. FLUX ACDR Message

### 8.1.1. LEVEL 00 – Integrity Control

BR-ID	Entity/Attribute	BR description	E/W	Error message	Note
GEN-L00-00-0001	ACDR Message	The message must be an XML document	ERR	An invalid XML message has been received	<i>In the response, schemeID=FLUXTL_ON (reference from the envelope) may be used only in case of a parsing problem with the message or a non availability of or incorrect UUID.</i>
GEN-L00-00-0002	ACDR Message	The message must not be empty	ERR	The content is empty	
GEN-L00-00-0003	ACDR Message	The message must be UTF-8 encoded	ERR	The XML is not UTF-8 compliant	
GEN-L00-00-0004	ACDR Message	The message must be XSD compliant	ERR	The XML is not XSD compliant.	<i>In the response, schemeID=FLUXTL_ON (reference from the envelope) may be used only in case of a parsing problem with the message or a non availability of or incorrect UUID.</i>
GEN-L00-00-0005	ACDR Message	Creation date is mandatory	ERR	The Creation date is not provided	
ACDR-L00-00-0011	FLUX Report Document / Identification	The report identifier must be a valid UUID format	ERR	The report identifier format is not valid.	<i>In the response, schemeID=FLUXTL_ON (reference from the envelope) may be used only in case of a parsing problem with the message or a non availability of or incorrect UUID.</i>
ACDR-L00-00-0012	FLUX Report Document / Identification	The UUID is unique (he does not reference a report already received)	ERR	The report identification is not unique.	<i>In the response, schemeID=FLUXTL_ON (reference from the envelope) may be used only in case of a parsing problem with the message or a non availability of or incorrect UUID.</i>
ACDR-L00-00-0013	FLUX Report Document / Referenced ID	The report identifier must be a valid UUID format	ERR	The referenced report identifier format is not valid.	<i>In the response, schemeID=FLUXTL_ON (reference from the envelope) may be used only in case of a parsing problem with the message or a non availability of or incorrect UUID.</i>
ACDR-L00-00-0014	FLUX Report Document / Referenced ID	Referenced message must exist for reports with Action type='5' (correction)	ERR	The referenced message is missing or does not exist	
ACDR-L00-00-0029	Owner FLUX Party / ID FLUX Report Document / Referenced ID	For reports with Action type='5' (correction), the referenced message must be from the same country and must have the same reporting period	ERR	The referenced message does not have the same reporting period	



BR-ID	Entity/Attribute	BR description	E/W	Error message	Note
ACDR-L00-00-0015	FLUX Report Document / Purpose Code	The listID must be FLUX_GP_PURPOSE	ERR	The referenced list for the purpose code is not valid	
ACDR-L00-00-0017	FLUX Report Document / Creation	Datetime format	ERR	The Report date format is not valid	
ACDR-L00-00-0018	FLUX Report Document / Purpose Code	The purpose code is mandatory	ERR	The purpose code is not provided	
ACDR-L00-00-0019	FLUX Report Document / Purpose Code	Only value '9' and '5' are valid	ERR	The purpose code is not valid. Please verify the corresponding code list	
ACDR-L00-00-0020	Effective Delimited Period / Start Date Time	The Start Date Time must be present	ERR	The Start Date is mandatory	
ACDR-L00-00-0021	Effective Delimited Period / End Date Time	The End Date Time must be present	ERR	The End Date is mandatory	
ACDR-L00-00-0022	Effective Delimited Period / Start Date Time	Datetime format	ERR	The Start date format is not valid	
ACDR-L00-00-0023	Effective Delimited Period / End Date Time	Datetime format	ERR	The End date format is not valid	
ACDR-L00-00-0024	Effective Delimited Period / Start Date Time Effective Delimited Period / End Date Time	Start Date cannot be later than End Date	ERR	Reporting Period Start Date cannot be later than End Date	
ACDR-L00-00-0025	Effective Delimited Period / Start Date Time Effective Delimited Period / End Date Time	Start Date must be in the same month and year as End Date	ERR	The report start date and end date are not in the same month and year	
ACDR-L00-00-0026	Effective Delimited Period / Start Date Time Owner FLUX Party / ID ECR system	Check if the reporting is opened for this country and period	ERR	The reporting period is closed. No submission of reports is authorised	
ACDR-L00-00-0027	Effective Delimited Period / Start Date Time System date time	Check if the reporting period is not in the future (compared to the system date)	ERR	The reporting period cannot be in the future.	
ACDR-L00-00-0028	Effective Delimited Period / Start Date Time	Report Start date must be >= 2017 (parameter)	ERR	Reporting Period Start Date cannot be before 2017	

BR-ID	Entity/Attribute	BR description	E/W	Error message	Note
ACDR-L00-00-0030	Reception date of the ACDR message in ACDR	Check if the file <sup>12</sup> has been sent after the legal deadlines	WAR	The report has been sent after the legal deadline	
ACDR-L00-00-0040	Owner FLUX Party / ID	The schemeID must be ECR_RPT_CTRY	ERR	The referenced list for the FLUX party is wrong	
ACDR-L00-00-0041	Owner FLUX Party / ID	The FLUX Party ID must be provided	ERR	The sender identification in the report is not provided	
ACDR-L00-00-0042	Owner FLUX Party / ID 'FR' in TL envelope	FR (from) data in FLUX TL must be coherent with the FLUX Party Identification	ERR	The sender identification in the report is not the flag state sending the message	The identification of the party sending the message and identified at the level of the FLUX-TL must be the same in the FLUX_Party entity  (no delegation for sending data on behalf of another flag state). Only the part before the first colon is to be considered: Eg. ABC:something => only ABC refers to the party for the purpose of this rule.

### 8.1.2. LEVEL 01 – Data Field Validation

BR-ID	Entity/Attribute	BR description	E/W	Error message
ACDR-L01-00-0010	FLUX ACDR Report / Type Code	The listID must be ECR_ACDR_RPT__TYPE	ERR	The referenced list for the report type is wrong
ACDR-L01-00-0011	FLUX ACDR Report / Type Code	Report Type code is mandatory	ERR	The Report Type Code is not provided
ACDR-L01-00-0012	FLUX ACDR Report / Type Code	Report Type code must be in relevant List	ERR	The Report Type Code is not valid. Please verify the corresponding code list.
ACDR-L01-00-0013	FLUX ACDR Report / Regional Species Code	The listID must be QUOTA_OBJECT	ERR	The referenced list for the Regional Species code is wrong
ACDR-L01-00-0014	FLUX ACDR Report / Regional Species Code	Regional Species code must be in relevant List	ERR	The Regional species code is not valid. Please verify the corresponding code list.
ACDR-L01-00-0015	FLUX ACDR Report / Regional Area Code	The listID must be QUOTA_LOCATION	ERR	The referenced list for the Regional Area code is wrong
ACDR-L01-00-0016	FLUX ACDR Report / Regional Area Code	Regional Area code must be in relevant List	ERR	The regional area code is not valid. Please verify the corresponding code list.
ACDR-L01-00-0017	FLUX ACDR Report / Fishing Category Code	The listID must be ECR_FISH_CATEGORY	ERR	The referenced list for the Fishing Category code is

<sup>12</sup> For the first original file (not a correction) if the reporting period is opened

BR-ID	Entity/Attribute	BR description	E/W	Error message
				wrong
ACDR-L01-00-0018	FLUX ACDR Report / Fishing Category Code	Fishing Category code must be in relevant List	ERR	Fishing Category is not valid. Please verify the corresponding code list.
ACDR-L01-00-0019	FLUX ACDR Report / FAO Fishing Gear Code	The listID must be GEAR_TYPE	ERR	The referenced list for the Gear code is wrong
ACDR-L01-00-0020	FLUX ACDR Report / FAO Fishing Gear Code	Fishing Gear code must be in relevant List	ERR	Fishing Gear is not valid. Please verify the corresponding code list.
ACDR-L01-00-0030	Specified Vessel Transport Means / ID	The code of the schemeID must be CFR	ERR	The code used to identify the type of vessel identifier is wrong
ACDR-L01-00-0035	Registration Vessel Country / ID	The schemeID must be TERRITORY	ERR	The referenced list for the flag of the vessel is wrong
ACDR-L01-00-0036	Registration Vessel Country / ID	The Vessel Country ID must be in relevant List	ERR	Vessel Country is not valid. Please verify the corresponding code list.
ACDR-L01-00-0040	Specified ACDR Reported Area / FAO Identification Code	The listID must be FAO_AREA	ERR	The referenced list for the FAO Area code is wrong
ACDR-L01-00-0041	Specified ACDR Reported Area / FAO Identification Code	FAO Area should be in FAO Major Fishing Areas list	ERR	FAO Area is not valid. Please verify the corresponding code list.
ACDR-L01-00-0042	Specified ACDR Reported Area / FAO Identification Code	FAO area must be given as the most detailed level possible	ERR	The most detailed existing FAO Area must be reported
ACDR-L01-00-0043	Specified ACDR Reported Area / Sovereignty Water Code	The listID must be TERRITORY	ERR	The referenced list for the Sovereignty Water code is wrong
ACDR-L01-00-0044	Specified ACDR Reported Area / Sovereignty Water Code	Sovereignty Waters code must be in relevant List	ERR	The Sovereignty Waters do not correspond to a valid country. Please verify the corresponding code list.
ACDR-L01-00-0046	Specified ACDR Reported Area / Landing Country Code	The listID must be ECR_LAND_PLACE	ERR	The referenced list for the Landing Country code is wrong
ACDR-L01-00-0047	Specified ACDR Reported Area / Landing Country Code	Landing Country code must be in relevant List	ERR	The Landing place is not valid. Please verify the corresponding code list.
ACDR-L01-00-0048	Specified ACDR Reported Area / Landing Country Code	Check if Landing Country code corresponds to a landlocked country	WAR	The Landing place is a landlocked country. Please verify if this is a correct landing place.
ACDR-L01-00-0049	Specified ACDR Reported Area / Catch Status Code	The listID must be ECR_CATCH_STATUS	ERR	The referenced list for the Catch Status code is wrong
ACDR-L01-00-0050	Specified ACDR Reported Area / Catch Status Code	Catch Status code must be in relevant List	ERR	The Catch Status is not valid. Please verify the corresponding code list.
ACDR-L01-00-0060	Specified ACDR Catch /	The listID must be	ERR	The referenced list for the

BR-ID	Entity/Attribute	BR description	E/W	Error message
	FAO Species Code	FAO_SPECIES		FAO Species code is wrong
ACDR-L01-00-0061	Specified ACDR Catch / FAO Species Code	Species code must be in relevant List	ERR	Species code is not valid. Please verify the corresponding code list.
ACDR-L01-00-0063	Specified ACDR Catch / Unit Quantity	The Unit Quantity code must be in the FLUX_UNIT list	ERR	Unit code is not valid. Please verify the corresponding code list.
ACDR-L01-00-0065	Specified ACDR Catch / Unit Quantity	The Unit Quantity must be a positive value	ERR	The Unit Quantity is not a positive value
ACDR-L01-00-0066	Specified ACDR Catch / Unit Quantity	The Unit Quantity value must be with no decimals if C62 is used as Quantity unit code.	ERR	When Unit Code is C62, the quantity value cannot have decimals
ACDR-L01-00-0069	Specified ACDR Catch / Weight Measure	The weight must be a positive value	ERR	No negative value is allowed for the weight
ACDR-L01-00-0070	Specified ACDR Catch / Weight Measure	Unit code for Weight Measure must be in metric tonnes (TNE).	ERR	The unit code for Weight Measure is not correct. Please provide TNE (tonnes).
ACDR-L01-00-0071	Specified ACDR Catch / Weight Measure	The weight must be with no more than 3 decimals.	ERR	The weight cannot have more than three decimals
ACDR-L01-00-0072	Specified ACDR Catch / Usage Code	The listID must be ECR_USAGE_IND	ERR	The referenced list for the Usage code is wrong
ACDR-L01-00-0073	Specified ACDR Catch / Usage Code	Usage code must be in relevant List	ERR	Usage code is not valid. Please verify the corresponding code list.

### 8.1.3. LEVEL 02 – Row Validation

BR-ID	Entity/Attribute	BR description	E/W	Error message
ACDR-L02-00-0001	FLUX ACDR Report / Type Code FLUX ACDR Report / Regional Species Code FLUX ACDR Report / Regional Area Code FLUX ACDR Report / Fishing Category Code Specified Vessel Transport Means / ID Specified Vessel Transport Means / Registration Vessel Country / ID FLUX ACDR Report / FAO Fishing Gear Code Specified ACDR Reported Area / FAO Identification Code Specified ACDR Reported Area / Sovereignty Water Code Specified ACDR Reported Area / Catch Status Code Specified ACDR Catch / FAO Species Code Quantifies Reported Catch / Unit Quantity Specified ACDR Catch / Weight Measure Specified ACDR Catch / Usage Code	Check mandatory data elements for specified report type <sup>13</sup>	ERR	A/some mandatory data is/are missing for the report type. Please refer to the implementation document.
ACDR-L02-00-0002	FLUX ACDR Report / Type Code FLUX_ ACDR Report / Regional Species Code Specified ACDR Reported Area / Sovereignty Water Code	For ACDR-REGIONAL report type BFT, SBF and CJM Regional species codes are not allowed	ERR	This report type cannot be used to report BFT, SBF, CJM regional species
ACDR-L02-00-0003	FLUX ACDR Report / Type Code FLUX_ ACDR Report / Regional Species Code	For ACDR-VESSEL report type only SBF and CJM are allowed as Regional species code	ERR	This report type can only be used to report SBF and CJM regional species
ACDR-L02-00-0004	FLUX ACDR Report / Type Code Specified ACDR Catch / FAO Species Code	For ACDR-OTHER report type BFT is not allowed as FAO species code	ERR	BFT species cannot be reported in report type (ACDR-OTHER).
ACDR-L02-00-0005	FLUX ACDR Report / Type	For ACDR-FISHING_GEAR report only BFT is allowed as	ERR	This report type can only be used for reporting BFT

<sup>13</sup> See data elements table at chapter 6.1.7

BR-ID	Entity/Attribute	BR description	E/W	Error message
	Code FLUX ACDR Report / Regional Species Code	regional species code		regional species
ACDR-L02-00-0012	FLUX ACDR Report / Type Code FLUX ACDR Report / Fishing Category Code	BFT_TARGET, BFT_SPORT and BFT_BYCATCH fishing category codes are rejected if report type is not ACDR- FISHING-GEAR	ERR	Fishing Category code is not valid for this Report type
ACDR-L02-00-0013	FLUX ACDR Report / Type Code FLUX ACDR Report / Fishing Category Code	BFT_TARGET, BFT_SPORT and BFT_BYCATCH fishing category codes are the only ones accepted for report type ACDR-FISHING-GEAR	ERR	Fishing Category is not valid for this Report Type
ACDR-L02-00-0014	FLUX ACDR Report / Type Code Specified ACDR Catch / FAO Species Code Specified ACDR Reported Area / FAO Identification Code Specified ACDR Reported Area / Sovereignty Water Code Specified ACDR Reported Area / Catch Status Code	FAO Species, FAO Area, Sovereign Waters, Catch Status data element shall be in the ACDR-EFFORT report but content is ignored	WAR	FAO Species, FAO Area, Sovereign Waters and Catch Status data in the effort report are ignored
ACDR-L02-00-0015	FLUX ACDR Report / Type Code FLUX ACDR Report / FAO Fishing Gear Code	For ACDR-FISHING_GEAR reports, only FAO fishing gears with a corresponding ICCAT gear type are accepted	ERR	Fishing Gear provided is not valid for ICCAT
ACDR-L02-00-0020	Specified ACDR Reported Area / Sovereignty Water Code Specified ACDR Reported Area / FAO Identification	The Sovereignty Waters should be coherent with the FAO area	ERR	The Sovereignty Waters is not consistent with the FAO area
ACDR-L02-00-0021	Specified ACDR Reported Area / Sovereignty Water Code Specified ACDR Reported Area / FAO Identification	Sovereignty waters code 'N/A' (Not Applicable) is only valid in the Mediterranean sea (Subarea 37.1, 37.2 or 37.3)	ERR	The Sovereignty waters code ""N/A"" is only valid for the Mediterranean sea
ACDR-L02-00-0022	Specified ACDR Reported Area / Landing Country Code Specified ACDR Reported Area / Catch Status Code	The Landing Country code shall be provided for the Catch Status LAN	ERR	The Landing place is mandatory for landed catches
ACDR-L02-00-0030	FLUX ACDR Report / Type Code Quantifies Reported Catch / Quantity (unit Code)	Unit code C62 (individual unit) for Quantity cannot be used, except in ACDR- REGIONAL reports.	ERR	The unit code for Quantity is wrong.
ACDR-L02-00-0031	FLUX ACDR Report / Type Code Quantifies Reported Catch /	Unit code DAY or KWD for Unit Quantity cannot be used, except in ACDR-	ERR	The unit code for Quantity is wrong.

BR-ID	Entity/Attribute	BR description	E/W	Error message
	Quantity (unit Code)	EFFORT reports.		
ACDR-L02-00-0032	FLUX ACDR Report / Type Code Quantifies Reported Catch / Quantity (unit Code)	In ACDR-EFFORT reports only unit code DAY or KWD for Unit Quantity .	ERR	The unit code for Quantity is wrong.
ACDR-L02-00-0040	FLUX ACDR Report / Type Code Specified ACDR Catch / Usage Code	LAN_OBL_SOLD, LAN_OBL_NHUM, SCIENT_NUQ, SPECIAL_NUQ and N/A codes are the only valid Usage codes for ACDR-REGIONAL, ACDR-FISHING-GEAR and ACDR-VESSEL reports	ERR	The Usage code is wrong for this type of report.
ACDR-L02-00-0041	FLUX ACDR Report / Type Code Specified ACDR Catch / Usage Code	In ACDR-FISHING_CAT, only the Usage code N/A and FISHMEAL is allowed.	ERR	The Usage code is wrong for this type of report.
ACDR-L02-00-0042	FLUX ACDR Report / Type Code Specified ACDR Catch / Usage Code	In ACDR-OTHER, , only the Usage code N/A is allowed.	ERR	The Usage code is not valid for non-regulated species reports.
ACDR-L02-00-0043	FLUX ACDR Report / Type Code Specified ACDR Reported Area / Catch Status Code Specified ACDR Catch / Usage Code	In ACDR-REGIONAL, ACDR-FISHING-GEAR and ACDR-VESSEL report types, only the Usage code N/A is allowed if the Catch Status code is DISC.	ERR	The Usage code is not valid for discards.
ACDR-L02-00-0050	Specified ACDR Reported Area / Sovereignty Water Code Specified ACDR Catch / Usage Code	Only N/A and FISHMEAL codes are allowed as Usage codes, if Sovereignty Waters equals MAR, ESH or MRT.	ERR	The Usage code is wrong. Please use N/A or FISHMEAL
ACDR-L02-00-0061	Specified Vessel Transport Means / Registration Vessel Country / ID Owner FLUX Party / ID	The flag of the vessel must be the same as the reporting country	ERR	The flag of the vessel is not the same as the reporting country

#### 8.1.4. LEVEL 03 – Full Content Validation

BR-ID	Entity/Attribute	BR description	E/W	Error message
ACDR-L03-00-0001	Full report content	No duplicated declarations are allowed in the report.	ERR	Duplicates have been detected in the declarations

### 8.1.5. LEVEL 04 – Extended Validation

BR-ID	Entity/Attribute	BR description	E/W	Error message
ACDR-L04-00-0001	Effective Delimited Period / Start Date Time  FLUX ACDR Report / Regional Species Code  FLUX ACDR Report / Regional Area Code  QUOTA system	The Regional Species and Regional Area codes must be a valid stock for the reporting year under T-%, C-% and E-% stock group.	ERR	For the reporting year, the reported stock is not a valid stock for the ECR system
ACDR-L04-00-0002	FLUX ACDR Report / Regional Species Code  FLUX ACDR Report / Regional Area Code  Specified ACDR Reported Area / Sovereignty Water Code  Specified ACDR Reported Area / FAO Identification  Effective Delimited Period / Start Date Time  QUOTA system (FAO-EEZ-TAC areas)	Regional Species and Area, Sovereignty Waters, FAO Area data must be coherent amongst each other for the reporting year.	ERR	Regional Area/Species do not correspond to FAO Area and/or Sovereignty Waters for the reporting year
ACDR-L04-00-0016	FLUX ACDR Report / Fishing Category Code  Specified ACDR Reported Area / Sovereignty Water Code  QUOTA system (FAO-EEZ-TAC areas)	Fishing Category and Sovereignty Waters data must be coherent. Not applicable if fishing categories are BFT_TARGET, BFT_SPORT and BFT_BYCATCH	ERR	Fishing Category is not valid for the reported Sovereignty Waters.
ACDR-L04-00-0003	FLUX ACDR Report / Type Code  Specified ACDR Catch / FAO Species Code  Specified ACDR Reported Area / FAO Identification Code  Specified ACDR Reported Area / Sovereignty Water Code  FLUX ACDR Report / Fishing Category Code  QUOTA system (FAO-EEZ-TAC areas)	In ACDR-OTHER reports, to verify that declared catches are not regulated (they must be declared in regulated species reports) <sup>14</sup>	ERR	The FAO species cannot be declared under the ACDR-OTHER report because it is a regulated species
ACDR-L04-00-0004	FLUX ACDR Report / Type Code  Effective Delimited Period / Start Date Time	Stocks defined as effort groups in QUOTA for the reporting year are not allowed in ACDR-REGIONAL, ACDR-	ERR	For the reporting year, the reported stock is not allowed for this Report Type

<sup>14</sup> The FAO area, Sovereignty Waters and Regulated species codes declared in the ACDR-OTHER report should not be an area covered by a stock for which the Regulated species is the stock species or in the list of biological species of the stock.



BR-ID	Entity/Attribute	BR description	E/W	Error message
	FLUX ACDR Report / Regional Species Code FLUX ACDR Report / Regional Area Code QUOTA system	OTHER, ACDR-FISHING- GEAR, ACDR-VESSEL or ACDR-FISHING-CAT report types		
ACDR-L04-00-0005	FLUX ACDR Report / Type Code Effective Delimited Period / Start Date Time FLUX ACDR Report / Regional Species Code FLUX ACDR Report / Regional Area Code QUOTA system	Only stocks defined as effort groups in QUOTA for the reporting year are allowed in ACDR-EFFORT report type	ERR	For the reporting year, the reported stock is not allowed for this Report Type
ACDR-L04-00-0006	FLUX ACDR Report / Type Code Effective Delimited Period / Start Date Time FLUX ACDR Report / Regional Species Code FLUX ACDR Report / Regional Area Code QUOTA system	Declaration of catches must be allowed for the stock (Declaration allowed indicator = 'Y') in the reporting year.	ERR	Catches cannot be reported under that stock in the reporting year
ACDR-L04-00-0007	Effective Delimited Period / Start Date Time FLUX ACDR Report / Regional Species Code FLUX ACDR Report / Regional Area Code Owner FLUX Party / ID QUOTA system	The reporting country must have fishing opportunities (quota) for the stock in the reporting year	WAR	Reporting country does not have fishing opportunities for the reported stock in the reporting year
ACDR-L04-00-0008	Effective Delimited Period / Start Date Time FLUX ACDR Report / Regional Species Code FLUX ACDR Report / Regional Area Code Owner FLUX Party / ID QUOTA system	Check if a fishing stop has been issued before or during the reporting period for the quota of the reporting country in the stock	WAR	Catches or efforts have been declared for a quota/allocation with a fishing stop
ACDR-L04-00-0009	Owner FLUX Party / ID Effective Delimited Period / Start Date Time FLUX ACDR Report / Regional Species Code FLUX ACDR Report / Regional Area Code Specified ACDR Catch / FAO Species Code QUOTA system	For a stock based on catches, if it is a multispecies stock, species must be in the list of biological species that can be fished by the country. If it is not a multispecies stock, the FAO species must be identical to the Regional Species.	ERR	The FAO species should be in the list of species that can be fished under this stock or identical to the Regional Species if it is not a multispecies stock

BR-ID	Entity/Attribute	BR description	E/W	Error message
ACDR-L04-00-0010	Effective Delimited Period / Start Date Time  Effective Delimited Period / End Date Time  FLUX ACDR Report / Regional Species Code  FLUX ACDR Report / Regional Area Code  QUOTA system	The reporting period shall be in the season (or one of the seasons) of the stock	WAR	The reporting period falls outside of the stock season(s)
ACDR-L04-00-0011	Effective Delimited Period / Start Date Time  Effective Delimited Period / End Date Time  FLUX ACDR Report / Regional Species Code  FLUX ACDR Report / Regional Area Code  QUOTA system	According to the season of the stock including the reporting period, catches are reported to a quota of the previous reporting year	WAR	Based on the reporting period and the season of the stock, catches are reported to a quota of the previous year
ACDR-L04-00-0012	Effective Delimited Period / Start Date Time  FLUX ACDR Report / Regional Species Code  FLUX ACDR Report / Regional Area Code  Specified ACDR Catch / Weight Measure (unit Code)  QUOTA system	In the reporting year, if the stock unit for the stock is 'T' (tonnes), then Weight Measure must be present in the report. Unit code shall be 'TNE'.	ERR	The declared unit does not correspond to the unit defined in Quota for the stock in the reporting year.
ACDR-L04-00-0013	Effective Delimited Period / Start Date Time  FLUX ACDR Report / Regional Species Code  FLUX ACDR Report / Regional Area Code  Specified ACDR Catch / Unit Quantity  QUOTA system	In the reporting year, if the stock unit for the stock is 'U' (number of fish), then Unit Quantity must be present in the report. Unit code shall be 'C62'.	ERR	A correct Unit Code must be provided.
ACDR-L04-00-0014	Effective Delimited Period / Start Date Time  FLUX ACDR Report / Regional Species Code  FLUX ACDR Report / Regional Area Code  Specified ACDR Catch / Unit Quantity  QUOTA system	In the reporting year, if the stock unit for the stock is 'D' (days), then Unit Quantity must be present in the report. UnitCode shall be DAY	ERR	A correct Unit Code must be provided.
ACDR-L04-00-0015	Effective Delimited Period / Start Date Time  FLUX ACDR Report / Regional Species Code  FLUX ACDR Report /	In the reporting year, if the stock unit for the stock is 'KWD' (kilowatt days), then Unit Quantity must be present in the report. UnitCode shall be KWD.	ERR	A correct Unit Code must be provided.

BR-ID	Entity/Attribute	BR description	E/W	Error message
	Regional Area Code Quantifies Reported Catch / Quantity (unit Code) QUOTA system			
ACDR-L04-00-0020	Effective Delimited Period / Start Date Time Specified Vessel Transport Means / ID (schemeID=CFR) Specified Vessel Transport Means / Registration Vessel Country / ID FLEET system	For EU fishing vessel, the vessel shall be active <sup>15</sup> and belong to the flag state in the reporting period.	ERR	In the EU fleet register, the CFR does not correspond to an active vessel of the Flag State for the reporting period
ACDR-L04-00-0021	Effective Delimited Period / Start Date Time FLUX ACDR Report / Fishing Category Code LICENCE system	Fishing Category should exist in the LICENCE system for the reporting period. Not applicable if fishing categories in BFT_TARGET, BFT_SPORT and BFT_BYCATCH	WAR	Fishing Category is not in LICENCE for the Reporting Period
ACDR-L04-00-0023	Effective Delimited Period / Start Date Time Specified Vessel Transport Means / ID (CFR) Specified Vessel Transport Means / Registration Vessel Country / ID FLUX ACDR Report / Fishing Category Code LICENCE system	Vessel Identification must be checked against the list of licensed vessels in the relevant Fishing Category for the reporting period if it exists in LICENCE. Not applicable if fishing categories in BFT_TARGET, BFT_SPORT and BFT_BYCATCH	WAR	The vessel is not licenced in the Fishing Category for the reporting period
ACDR-L04-00-0030	ECR system	If ECR detects a correction report, check if the new quantity (weight) declared for the same Report Type/ Regional Species / Regional Area / Fishing Category / Fishing Gear / FAO area / Landing Country / Sovereignty Waters / Vessel ID / FAO Species / Usage differs more than 10% (parameter) from the previous accepted value.	WAR	Important corrections (more than 10%) in reported quantities has been detected
ACDR-L04-00-0031	ECR system	If ECR detects a correction report, check if a quantity (weight) declared for the same Report Type/ Regional Species / Regional Area / Fishing Category / Fishing Gear / FAO area / Landing Country / Sovereignty Waters / Vessel ID / FAO Species / Usage in the previous accepted report still	WAR	Quantities reported for specific catches in the previous accepted report do not exist anymore in the correction report. Please see ECR for more details.

<sup>15</sup> In the FLEET system, at least on vessel event which is not an exit from the fleet must be found in the reporting period

BR-ID	Entity/Attribute	BR description	E/W	Error message
		exist (even with a different quantity) in the correction report		
ACDR-L04-00-0032	ECR system	A report type is missing compared to the previous accepted report of the same period	WAR	A report type is missing from the message compared with the previous accepted message of the same period
ACDR-L04-00-0033	ECR system	A new report type has been received, compared to the previous accepted report of the same period	WAR	A new report type has been received, compared with the previous accepted message of the same period

## 8.2. FLUX GP Response

### 8.2.1. LEVEL 00 – Integrity Control

BR-ID	Entity/Attribute	BR description	E/W	Error message
GEN-L00-01-0001	ACDR Response Message ACDR XSD	Verifies whether or not the message is valid XML and validates against the XSD schema	ERR	An invalid XML message has been received
ACDR-L00-01-0010	FLUX Response Document / Identification	The report identifier is mandatory	ERR	The report identification is not provided
ACDR-L00-01-0011	FLUX Response Document / Identification	The report identifier must be a valid UUID format	ERR	The report identifier has not a valid format
ACDR-L00-01-0012	FLUX Response Document / Identification	The UUID is unique (he does not reference a report already received)	ERR	The report identification is not unique
ACDR-L00-01-0013	FLUX Response Document / Referenced ID	The Referenced ID must be a valid UUID format	ERR	The referenced report identifier has not a valid format
ACDR-L00-01-0014	FLUX Response Document / Referenced ID	The Referenced ID is mandatory	ERR	The referenced report identifier is not provided
ACDR-L00-01-0015	FLUX Response Document / Creation	Creation date is mandatory	ERR	The Creation date is not provided
ACDR-L00-01-0016	FLUX Response Document / Creation	Datetime format	ERR	The Response date has not a valid format
ACDR-L00-01-0017	FLUX Response Document / Creation System date time	Check if the creation date is not in the future (compared to the system date)	ERR	The creation date cannot be in the future.
ACDR-L00-01-0018	FLUX Response Document / Response Code	Response Code is mandatory	ERR	The Response code is not provided
ACDR-L00-01-0030	Validation Result Document / Creation	Creation date is mandatory	ERR	The Creation date is not provided
ACDR-L00-01-0031	Validation Result Document / Creation	Datetime format	ERR	The Creation date has not a valid format
ACDR-L00-01-0032	Validation Result Document / Creation System date time	Check if the Creation date is not in the future (compared to the system date)	ERR	The Creation date cannot be in the future.
ACDR-L00-01-0040	Respondent FLUX Party / ID	The schemeID must be FLUX_GP_PARTY	ERR	The referenced list for the FLUX party is wrong
ACDR-L00-01-0041	Respondent FLUX Party / ID	The FLUX Party ID must be provided	ERR	The sender identification in the report is not provided
ACDR-L00-01-0042	Respondent FLUX Party / ID 'FR' in TL envelope	FR (from) data in FLUX TL must be coherent with the FLUX Party Identification	ERR	The sender identification in the report is not the same as the one sending the message

### 8.2.1. LEVEL 01 – Data Field Validation

BR-ID	Entity/Attribute	BR description	E/W	Error message
ACDR-L01-01-0001	Respondent FLUX Party / ID	The FLUX Party ID must be in relevant List	ERR	The FLUX Party ID is not valid. Please verify the corresponding code list.
ACDR-L01-01-0010	FLUX Response Document / Response Code	The listID must be FLUX_GP_RESPONSE	ERR	The referenced list for the Response code is wrong
ACDR-L01-01-0011	FLUX Response Document / Response Code	Response code is mandatory	ERR	The Response Code is not provided
ACDR-L01-01-0012	FLUX Response Document / Response Code	Response code must be in relevant List	ERR	The Response Code is not valid. Please verify the corresponding code list.
ACDR-L01-01-0020	Related validation Result Document / ID	The listID must be FLUX_GP_PARTY	ERR	The referenced list for the validation party is wrong
ACDR-L01-01-0021	Related validation Result Document / ID	Related validation Result Document ID must be in relevant List	ERR	The Related validation Result Document ID. Please verify the corresponding code list.
ACDR-L01-01-0030	Validation Quality Analysis / Identification	The listID must be ECR_BR_DEF	ERR	The referenced list for the reference of the business rule is wrong
ACDR-L01-01-0031	Validation Quality Analysis / Identification	Quality Analysis ID is mandatory	ERR	Quality Analysis identifier is not provided
ACDR-L01-01-0032	Validation Quality Analysis / Identification	Quality Analysis ID must be in relevant List	ERR	Quality Analysis identifier is not valid. Please verify the corresponding code list.
ACDR-L01-01-0033	Validation Quality Analysis / Level code	The listID must be FLUX_GP_VALIDATION_LEVEL	ERR	The referenced list for the Level code is wrong
ACDR-L01-01-0034	Validation Quality Analysis / Level code	Level code is mandatory	ERR	Level code is not provided
ACDR-L01-01-0035	Validation Quality Analysis / Level code	Level code must be in relevant List	ERR	Level code is not valid. Please verify the corresponding code list.
ACDR-L01-01-0036	Validation Quality Analysis / Type code	The listID must be FLUX_GP_VALIDATION_TYPE	ERR	The referenced list for the type of error (severity code) is wrong
ACDR-L01-01-0037	Validation Quality Analysis / Type code	Type code is mandatory	ERR	Type code is not provided
ACDR-L01-01-0038	Validation Quality Analysis / Type code	Type code must be in relevant List	ERR	Type code is not valid. Please verify the corresponding code list.

## 9. XML EXAMPLES

The following examples are available on CIRCABC (MARE / IFDM DEL / Library / Business Layer / ACDR V2 (XSD v4.0, in production since 1\_1\_2017), included in the document package:

- FLUX ACDR Messages:
  - An initial message;
  - An empty message;
- FLUX General Principles Response messages:
  - An accepted message;
  - An accepted message with warnings;
  - A rejected message.

## 10. CODE LISTS

- ECR\_BR\_DEF
- ECR\_CATCH\_STATUS
- ECR\_FISH\_CATEGORY
- ECR\_USAGE\_IND
- ECR\_ACDR\_RPT\_TYPE
- ECR\_LAND\_PLACE
- ECR\_RPT\_CTRY
- FAO\_AREA
- FAO\_SPECIES
- FLUX\_GP\_PARTY
- FLUX\_GP\_PURPOSE
- FLUX\_GP\_RESPONSE
- FLUX\_GP\_VALIDATION\_LEVEL
- FLUX\_GP\_VALIDATION\_TYPE
- FLUX\_UNIT

- GEAR\_TYPE:
- QUOTA\_LOCATION
- QUOTA\_OBJECT
- TERRITORY

## 11. TL ENVELOPE PARAMETERS

The following TL parameters must be used for transmission of FLUX ACDR Message and the related FLUX GP Response messages described in this document.

Common name	FLUX TL Envelope Tag name	Value	Remark
Dataflow name	DF	urn:un:unece:uncefact:fisheries:FLUX:ACDR:EU:5	According to format: urn:un:unece:uncefact:fisheries:FLUX:[domain]:[context]:[version]
Timeout DateTime	TODT	Current DateTime (in UTC) + 1 hour	Value expressed as XSD DateTime in UTC
Acknowledge of Receipt	AR	False	The AR="false" parameter disables asynchronous acknowledge-of-receipt (STAT AoR) messages in case of a successful ACDR transmission. It must be understood that, even with AR=false, no ACDR business message will get lost by the FLUX TL network. Permanent transmission failures are always reported, irrespective of the AR value.  Envelopes TL should give up retrying failed transmissions only after 1 full day (1440 minutes). This is the business fall-back procedure timeout.

## 12. CONTACT

[MARE-DATA-MANAGEMENT@ec.europa.eu](mailto:MARE-DATA-MANAGEMENT@ec.europa.eu)

## 13. VERSIONING

Version	Author	Date
0.1	EH	05/05/2014
Notes	First draft	
0.2	TR	08/05/2014
Notes	Update of Code List Reference	
0.3	EH+MB	05/09/2014
Notes	Global update and comments	
0.4	MB	05/09/2014
Notes	Comments & editorial changes	



0.5	EH	09/09/2014
Notes	MB comments & datatype;definition changes	
0.6	MB	23/06/2015
Notes	Alignment with the FLUX ACDR Message XSD v3.0 and GP IG v0.8 document	
0.7	MB, BK	13/10/2015
Notes	Business situation added, editorial changes, alignment with other domain's IG	
0.8	BK	14/10/2015
	Final comments, business cases clarifications	
0.99	MB	17/11/2015
	Reference to the most recent UN/CEFACT standard – ACDR XSD 4.0, harmonisation between other domains, code list references, legal references	
1.0	MB	16/03/2017
	Improved text, correction of errors, data model pictures updated, final text after MS agreement	
1.1	MB	06/06/2017
	FLUX TL parameters added, chapter 8 reordered alphabetically, various text errors fixed	
2.0	MB	07/11/2019
	Introduce fishing effort reporting, add list of business rules, update document to the reporting practice in place	
2.1	MB	12/10/2021
	Kilowatt days (KWD) added as the possible unit to be reported for fishing effort data. Business rules identifiers and DataFlow name changed to follow the FLUX principles	
5.0	TR Revision of the entire document presented to ERS & DM Group on June 2022	17/05/2022
5.1	TR: - ) Some footnotes added - ) 6.1.7: footnote numbers corrected  - ) FAO fishing gear: comment added that the FAO gear code in the report must have a correspondent ICCAT code in the FAO gear list - ) For the sovereignty waters data, the ECR_SOV_WATERS Code list is replaced by the TERRITORY list - ) For the landing country data, the TERRITORY list is replaced by the ECR_LAND_PLACE list  - ) 6.5: for usage code: FISHMEAL code has suppressed but added only for ACDR-FISHING-CAT reports  - ) Business rules: + ) Chap 8: the text about which reference dates to use for validating the messages has been reviewed + ) BR reference ACDR-L00-00-0001 replaced by GEN-L00-00-0001 + ) BR reference ACDR-L00-01-0001 replaced by GEN-L00-01-	23/08/2022

	0001 +) BR ACDR-L01-00-0042 and ACDR-L01-00-0046 modified due to the change of code lists (see above) +) BR ACDR-L02-00-0011 moved to level 4 and changed to BR ACDR-L04-00-0016 +) BR L02-00-0032 about unit quantity added +) BR L02-00-0040: FISHMEAL and DISC codes suppressed +) BR L02-00-0050: LAN_OBL_SOLD code replaced by N/A +) BR L02-00-0010 about weight and quantity in ACDR REGIONAL report suppressed	
5.2	Entity Description: -) FLUX Report Document/Identifier : SchemeID (UUID) added -) FLUX Report Document/Referenced Identifier : SchemeID (UUID) added -) FLUX Response Document/Identifier : SchemeID (UUID) added -) FLUX Response Document/Referenced Identifier : SchemeID (UUID) added  BR: New: -) GEN rules have been added: those BRs will be common to all FLUX systems in the Ocean Store -) ACDR-L00-00-0029: new BR  Removed: -) ACDR-L00-00-0010 is removed because it is part of the XML validation. -) ACDR-L00-00-0016 is replaced by the GEN-L00-00-0005 because the BR will be common to FLUX domains -) ACDR-L01-00-0001 is covered by L00-00_0042  Updated: -) ACDR-L01-00-0010: the listID has been modified into ECR_ACDR_RPT_TYPE -) ACDR-L02-00-0041: FISHMEAL allowed in ACDR-FISGHING-CAT reports -) ACDR-L04-00-0016, ACDR-L04-00-0021, ACDR-L04-00-0023: exclusion of some categories	
5.3	-) Entity description: Flux Response Referenced Identification: Remark updated  -) FLUX GP Response (ch. 7.2): more information given about the FLUX GP Response message  -) Business rules: +) GEN-L00-00-0001, GEN-L00-00-0002, GEN-L00-00-0004, ACDR-L00-00-0011, ACDR-L00-00-0012, ACDR-L00-00-0013: important note added for the implementation of the rules +) L00-00-0042: note added +) L01-00-0045, L04-00-0021: severity changed from ERR to WAR +) L04-00-0012: description adapted to verify unit of weight for stocks expressed in tonnes only +) L04-00-0013: description adapted to be similar with the previous one. +) L04-00-0022: removed +) L04-00-0023: description adapted and severity code changed to WAR	
5.4	-) L01-00-0045 about XEU code in SW: rule suppressed	

